

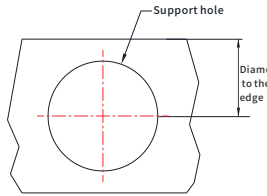
QUARTER-TURN FASTENERS SERIES

Installation of JX-MD2 1/4 quick-lock fastener

Prepare the support panel for the clamping type buckle

Bolt panel preparation

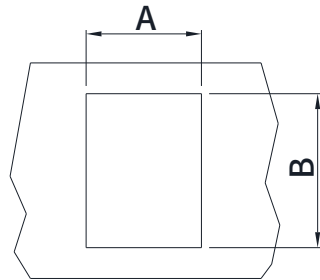
Standard panel hole	
Screw Size	Hole diameter
3.5mm	3.7mm±0.1
5mm	5.1mm±0.1
7mm	7.1mm±0.1
9mm	9.4mm±0.1



Buckles of size	Scope of support	Hole diameter	Diameter to the edge
3.5pocket	0.5-1.8mm	6.0mm±0.2	4.5mm±0.2
5pocket	0.9-2.5mm	8.5mm±0.2	6.5mm-0.5
5Long clip	0.9-2.5mm	8.5mm±0.2	11.0mm-0.2
7pocket	0.9-2.5mm	11.0mm±0.2	8.0mm±0.5
7Long clip	0.7-3.2mm	11.0mm±0.2	11.0mm-0.5
7Thick panel	3.2-5.5mm	11.0mm±0.2	11.0mm-0.5
9(Two models)	0.7-5.5mm	14.0mm±0.2	13.0mm-0.5

Prepare the support panel for the snap type

Buckles Size	Scope of support	Diameter A	Diameter B
5(2 types)	0.9-2.0mm	11mm+0.2	15.5mm+0.2
7(2 types)	0.9-2.0mm	13mm+0.2	17.5mm+0.2



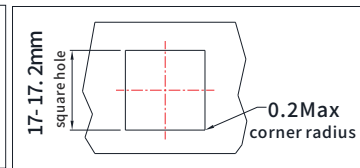
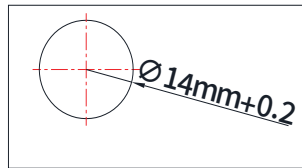
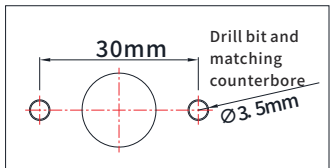
Prepare support panel for press-in type

Buckles Size	Hole diameter Soft metal pressed mold	Hole diameter thermoplastics Compression type or ultrasonic plug-in
5	12.0-12.1mm	11.5-11.6mm
7	15.0-15.1mm	14.5-14.6mm

It is 9mm riveting buckle
Prepare support panel

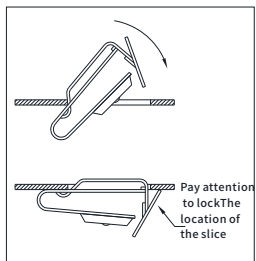
It is 9mm welded buckle
Prepare support panel

9mm front clamping buckle
Prepare support panel

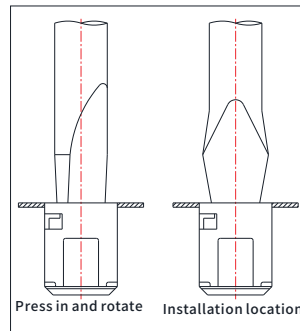
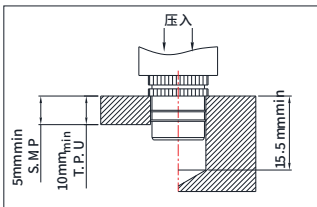


Front mount clip-in buckle installation procedure

Snap-in buckle setup program



Press-in installation procedure (applicable to 5mm 7mm only)



QUARTER-TURN FASTENERS SERIES

JX-MD82 Performance 1/4 turn fastener bolt

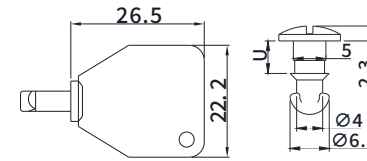
P/N: JX-MD82-29-90-214-10

Materials and surface treatment
Bolts: steel, galvanized and chromate
Or stainless steel

Bracket cover: ABS, black

Tool head key:

Part number P/N: JX-MD82-29-90-214-10



H Head - tool-driven

Round head

Pan head inner hexagon
3mm inner hexagon head

Round head cross

Tool head

Countersunk cross

H-head - manual drive

Hand ring RA

Hand ring RB

P/N: JX-D82-32-301-12 Installation instructions

Hand ring cover:

The retainer shall be placed at the bottom of the bolt head so that it

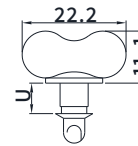
Flush with the surface

Retainer P/N: JX-MD82-32-301-12

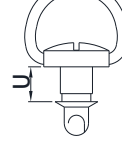
Optional bracelet cover

Part number of bracelet cover: JX-MD82-2-b-000

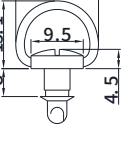
airfoil



Hand ring RA



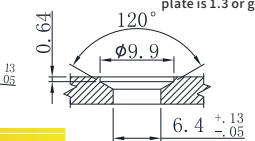
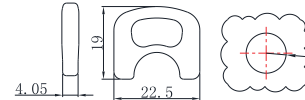
Hand ring RB



His flat type
(when the thickness of the outer plate is 1.3 or greater)



Bolt panel preparation



JX-82MD Lion 1/4 swivel lock fastener bolt selection

Part number selection

H head type

- 11 round head
- 12 airfoil
- 15 hand circular RA
- 16 hand ring RB
- 19. Circular cross head
- 28 flush crosshead
- 78 hexagonal socket head
- T tool head (not applicable to stainless steel)

K Length

Enter the Numbers in the following options table

82 - H - K - M

M Material

- 16 Steel, Zinc
- 20 Stainless steel (not applicable to tool head)

Screw Length Tb									
A		B		C		D		K	U
TMT	The scope of JX-82MD-35-306-10	TMT	The scope of JX-82MD-35-308-55 JX-82MD-35-310-55	TMT T	The scope of JX-82MD-35-315-55	TMT	The scope of All the other clasps		
Min	Max	Min	Max	Min	Max	Min	Max		
0.7	1.2	~	~	~	~	2.3	2.8	100	3.2
1.2	1.7	~	~	~	~	2.8	3.3	120	3.7
1.7	2.2	~	~	~	~	3.3	3.8	140	4.2
2.2	2.7	0	0.5	1.3	1.8	3.8	4.3	160	4.7
2.7	3.2	0.5	1	1.8	2.3	4.3	4.8	180	5.3
3.2	3.7	1	1.5	2.3	2.8	4.8	5.3	200	5.8
3.7	4.2	1.5	2	2.8	3.3	5.3	5.8	220	6.3
4.2	4.7	2	2.5	3.3	3.8	5.8	6.3	240	6.8

Choose the right fastener:

Step 1 choose a clasp

2. Choose retainers and accessories

3. Specify bolt length

Calculate the total value of the locked object using the formula of the selected clasp

Thickness (TMT). Bolt length selection table (left) Find the TMT range, using the selected clasp given column (A, B, C, or D) look for K

4. Complete bolt part number

By specifying head type H, bolt length K and material M

Such as:

For riveted JX-MD82-35-302-15 with base buckle,

Use column D if the TMT value is calculated as 5.2, then K=200

Complete part number for one-letter type in steel materials

To: JX-MD82-11-200-16.