

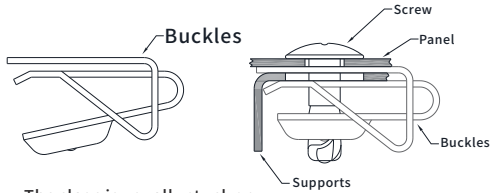
QUARTER-TURN FASTENERS

JX-MD2 1/4 JX-MD2 Quick-lock fastener

Using range:
 1. Car & rail traffic bottom baffle
 2. The hood
 3. The panel

1/4 Quarter-Turn Stud, Medium Size, Phillips Recess

Quick release 1/4 quick lock fastener provides the industry with the widest range of options, practical, low-cost solutions, especially suitable for large users. The quick-lock fastening solutions offered by j-x range from the smallest to the most rugged application environments. Bolt sizes are available in 3.5mm, 7mm and 9mm sizes. The clasp is available in a wide range of options, including front-mounted clasps for thermoplastics.



The clasp is usually stuck or clipped to the support panel

component

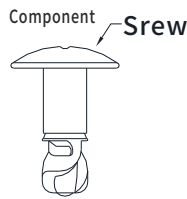
1. Tighten by 1/4 turn
2. Positive stop
3. Shock resistant

Buckles style:

- Clamp type - clamp to the edge of the support panel
- Long clamping type - allows bolt holes to be placed away from panel edge pegs
- Side mounted - used on the support panel perpendicular to the bolt panel
- Thick plate clamping type - suitable for thickness below 5.5 mm (j-x only)
- Has 7 mm support panel on
- Snap - snap into a prefabricated hole on the support panel
- Front clamp - clamp into a prefabricated hole on the support panel (only 9mm)
- Press-in - suitable for soft metals and thermoplastics, press-in or ultrasonic mounting
- Riveted - riveted to support panel
- Welded - welded to support panel

Supports

The fastener part includes a spiral column Bolt, an optional bolt retainer (not shown) And a clasp (clip, as shown).



Step 1: choose the style of buckle

Load requirements and installation methods should be considered when selecting j-x buckles. Choose a fixed method. Not every clasp is there so this time, so step two is very important.

Step 2: choose the clasp size

Refer to the j-x performance chart to select the most suitable buckle size to meet your needs.

Step 3: choose bolt style

JX- bolts of each size are displayed on the clasp page. Each bolt head style to choose.

The length of the bolt is determined by calculating the "total thickness of the locked object (TMT)" shown in the buckle page.

Step 4: select the optional gasket

If you want the bolt to remain in the panel after the buckle is released, you need to select

A plastic or metal clasp.

Fastener performance table:

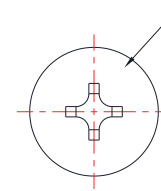
Screw Size	Buckles style	The intensity of buckles(N)	Maximum total thickness of locked object (TMT)2
3.5mm	Pocket clamping type	120.0	2.5 to 26.4mm
	Push the type	-	0.5 to 27.4mm
5mm	Pocket clamping type	138.0	2.5 to 25.4mm
	Long clamping type	138.0	2.5 to 25.4mm
	Front clamping type	62.0	2.5 to 25.4mm
	Push the type	-	0.5 to 27.4mm
7mm	Pocket clamping type	200.0	2.5 to 25.4mm
	Long clamping type	222.0	1.5 to 28.4mm
	Side mounted type	222.0	1.5 to 28.4mm
	Thick panel clamping type	222.0	3.5 to 30.4mm
	Front clamping type	142.0	2.5 to 25.4mm
9mm	Push the type	-	0.5 to 27.4mm
	The clamping type	271.0	2.0 to 28.9mm
	Side mounted type	271.0	2.0 to 28.9mm
	Front clamping type	102.0	2.5 to 17.4mm
	Riveting type	289.0	2.0 to 28.9mm
	The welding type	289.0	2.0 to 28.9mm

QUARTER-TURN FASTENERS

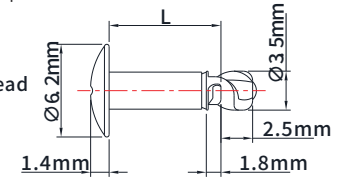
JX-MD2 3.5mm Bolts and retainers for 1/4 turn fastener 3.5mm



P/N:
 JX-MD2-513-7(L)-190
 Surface treatment -- 90=galvanized, chromate
 Material(steel)
 Bolt length number - determined on the buckle selection page
 Basic part number - no. 1 cross head



1号十字头
 No. 1 cross head



Quarter-Turn Screws, Medium Size, Phillips Recess
 Standard materials and surface treatment

Treatment: case hardened steel

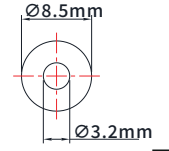
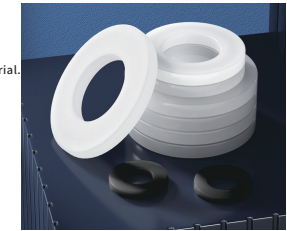
Surface treatment: galvanized chromate
 Additional bolt size:

L dimension - length of bolt (L) depends on the type of clasp selected and the thickness of the material. Determine the length of bolts you need based on the supplied form for each type of buckle.

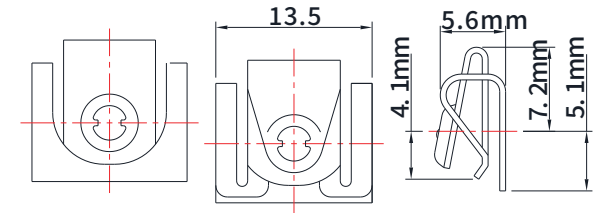
Note: if plastic buckles are used, the total thickness of the lock (TMT) will be increased by 1mm.

Plastic flat washers

P/N: JX-MD2-513-7(L)-190
 Standard materials and surface treatment
 Material: High density polyethylene
 Surface treatment: Natural color



JX-MD2 1/4 转快锁式紧固件的搭扣 袖珍夹型 -- 3.5mm JX-MD2 1/4 turn fastener pocket clasp clamping type -- 3.5mm



Pocket clamping type

P/N: JX-MD2-533-300-190

Materials and surface treatment

Material: spring steel

Surface treatment: galvanized chromate
 Mechanical properties

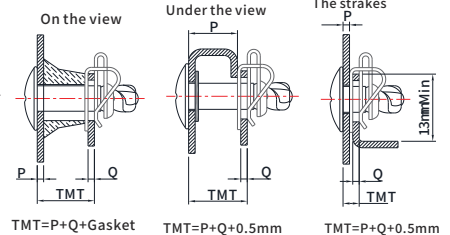
Maximum load that does not cause deformation: 120N
 Maximum torque: 150N.cm

Determine bolt length

1. Calculate the total thickness (TMT) of the locked object with table 1 below.

2. Then find out the applicable TMT range according to the table.

Fill bolt part number with bolt length number.



TMT=P+Q+Gasket

TMT=P+Q+0.5mm

TMT=P+Q+0.5mm

Table 1: total thickness of locked objects (TMT)

被锁物的总厚度(TMT)	2.5-3.4	3.5-4.4	4.5-5.4	5.5-6.4	6.5-7.4	7.5-8.4	8.5-9.4	9.5-10.4	10.5-11.4	11.5-12.4	12.5-13.4	13.5-14.4
被锁物的总厚度(TMT)	2.5-3.4	3.5-4.4	4.5-5.4	5.5-6.4	6.5-7.4	7.5-8.4	8.5-9.4	9.5-10.4	10.5-11.4	11.5-12.4	12.5-13.4	13.5-14.4
螺栓长度编码(L Dim)	07	08	09	10	11	12	13	14	15	16	17	18
螺栓长度编码(L Dim)	07	08	09	10	11	12	13	14	15	16	17	18
被锁物的总厚度(TMT)	14.5-15.4	15.5-16.4	16.5-17.4	17.5-18.4	18.5-19.4	19.5-20.4	20.5-21.4	21.5-22.4	22.5-23.4	23.5-24.4	24.5-25.4	25.5-26.4
被锁物的总厚度(TMT)	14.5-15.4	15.5-16.4	16.5-17.4	17.5-18.4	18.5-19.4	19.5-20.4	20.5-21.4	21.5-22.4	22.5-23.4	23.5-24.4	24.5-25.4	25.5-26.4
螺栓长度编码(L Dim)	19	20	21	22	23	24	25	26	27	28	29	30
螺栓长度编码(L Dim)	19	20	21	22	23	24	25	26	27	28	29	30

Unit:mm