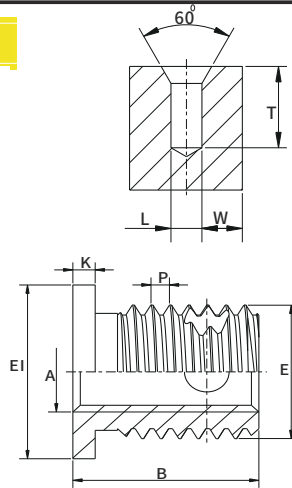


JX Threaded Inserts for Plastic Series

Self-Tapping Flange Head Threaded Insert Nut JX-213T/JX-214T



Part Number Designation

JX-214-G05-010-ST

Product Code Size Material Code

Part Number Designation

JX-213-G05-010-SS

Product Code Size Material Code

Material Code Description:

1. Non quenched Carbon steel.....010
2. Quenched Carbon steel.....020
3. Brass.....030

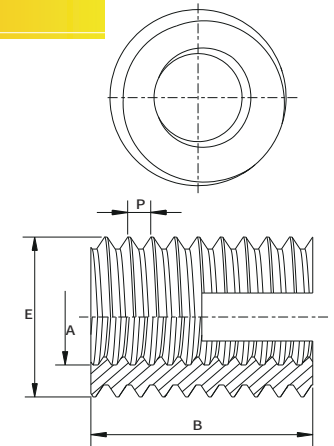
Unit:mm

P/N			Internal Thread	External Thread			Stud Diameter	Head Length	Long	Bore Diameter	
Non quenched Carbon steel	Quenched Carbon steel	Brass	A	E	P	EI	K	B	T	Metal	Plastic
JX-213T-G05-010-ST	JX-213T-G05-020-STT	JX-213T-G05-030-B	M5	8	1	11	1	8	9	Φ7.6-7.7	Φ7.4-7.6
JX-214T-G05-010-ST	JX-214T-G05-020-STT	JX-214T-G05-030-B						11	13		
JX-213T-G06-010-ST	JX-213T-G06-020-STT	JX-213T-G06-030-B	M6	10	1.25	13	1.5	9.5	10	Φ9.5-9.6	Φ9.3-9.5
JX-214T-G06-010-ST	JX-214T-G06-020-STT	JX-214T-G06-030-B						13.5	15		
JX-213T-G08-010-ST	JX-213T-G08-020-STT	JX-213T-G08-030-B	M8	12	1.5	15	1.5	10.5	11	Φ11.3-11.5	Φ11.1-11.3
JX-214T-G08-010-ST	JX-214T-G08-020-STT	JX-214T-G08-030-B						15.5	17		
JX-213T-G10-010-ST	JX-213T-G10-020-STT	JX-213T-G10-030-B	M10	14	1.5	17	1.5	11.5	13	Φ13.4-13.5	Φ13.1-13.3
JX-214T-G10-010-ST	JX-214T-G10-020-STT	JX-214T-G10-030-B						19.5	22		

http://www.juxinfasteners.com

JX Threaded Inserts for Plastic Series

JX-302T Slotted Self-Tapping Threaded Inserts



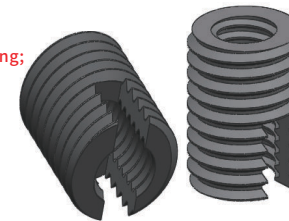
Part Number Designation

JX-302-M6-8-ST

Type and Thread Long Material Code Code Code
Material: Carbon Steel

Material:

- carbon steel, color zinc plating;
- Stainless steel 303cu



Features:

- 1) tapping screw self-tapping ability, base metal without pre-tapping, cost savings.
- 2) self-tapping screw thread has a repair for the role of the screw thread, thread repair can continue to use the same screws.
- 3) self-tapping screw on the vibration resistance, to prevent loosening.
- 4) self-tapping screw installation is simpler than ordinary wire screw, faster, and poor installation rate is almost zero.

Part Number Designation

JX-302-M6-8-SS

Type and Thread Long Material Code Code Code
Material: Stainless steel

Unit:mm

302 Type (Slotting)	P/N		Long	External Thread	(mm) Reference hole diameter			Drill hole depth min.
	Carbon Steel	Stainless Steel			Plastic	Aluminium alloy	Cast iron	
			B	E				
M2.5X0.45	JX-302-M2.5-6-ST	JX-302-M2.5-6-SS	6	M4.5X0.5	4.0-4.1	4.1-4.2	4.2-4.3	8
M3X0.5	JX-302-M3-6-ST	JX-302-M3-6-SS	6	M5X0.5	4.5-4.6	4.6-4.7	4.7-4.8	8
M3.5X0.6	JX-302-M3.5-8-ST	JX-302-M3.5-8-SS	8	M6X0.75	5.3-5.4	5.5-5.6	5.6-5.7	10
M4X0.7	JX-302-M4-8-ST	JX-302-M4-8-SS	8	M6.5X0.75	5.8-5.9	6.0-6.1	6.1-6.2	10
M5X0.8	JX-302-M5-10-ST	JX-302-M5-10-SS	10	M8X1.0	7.1-7.2	7.3-7.5	7.5-7.6	13
M6X1.0	JX-302-M6-12-ST	JX-302-M6-12-SS	12	M9X1.0	8.1-8.2	8.3-8.5	8.5-8.6	15
M6X1.0	JX-302-M6-14-ST	JX-302-M6-14-SS	14	M10X1.5	9.0-9.2	9.2-9.3	9.3-9.4	17
M8X1.25	JX-302-M8-15-ST	JX-302-M8-15-SS	15	M12X1.5	10.6-10.8	11-11.2	11.2-11.4	18
M10X1.5	JX-302-M10-18-ST	JX-302-M10-18-SS	18	M14X1.5	12.6-12.8	13.0-13.3	13.2-13.4	22
M12X1.75	JX-302-M12-22-ST	JX-302-M12-22-SS	22	M16X1.5	14.6-14.8	15.0-15.3	15.2-15.4	26
M14X2.0	JX-302-M14-24-ST	JX-302-M14-24-SS	24	M18X1.5	16.6-16.8	17.0-17.3	17.2-17.5	28
M16X2.0	JX-302-M16-22-ST	JX-302-M16-22-SS	22	M20X1.5	18.6-18.8	19.0-19.3	19.2-19.5	27
M18X2.5	JX-302-M18-24-ST	JX-302-M18-24-SS	24	M22X1.5	20.6-20.8	21.0-21.3	21.2-21.5	29
M20X2.5	JX-302-M20-27-ST	JX-302-M20-27-SS	27	M26X1.5	24.6-24.8	25.0-25.3	25.2-25.5	32
M22X2.5	JX-302-M22-30-ST	JX-302-M22-30-SS	30	M26X1.5	24.6-24.8	25.0-25.3	25.2-25.5	36
M24X3.0	JX-302-M24-30-ST	JX-302-M24-30-SS	30	M30X1.5	28.6-28.8	29.0-29.3	29.2-29.5	36

http://www.juxinfasteners.com