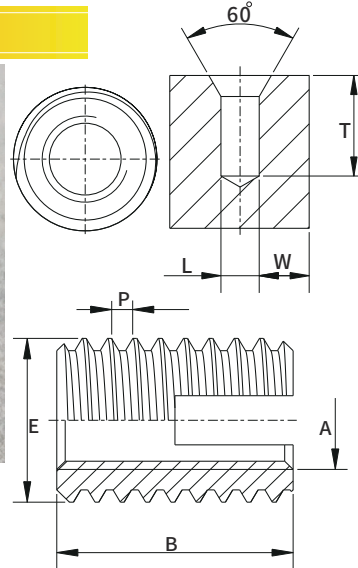
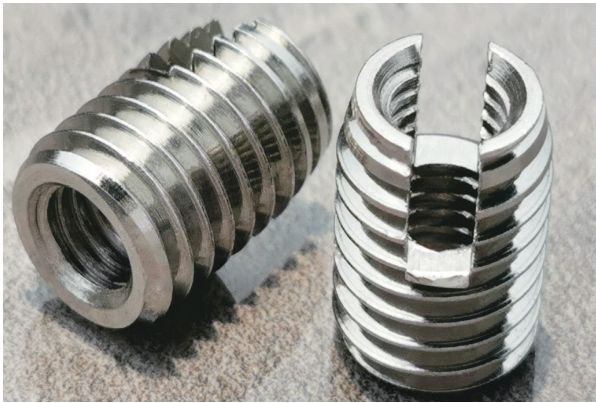


JX Threaded Inserts for Plastic Series

Slotted Self-Tapping Threaded Inserts JX-202T



Material Code Description:

1. Non quenched Carbon steel.....010
2. Quenched Carbon steel.....020
3. Brass.....030
4. Antirust Material 1.4105.....040
5. Antirust Material 1.4305.....050

1. Application: the inlaying of a groove and internal thread is a kind of self-tapping fastener, which can create the ability of high load on low shear stress material, and provide wear-resisting and anti-seismic thread connection. It is suitable for installation on the following materials: light alloy, cast iron, brass, bronze, non-ferrous metal, plastic, laminated materials, hardwood.

2. Material: untempered steel, surface hardened steel, galvanizing, chromium plating, brass, anti-rust material 1.4105, anti-rust materials 1.4305

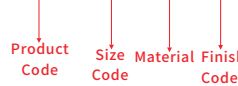
Tolerance: ISO2768-m

Margins W: light alloy $\geq 0.2-0.6E$; cast iron $\geq 0.3-0.5E$; plastic $\geq 0.25-0.9E$

Note: M2/M2.5 is only suitable for low-strength materials, because the shear strength of the screws in the propulsion tool may not be sufficient.

Part Number Designation

JX-202T-G02- 010- ZI

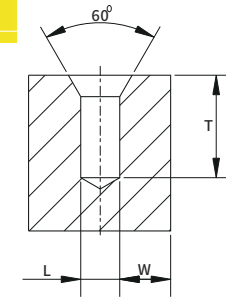


Unit:mm

Part No				Internal Thread	External Thread	Long	Blind hole boring minimum depth	Bore Diameter L		
Carbon Steel	Brass	1.4105 Stainless Steel	1.4305 Stainless Steel					A	Plastic	
JX-202T-G02-010	JX-202T-G02-030	JX-202T-G02-040	JX-202T-G02-050	M2	4.5	0.5	6	8	Φ4.2-4.3	Φ4.1-4.2
JX-202T-G2.5-010	JX-202T-G2.5-030	JX-202T-G2.5-040	JX-202T-G2.5-050	M2.5	4.5	0.5	6	8	Φ4.2-4.3	Φ4.1-4.2
JX-202T-G03-010	JX-202T-G03-030	JX-202T-G03-040	JX-202T-G03-050	M3	5	0.5	6	8	Φ4.7-4.8	Φ4.6-4.7
JX-202T-G3.5-010	JX-202T-G3.5-030	JX-202T-G3.5-040	JX-202T-G3.5-050	M3.5	6	0.75	8	10	Φ5.6-5.7	Φ5.5-5.6
JX-202T-G04-010	JX-202T-G04-030	JX-202T-G04-040	JX-202T-G04-050	M4	6.5	0.75	8	10	Φ6.1-6.2	Φ6.0-6.1
JX-202T-G05-010	JX-202T-G05-030	JX-202T-G05-040	JX-202T-G05-050	M5	8	1	10	13	Φ7.5-7.6	Φ7.3-7.5
JX-202T-G06-010	JX-202T-G06-030	JX-202T-G06-040	JX-202T-G06-050	M6(a)	9	1	12	15	Φ8.5-8.6	Φ8.3-8.5
JX-202T-G6.1-010	JX-202T-G6.1-030	JX-202T-G6.1-040	JX-202T-G6.1-050	M6	10	1.5	14	17	Φ9.2-9.4	Φ8.9-9.2
JX-202T-G08-010	JX-202T-G08-030	JX-202T-G08-040	JX-202T-G08-050	M8	12	1.5	15	18	Φ11.2-11.4	Φ10.9-11.2
JX-202T-G10-010	JX-202T-G10-030	JX-202T-G10-040	JX-202T-G10-050	M10	14	1.5	18	22	Φ13.2-13.4	Φ12.9-13.2
JX-202T-G12-010	JX-202T-G12-030	JX-202T-G12-040	JX-202T-G12-050	M12	16	1.5	22	26	Φ15.2-15.4	Φ14.9-15.2
JX-202T-G14-010	JX-202T-G14-030	JX-202T-G14-040	JX-202T-G14-050	M14	18	1.5	24	28	Φ17.2-17.4	Φ16.9-17.2
JX-202T-G16-010	JX-202T-G16-030	JX-202T-G16-040	JX-202T-G16-050	M16	20	1.5	22	27	Φ19.2-19.4	Φ18.9-19.2
JX-202T-G18-010	JX-202T-G18-030	JX-202T-G18-040	JX-202T-G18-050	M18	22	1.5	24	29	Φ21.2-21.4	Φ20.9-21.2
JX-202T-G20-010	JX-202T-G20-030	JX-202T-G20-040	JX-202T-G20-050	M20	26	1.5	27	32	Φ25.2-25.4	Φ24.9-25.2
JX-202T-G22-010	JX-202T-G22-030	JX-202T-G22-040	JX-202T-G22-050	M22	26	1.5	30	36	Φ25.2-25.4	Φ24.9-25.2
JX-202T-G24-010	JX-202T-G24-030	JX-202T-G24-040	JX-202T-G24-050	M24	30	1.5	30	36	Φ29.2-29.4	Φ28.9-29.2
JX-202T-G27-010	JX-202T-G27-030	JX-202T-G27-040	JX-202T-G27-050	M27	34	1.5	30	36	Φ33.2-33.4	Φ32.9-33.2
JX-202T-G30-010	JX-202T-G30-030	JX-202T-G30-040	JX-202T-G30-050	M30	36	1.5	40	46	Φ35.2-35.4	Φ34.9-35.2

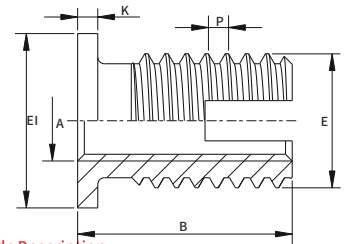
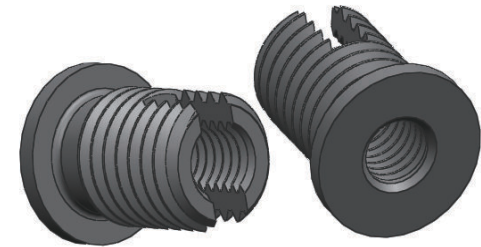
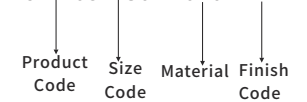
JX Threaded Inserts for Plastic Series

Self-Tapping Flange Head Threaded Insert Nut JX-203T



Part Number Designation

JX-203T-G04- 010- ZI



Material Code Description:

1. Non quenched Carbon steel.....010
2. Quenched Carbon steel.....020
3. Brass.....030

1. Application: Masticated inserts are self-tapping fasteners that create the ability to carry high loads on low-shear materials and provide wear-resistant, shock-resistant threaded connections. It is suitable for installation on the following materials: light alloys, cast iron, brass, bronze, non-ferrous metals, plastics, laminates, hardwoods. The nail head is used to ensure the current flow and support the simultaneous fixing of multiple parts, and the pull-through force will be greatly increased when the nail head is pressed.

2. Material: Untempered steel, surface hardened steel, galvanizing, chromium plating, brass

Tolerance: ISO2768-m

3. Margins W: light alloy $\geq 0.2-0.6E$; cast iron $\geq 0.3-0.5E$; plastic $\geq 0.25-0.9E$

Unit:mm

Part No			Internal Thread	External Thread	Head Diameter	Head Long	Long	Blind hole boring minimum depth	Bore Diameter L		
Non quenched Carbon steel	Quenched Carbon steel	Brass							A	Plastic	
JX-203T-G04-010	JX-203T-G04-020	JX-203T-G04-030	M4	6.5	0.75	9	1	9	10	Φ6.1-6.2	Φ6.0-6.1
JX-203T-G05-010	JX-203T-G05-020	JX-203T-G05-030	M5	8	1	11	1	11	12	Φ7.5-7.6	Φ7.3-7.5
JX-203T-G06-010	JX-203T-G06-020	JX-203T-G06-030	M6	10	1.5	13	1.5	15.5	16	Φ9.2-9.4	Φ8.9-9.2
JX-203T-G08-010	JX-203T-G08-020	JX-203T-G08-030	M8	12	1.5	15	1.5	16.5	17	Φ11.2-11.4	Φ10.9-11.2
JX-203T-G10-010	JX-203T-G10-020	JX-203T-G10-030	M10	14	1.5	17	1.5	19.5	20	Φ13.2-13.4	Φ12.9-13.2