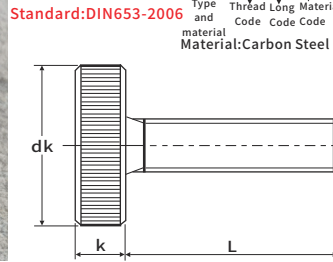


# JX Threaded Inserts for Plastic Series

## Knurled Thumb Screws



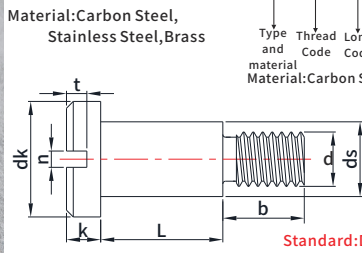
Standard: DIN653-2006  
Material: Carbon Steel

Part Number Designation: JX-D653-M1-2-ST  
Material: Carbon Steel

Part Number Designation: JX-D653-M1-2-SS  
Material: Stainless Steel

Size d	Thread Code	P/N			L	Unit:mm			
		Carbon Steel	Stainless steel	Brass		Long Code		dk Max	dk Min
M1	0.25	JX-D653-M1-L-ST	JX-D653-M1-L-SS	JX-D653-M1-L-B	2 3 4 5 6	5.74	5.26	1.5	1.25
M1.2	0.25	JX-D653-M1.2-L-ST	JX-D653-M1.2-L-SS	JX-D653-M1.2-L-B	2 3 4 5 6 8	6.24	5.76	1.5	1.25
M1.4	0.30	JX-D653-M1.4-L-ST	JX-D653-M1.4-L-SS	JX-D653-M1.4-L-B	3 4 5 6 8 10	7.29	6.71	2.0	1.75
M1.6	0.35	JX-D653-M1.6-L-ST	JX-D653-M1.6-L-SS	JX-D653-M1.6-L-B	3 4 5 6 8 10 12	7.79	7.29	2.0	1.75
M2	0.40	JX-D653-M2-L-ST	JX-D653-M2-L-SS	JX-D653-M2-L-B	4 5 6 8 10 12 14 16	9.29	8.71	2.0	1.75
M2.5	0.45	JX-D653-M2.5-L-ST	JX-D653-M2.5-L-SS	JX-D653-M2.5-L-B	5 6 8 10 12 14 16 18	11.35	10.65	2.5	2.25
M3	0.50	JX-D653-M3-L-ST	JX-D653-M3-L-SS	JX-D653-M3-L-B	6 8 10 12 14 16 18 20	12.35	11.65	2.5	2.25
M4	0.70	JX-D653-M4-L-ST	JX-D653-M4-L-SS	JX-D653-M4-L-B	8 10 12 14 16 18 20 22 25	16.35	15.65	3.5	3.2
M5	0.80	JX-D653-M5-L-ST	JX-D653-M5-L-SS	JX-D653-M5-L-B	10 12 14 16 18 20 22 25 28 30	20.42	19.58	4.0	3.7
M6	1.0	JX-D653-M6-L-ST	JX-D653-M6-L-SS	JX-D653-M6-L-B	12 14 16 18 20 22 25 28 30	24.42	23.58	5.0	4.7
M8	1.25	JX-D653-M8-L-ST	JX-D653-M8-L-SS	JX-D653-M8-L-B	16 18 20 22 25 28 30 32 35	30.42	29.58	6.0	5.7
M10	1.5	JX-D653-M10-L-ST	JX-D653-M10-L-SS	JX-D653-M10-L-B	20 22 25 28 30 32 35 38 40	36.5	35.5	8.0	7.64

## Slotted pan head screws with shoulder



Material: Carbon Steel, Stainless Steel, Brass

Part Number Designation: JX-D923-M1.4-3-ST  
Material: Carbon Steel

Part Number Designation: JX-D923-M1.4-3-SS  
Material: Stainless Steel

Size d	Thread Code	P/N		L	b	Unit:mm											
		Carbon Steel	Stainless steel			Long Code		dk Max	dk Min	ds Max	ds Min	K Max	K Min	n Max	n Min	t Max	t Min
M1.4	0.30	JX-D923-M1.4-L-ST	JX-D923-M1.4-L-SS	3 4 5 6 8 10 12 14	2.2	3.5	3.32	2.0	1.975	1.02	0.78	0.5	0.36	0.6	0.45		
M1.6	0.35	JX-D923-M1.6-L-ST	JX-D923-M1.6-L-SS	3 4 5 6 8 10 12 14	2.5	4.0	3.82	2.5	2.475	1.12	0.88	0.6	0.46	0.7	0.5		
M2	0.40	JX-D923-M2-L-ST	JX-D923-M2-L-SS	4 5 6 8 10 12 14 15	3	4.5	4.32	2.8	2.775	1.32	1.08	0.7	0.56	0.8	0.6		
M2.5	0.45	JX-D923-M2.5-L-ST	JX-D923-M2.5-L-SS	4 5 6 8 10 12 14 15	3.5	6.0	5.82	3.5	3.47	1.62	1.38	0.8	0.66	0.95	0.75		
M3	0.50	JX-D923-M3-L-ST	JX-D923-M3-L-SS	5 6 8 10 12 14 15	4.5	7.0	6.78	4.0	3.97	1.92	1.68	1.0	0.86	1.15	0.9		
M3.5	0.6	JX-D923-M3.5-L-ST	JX-D923-M3.5-L-SS	6 8 10 12 14 15 20	5.5	7.5	7.28	4.5	4.47	2.12	1.88	1.0	0.86	1.3	1.0		
M4	0.70	JX-D923-M4-L-ST	JX-D923-M4-L-SS	6 8 10 12 14 15 20	6.0	8.5	8.28	5.5	5.47	2.52	2.28	1.2	1.06	1.5	1.2		
M5	0.80	JX-D923-M5-L-ST	JX-D923-M5-L-SS	8 10 12 14 15 20 25	7.0	11	10.73	7.0	6.964	2.82	2.58	1.51	1.26	1.6	1.3		
M6	1.0	JX-D923-M6-L-ST	JX-D923-M6-L-SS	10 12 14 15 20 25 30	9.0	13	12.73	8.0	7.964	3.25	2.95	1.91	1.66	1.9	1.5		
M8	1.25	JX-D923-M8-L-ST	JX-D923-M8-L-SS	10 12 14 15 20 25 30	11	16	15.73	10	9.964	3.95	3.65	2.31	2.06	2.4	1.9		
M10	1.5	JX-D923-M10-L-ST	JX-D923-M10-L-SS	8 10 12 14 15 20 25	14	20	19.67	13	12.957	4.75	4.45	2.81	2.56	2.8	2.3		

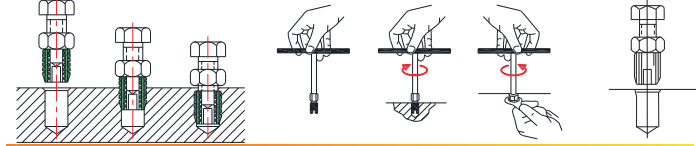
## Installation method of self-tapping inlay (screw sleeve)

- When a small number of installations is available, a simple installation method can be adopted, which is to adopt the bolt and nut with the corresponding specifications, and fix the self-attack screw sleeve on the corresponding type screw, and use the same type of nut to fix it, so that the three will become a whole. With the handlebar sleeve is screwed into the screw hole, then exit
- The batch installation of self tapping inserts (threaded sleeve) can be made by special screw installation tools. The operator can't get the right picture at the end of the operation. The end of the tool is a four sided square handle, which can be installed by manual wrench, and can also be equipped with electric tools or pneumatic tools.

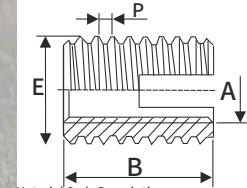
# JX Threaded Inserts for Plastic Series

## Self-tapping inserts (screw sets) installation precautions:

- For different processing materials, refer to drill size specification for pre-drilling. When the corresponding material hardness is high, please increase the bottom hole slightly.
- The self-tapping screw set of screwing tools front screw head, a screw slot end down, please confirm when the load vertical alignment base hole, a screw must not tilt, install the base hole of a screw also can guide 2-3 laps, installation guide, Avoid installation of swirls.



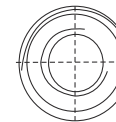
## Slotted Self-Tapping Threaded Inserts (Inch) JX-201T



Material Code Description:

- Non quenched Carbon steel.....010
  - Quenched Carbon steel.....020
  - Brass.....030
  - Antirust Material 1.4105.....040
  - Antirust Material 1.4305.....050
1. Application: Slot and internal thread (British thread, a uniform standard coarse thread, uniform standard fine thread) inserts.
2. Material: untempered steel, surface hardened steel, galvanizing, chromium plating, brass, anti-rust material 1.4105, anti-rust materials 1.4305
3. Tolerance: ISO2768-m
4. Margins W: light alloy  $\geq 0.2-0.6E$ ; cast iron  $\geq 0.3-0.5E$ ; plastic  $\geq 0.25-0.9E$

Material: Carbon Steel, Stainless Steel, Brass



Part No				Internal Thread	External Thread	Long	Blind hole boring minimum depth	Bore Diameter L		
Carbon steel	Brass	1.4105 Stainless steel	1.4305 Stainless steel					Metal	Plastic	
JX-201T-E01-010	JX-201T-E01-030	JX-201T-E01-040	JX-201T-E01-050	1/4	10	1.5	14	17	Φ9.2-9.4	Φ8.9-9.2
JX-201T-E02-010	JX-201T-E02-030	JX-201T-E02-040	JX-201T-E02-050	5/16	12	1.5	15	18	Φ11.2-11.4	Φ10.9-11.2
JX-201T-E03-010	JX-201T-E03-030	JX-201T-E03-040	JX-201T-E03-050	3/8	14	1.5	18	22	Φ13.2-13.4	Φ12.9-13.2
JX-201T-E04-010	JX-201T-E04-030	JX-201T-E04-040	JX-201T-E04-050	7/16	16	1.5	22	26	Φ15.2-15.4	Φ14.9-15.2
JX-201T-E05-010	JX-201T-E05-030	JX-201T-E05-040	JX-201T-E05-050	1/2	18	1.5	22	26	Φ17.2-17.4	Φ16.9-17.2
JX-201T-E06-010	JX-201T-E06-030	JX-201T-E06-040	JX-201T-E06-050	5/8	20	1.5	22	27	Φ19.2-19.4	Φ18.9-19.2
JX-201T-E07-010	JX-201T-E07-030	JX-201T-E07-040	JX-201T-E07-050	4-40	5	0.5	6	8	Φ4.7-4.8	Φ4.6-4.7
JX-201T-E08-010	JX-201T-E08-030	JX-201T-E08-040	JX-201T-E08-050	6-32	6	0.75	8	10	Φ5.6-5.7	Φ5.5-5.6
JX-201T-E09-010	JX-201T-E09-030	JX-201T-E09-040	JX-201T-E09-050	8-32	6.5	0.75	8	10	Φ6.1-6.2	Φ6.0-6.1
JX-201T-E10-010	JX-201T-E10-030	JX-201T-E10-040	JX-201T-E10-050	10-24	8	1	10	13	Φ7.5-7.6	Φ7.3-7.5
JX-201T-E11-010	JX-201T-E11-030	JX-201T-E11-040	JX-201T-E11-050	1/4-20	10	1.5	14	17	Φ9.2-9.4	Φ8.9-9.2
JX-201T-E12-010	JX-201T-E12-030	JX-201T-E12-040	JX-201T-E12-050	5/16-18	12	1.5	15	18	Φ11.2-11.4	Φ10.9-11.2
JX-201T-E13-010	JX-201T-E13-030	JX-201T-E13-040	JX-201T-E13-050	3/8-16	14	1.5	18	22	Φ13.2-13.4	Φ12.9-13.2
JX-201T-E14-010	JX-201T-E14-030	JX-201T-E14-040	JX-201T-E14-050	7/16-14	16	1.5	22	26	Φ15.2-15.4	Φ14.9-15.2
JX-201T-E15-010	JX-201T-E15-030	JX-201T-E15-040	JX-201T-E15-050	1/2-13	18	1.5	22	28	Φ17.2-17.4	Φ16.9-17.2
JX-201T-E16-010	JX-201T-E16-030	JX-201T-E16-040	JX-201T-E16-050	5/8-11	20	1.5	22	27	Φ19.2-19.4	Φ18.9-19.2
JX-201T-E17-010	JX-201T-E17-030	JX-201T-E17-040	JX-201T-E17-050	4-48	5	0.5	6	8	Φ4.7-4.8	Φ4.6-4.7
JX-201T-E18-010	JX-201T-E18-030	JX-201T-E18-040	JX-201T-E18-050	6-40	6	0.75	8	10	Φ5.6-5.7	Φ5.5-5.6
JX-201T-E19-010	JX-201T-E19-030	JX-201T-E19-040	JX-201T-E19-050	8-36	6.5	0.75	8	10	Φ6.1-6.2	Φ6.0-6.1
JX-201T-E20-010	JX-201T-E20-030	JX-201T-E20-040	JX-201T-E20-050	10-32	8	1	10	13	Φ7.5-7.6	Φ7.3-7.5
JX-201T-E21-010	JX-201T-E21-030	JX-201T-E21-040	JX-201T-E21-050	1/4-28	10	1.5	14	17	Φ9.2-9.4	Φ8.9-9.2
JX-201T-E22-010	JX-201T-E22-030	JX-201T-E22-040	JX-201T-E22-050	5/16-24	12	1.5	15	18	Φ11.2-11.4	Φ10.9-11.2
JX-201T-E23-010	JX-201T-E23-030	JX-201T-E23-040	JX-201T-E23-050	3/8-24	14	1.5	18	22	Φ13.2-13.4	Φ12.9-13.2
JX-201T-E24-010	JX-201T-E24-030	JX-201T-E24-040	JX-201T-E24-050	7/16-20	16	1.5	22	26	Φ15.2-15.4	Φ14.9-15.2
JX-201T-E25-010	JX-201T-E25-030	JX-201T-E25-040	JX-201T-E25-050	1/2-20	18	1.5	22	28	Φ17.2-17.4	Φ16.9-17.2
JX-201T-E26-010	JX-201T-E26-030	JX-201T-E26-040	JX-201T-E26-050	5/8-18	20	1.5	22	27	Φ19.2-19.4	Φ18.9-19.2