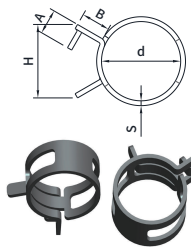


STAMPING FASTENERS SERIES

DIN3021-1(A)-1999 Hose clamps - Spring band clamp - Type A(c=15mm)



Part Number Designation
 JX-DIN3021A - 13 - 15 - 65MN

Type and Material: 65MN
 Size Code: 13
 Width Code: 15
 Material Code: 65MN

Part Number Designation
 JX-DIN3021A - 13 - 15 - CS

Type and Material: Carbon steel
 Size Code: 13
 Width Code: 15
 Material Code: CS

Material: 65MN, Carbon steel, Stainless steel Unit:mm

Size d	P/N			S ±0.4	C ±0.3	A max.	B max.	E ±0.7	G ±0.7	H max.
	65MN	Carbon steel	Stainless steel							
13	JX-DIN3021A-13-15-65MN	JX-DIN3021A-13-15-CS	JX-DIN3021A-13-15-SS	0.8						40
14	JX-DIN3021A-14-15-65MN	JX-DIN3021A-14-15-CS	JX-DIN3021A-14-15-SS							
15	JX-DIN3021A-15-15-65MN	JX-DIN3021A-15-15-CS	JX-DIN3021A-15-15-SS							
16	JX-DIN3021A-16-15-65MN	JX-DIN3021A-16-15-CS	JX-DIN3021A-16-15-SS							
17	JX-DIN3021A-17-15-65MN	JX-DIN3021A-17-15-CS	JX-DIN3021A-17-15-SS							
18	JX-DIN3021A-18-15-65MN	JX-DIN3021A-18-15-CS	JX-DIN3021A-18-15-SS							
19	JX-DIN3021A-19-15-65MN	JX-DIN3021A-19-15-CS	JX-DIN3021A-19-15-SS							
20	JX-DIN3021A-20-15-65MN	JX-DIN3021A-20-15-CS	JX-DIN3021A-20-15-SS							
21	JX-DIN3021A-21-15-65MN	JX-DIN3021A-21-15-CS	JX-DIN3021A-21-15-SS							
22	JX-DIN3021A-22-15-65MN	JX-DIN3021A-22-15-CS	JX-DIN3021A-22-15-SS							
23	JX-DIN3021A-23-15-65MN	JX-DIN3021A-23-15-CS	JX-DIN3021A-23-15-SS							
24	JX-DIN3021A-24-15-65MN	JX-DIN3021A-24-15-CS	JX-DIN3021A-24-15-SS							
25	JX-DIN3021A-25-15-65MN	JX-DIN3021A-25-15-CS	JX-DIN3021A-25-15-SS							
26	JX-DIN3021A-26-15-65MN	JX-DIN3021A-26-15-CS	JX-DIN3021A-26-15-SS							
27	JX-DIN3021A-27-15-65MN	JX-DIN3021A-27-15-CS	JX-DIN3021A-27-15-SS							
29	JX-DIN3021A-29-15-65MN	JX-DIN3021A-29-15-CS	JX-DIN3021A-29-15-SS							
30	JX-DIN3021A-30-15-65MN	JX-DIN3021A-30-15-CS	JX-DIN3021A-30-15-SS							
32	JX-DIN3021A-32-15-65MN	JX-DIN3021A-32-15-CS	JX-DIN3021A-32-15-SS							
34	JX-DIN3021A-34-15-65MN	JX-DIN3021A-34-15-CS	JX-DIN3021A-34-15-SS							
35	JX-DIN3021A-35-15-65MN	JX-DIN3021A-35-15-CS	JX-DIN3021A-35-15-SS							
36	JX-DIN3021A-36-15-65MN	JX-DIN3021A-36-15-CS	JX-DIN3021A-36-15-SS							
37	JX-DIN3021A-37-15-65MN	JX-DIN3021A-37-15-CS	JX-DIN3021A-37-15-SS							
38	JX-DIN3021A-38-15-65MN	JX-DIN3021A-38-15-CS	JX-DIN3021A-38-15-SS							
40	JX-DIN3021A-40-15-65MN	JX-DIN3021A-40-15-CS	JX-DIN3021A-40-15-SS							
41	JX-DIN3021A-41-15-65MN	JX-DIN3021A-41-15-CS	JX-DIN3021A-41-15-SS							
42	JX-DIN3021A-42-15-65MN	JX-DIN3021A-42-15-CS	JX-DIN3021A-42-15-SS							
43	JX-DIN3021A-43-15-65MN	JX-DIN3021A-43-15-CS	JX-DIN3021A-43-15-SS							
44	JX-DIN3021A-44-15-65MN	JX-DIN3021A-44-15-CS	JX-DIN3021A-44-15-SS							
46	JX-DIN3021A-46-15-65MN	JX-DIN3021A-46-15-CS	JX-DIN3021A-46-15-SS							
47	JX-DIN3021A-47-15-65MN	JX-DIN3021A-47-15-CS	JX-DIN3021A-47-15-SS							
49	JX-DIN3021A-49-15-65MN	JX-DIN3021A-49-15-CS	JX-DIN3021A-49-15-SS							
50	JX-DIN3021A-50-15-65MN	JX-DIN3021A-50-15-CS	JX-DIN3021A-50-15-SS							
51	JX-DIN3021A-51-15-65MN	JX-DIN3021A-51-15-CS	JX-DIN3021A-51-15-SS							
53	JX-DIN3021A-53-15-65MN	JX-DIN3021A-53-15-CS	JX-DIN3021A-53-15-SS							
55	JX-DIN3021A-55-15-65MN	JX-DIN3021A-55-15-CS	JX-DIN3021A-55-15-SS							
58	JX-DIN3021A-58-15-65MN	JX-DIN3021A-58-15-CS	JX-DIN3021A-58-15-SS							
61	JX-DIN3021A-61-15-65MN	JX-DIN3021A-61-15-CS	JX-DIN3021A-61-15-SS							
64	JX-DIN3021A-64-15-65MN	JX-DIN3021A-64-15-CS	JX-DIN3021A-64-15-SS							
67	JX-DIN3021A-67-15-65MN	JX-DIN3021A-67-15-CS	JX-DIN3021A-67-15-SS							

DIN3021-1(B)-1999 (C=12) Spring clamp hose clamp type B

A=9mm, B=10mm, E=7mm, G=5.8mm

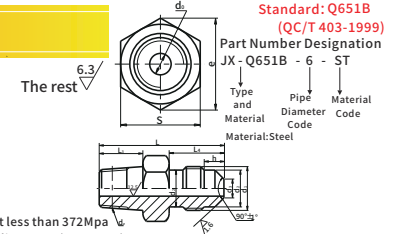
D=12-25, H=40mm D=26-47, H=60mm D=49-75, H=72mm D=80-90, H=110mm

AUTOMOTIVE FASTENERS SERIES

Q651B Flared Couplings - Male - Body



Material: Steel, tensile strength not less than 372Mpa
 Thread: tolerance 6g, others according to GB/T 196, GB/T 197
 Surface Treatment: Zinc Passivated
 Remarks: There should be no cracks, pores, burrs, sharp edges, rust spots and other defects that affect use
 Acceptance inspection: According to GB/T 90.1, the thread size AQL=1.5, the flare end size AQL=1.5, and the other sizes AQL=4.0.
 When there are special requirements, both parties shall negotiate.
 Material: Carbon Steel, Stainless Steel

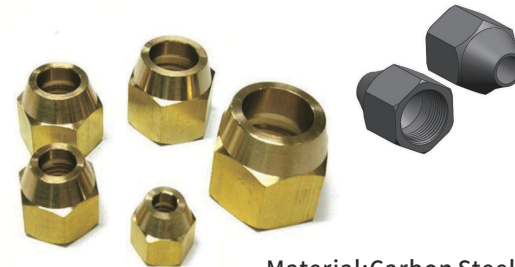


Standard: Q651B (QC/T 403-1999)
 Part Number Designation
 JX-Q651B - 6 - ST
 Type and Material: Steel
 Pipe Diameter Code: 6
 Material Code: ST

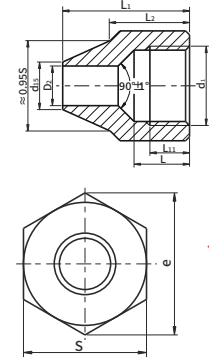
Part Number Designation
 JX-Q651B - 6 - SS
 Type and Material: Stainless steel
 Pipe Diameter Code: 6
 Material Code: SS

Pipe Dia D ₀	P/N		Thread Size		S		d ₀	d ₂	d ₃	L ₄	h	L	L ₃	e
	Steel	Stainless steel	d ₂	d ₁	Basic size	Limit deviation								
5	JX-Q651B-5-ST	JX-Q651B-5-SS	NPT 1/8	M10X1	13	+0 -0.27	3.5	8.4	4.3	12.5	4.5	28.5	10	15
6	JX-Q651B-6-ST	JX-Q651B-6-SS	NPT 1/8	M12X1.5	16	+0 -0.27	4	10	4.8	15.7	5.5	31.7	15	18.5
8	JX-Q651B-8-ST	JX-Q651B-8-SS	NPT 1/4	M14X1.5	18	+0 -0.33	6	11.7	7	18	6	39.5	15	20.8
10	JX-Q651B-10-ST	JX-Q651B-10-SS	NPT 1/4	M16X1.5	21	+0 -0.33	8	13.7	9	19	6	40.5	15	20.8
12	JX-Q651B-12-ST	JX-Q651B-12-SS	NPT 3/8	M18X1.5	21	+0 -0.33	10	15.7	11	19	6	41.5	15	24.2

Q652B Flared Couplings - Style B nut



Material: Carbon Steel, Brass, Stainless Steel



Standard: Q652B (GB/T 5648-1985)
 Part Number Designation
 JX-Q652B - 6 - ST
 Type and Material: Steel
 Pipe Diameter Code: 6
 Material Code: ST

Part Number Designation
 JX-Q652B - 6 - SS
 Type and Material: Stainless steel
 Pipe Diameter Code: 6
 Material Code: SS

Pipe Dia D ₀	P/N		Thread Size		D ₂		d ₁₅	L ₁	L ₂	L	L ₁₁	e	S
	Steel	Stainless steel	d ₁	Basic size	Limit deviation								
5	JX-Q652B-5-ST	JX-Q652B-5-SS	M10X1	5	+0.2 -0.1	9	7	5	16	10	15	13	
6	JX-Q652B-6-ST	JX-Q652B-6-SS	M12X1.5	6	+0.2 -0.1	9	9.5	7	16	10	17.3	15	
8	JX-Q652B-8-ST	JX-Q652B-8-SS	M14X1.5	8	+0.2 -0.1	11	11	8	20	12	20.8	18	
10	JX-Q652B-10-ST	JX-Q652B-10-SS	M16X1.5	10	+0.2 -0.1	14	11.5	8.5	26	14	24.2	21	
12	JX-Q652B-12-ST	JX-Q652B-12-SS	M18X1.5	12	+0.2 -0.1	16	11.5	8.5	28	16	27.7	24	