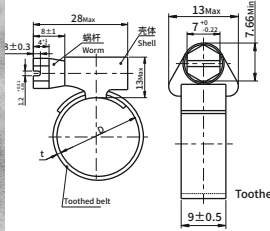


# JX STAMPING FASTENERS SERIES

## Q675 Spiral Coupling-Pressure Type - Type DG And DN



**Standard: Q675**  
(QC/T 620-1999)  
Part Number Designation  
JX - Q675 - 45 - ST  
Type and Material: Carbon Steel  
Pipe Diameter Code: 45  
Material Code: ST

Part Number Designation  
JX - Q675 - 45 - SS  
Type and Material: Stainless steel  
Pipe Dia Code: 45  
Material Code: SS

Material: 2Cr18Ni9, 06Cr19Ni10N, 06Cr17Ni12Mo2, M135  
Surface treatment: bright treatment, zinc passivation, Fe/Zn12  
Thread: worm thread is right hand  
Surface defects: The longitudinal edge of the toothed belt should be rounded or rolled, and there should be no sharp edges on the inner side to avoid scratching the cooking tube.  
Acceptance and packaging: According to GB/T 90.1, GB/T90.2, AQL=1.5 of the size.  
When there are special requirements, it shall be negotiated by both parties.

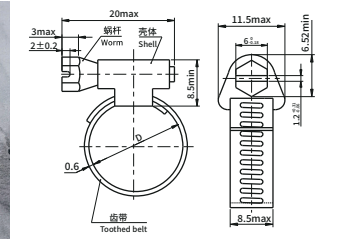
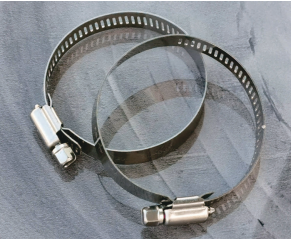
Material	Toothed belt, Shell	1Cr18Ni9, 0Cr19Ni9, 0Cr17Ni12Mo2
	Worm	ML35



Remark: The clamped range of more than 160mm is in a tight range of 20mm, and increases in order of 10mm.

Clamping range D mm	P/N		Tooth thickness t mm	Tighten torque N·m Max	Ensure torque N·m Max	Sealing pressure Mpa
	Carbon Steel	Stainless Steel				
8~12	JX-Q675-8-12-ST	JX-Q675-8-12-SS	0.4~0.6	2	2.4	1.4
10~16	JX-Q675-10-16-ST	JX-Q675-10-16-SS				
12~22	JX-Q675-12-22-ST	JX-Q675-12-22-SS				
16~27	JX-Q675-16-27-ST	JX-Q675-16-27-SS				
23~35	JX-Q675-23-35-ST	JX-Q675-23-35-SS				
30~45	JX-Q675-30-45-ST	JX-Q675-30-45-SS				
32~50	JX-Q675-32-50-ST	JX-Q675-32-50-SS				
40~60	JX-Q675-40-60-ST	JX-Q675-40-60-SS				
50~70	JX-Q675-50-70-ST	JX-Q675-50-70-SS				
60~80	JX-Q675-60-80-ST	JX-Q675-60-80-SS				
70~90	JX-Q675-70-90-ST	JX-Q675-70-90-SS				
80~100	JX-Q675-80-100-ST	JX-Q675-80-100-SS				
90~110	JX-Q675-90-110-ST	JX-Q675-90-110-SS				
100~120	JX-Q675-100-120-ST	JX-Q675-100-120-SS				
110~130	JX-Q675-110-130-ST	JX-Q675-110-130-SS				
120~140	JX-Q675-120-140-ST	JX-Q675-120-140-SS				
130~150	JX-Q675-130-150-ST	JX-Q675-130-150-SS				
140~160	JX-Q675-140-160-ST	JX-Q675-140-160-SS				

## Q676B Clamps With Worm Gear Drive, Dhapes A and B



**Standard: Q676B**  
(QC/T 619-1999)  
Part Number Designation  
JX - Q676B - 25 - ST  
Type and Material: Carbon Steel  
Pipe Diameter Code: 25  
Material Code: ST

Part Number Designation  
JX - Q676B - 25 - SS  
Type and Material: Stainless steel  
Pipe Dia Code: 25  
Material Code: SS

Material: 12Cr18Ni9, 06Cr19Ni10N, 06Cr17Ni12Mo2, M135  
Finish: Bright finish, Zinc passivated, Fe/Zn12  
Thread: Worm thread is right-handed.  
Surface Defects: The hoop should be free of burrs, cracks and other defects that would affect its use.  
Acceptance and packaging: According to GB/T 90.1, GB/T90.2, AQL=1.5 of the size.  
When there are special requirements, it shall be negotiated by both parties.

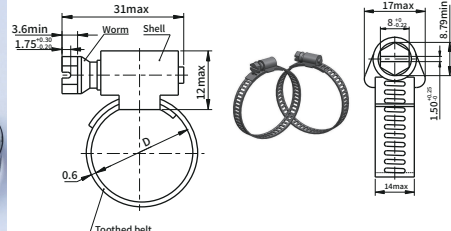
Material	Toothed belt, Shell	1Cr18Ni9, 0Cr19Ni9, 0Cr17Ni12Mo2
	Worm	ML35

Clamping range D	P/N				
	8~10	10~12	12~16	16~25	19~29
P/N	JX-Q676B-10	JX-Q676B-12	JX-Q676B-16	JX-Q676B-25	JX-Q676B-29

Unit:mm

# JX STAMPING FASTENERS SERIES

## Q676 Clamps With Worm Gear Drive, Dhapes A and B



**Standard: Q676**  
(QC/T 619-1999)  
Part Number Designation  
JX - Q676 - 32 - ST  
Type and Material: Steel  
Pipe Diameter Code: 32  
Material Code: ST

Part Number Designation  
JX - Q676 - 32 - SS  
Type and Material: Stainless steel  
Pipe Dia Code: 32  
Material Code: SS

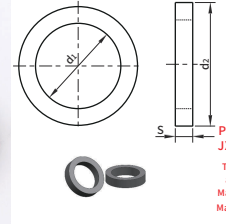
Material: 12Cr18Ni9, 06Cr19Ni10N, 06Cr17Ni12Mo2, M135  
Finish: Bright finish, Zinc passivated, Fe/Zn12  
Thread: Worm thread is right-handed,  
Surface Defects: The hoop should be free of burrs, cracks and other defects that would affect its use.  
Acceptance and packaging: According to GB/T 90.1, GB/T90.2, AQL=1.5 of the size.  
When there are special requirements, it shall be negotiated by both parties.

Material	Toothed belt, Shell	1Cr18Ni9, 0Cr19Ni9, 0Cr17Ni12Mo2
	Worm	ML35

Material: 12Cr18Ni9, 06Cr19Ni10N, 06Cr17Ni12Mo2, M135  
Finish: Bright finish, Zinc passivated, Fe/Zn12  
Thread: Worm thread is right-handed,  
Surface Defects: The hoop should be free of burrs, cracks and other defects that would affect its use.  
Acceptance and packaging: According to GB/T 90.1, GB/T90.2, AQL=1.5 of the size.  
When there are special requirements, it shall be negotiated by both parties.

Clamping range D	14~27	17~32	19~38	21~45	27~50	33~57	39~64	45~70
P/N	JX-Q676-27	JX-Q676-32	JX-Q676-38	JX-Q676-45	JX-Q676-50	JX-Q676-57	JX-Q676-64	JX-Q676-70
Clamping range D	52~76	58~83	65~89	17~95	78~102	84~108	90~114	103~127
P/N	JX-Q676-76	JX-Q676-83	JX-Q676-89	JX-Q676-95	JX-Q676-102	JX-Q676-108	JX-Q676-114	JX-Q676-127
Clamping range D	117~140	130~152	141~165	157~178				
P/N	JX-Q676-140	JX-Q676-152	JX-Q676-165	JX-Q676-178				

## Q723 Sealing washer



Part Number Designation  
JX - Q723 - 22 - ST  
Type and Material: Steel  
Thread Dia Code: 22  
Material Code: ST

Part Number Designation  
JX - Q723 - 22 - B  
Type and Material: Brass  
Thread Dia Code: 22  
Material Code: B

Part Number Designation  
JX - Q723 - 22 - AL  
Type and Material: Aluminum  
Thread Dia Code: 22  
Material Code: AL

Standard: Q723 (QC/T 638-2000)  
Part Number Designation  
JX - Q723 - 22 - SS  
Type and Material: Stainless steel  
Thread Dia Code: 22  
Material Code: SS

Material: Carbon Steel, Carbon Steel, Stainless Steel, Brass

Nominal size d <sub>0</sub>	P/N				Basic size	Limit deviation	d <sub>1</sub>		d <sub>2</sub>		S					
	Steel	Aluminum	Brass	Stainless steel			Basic size	Limit deviation	Basic size	Limit deviation	Basic size	Limit deviation				
6	JX-Q723-06-ST	JX-Q723-06-AL	JX-Q723-06-B	JX-Q723-06-SS	6.2	±0.110	10.2	±0.135								
8	JX-Q723-08-ST	JX-Q723-08-AL	JX-Q723-08-B	JX-Q723-08-SS	8.2		12.2									
10	JX-Q723-10-ST	JX-Q723-10-AL	JX-Q723-10-B	JX-Q723-10-SS	10.2		14.2									
12	JX-Q723-12-ST	JX-Q723-12-AL	JX-Q723-12-B	JX-Q723-12-SS	12.2	±0.135	16.2		±0.165							
14	JX-Q723-14-ST	JX-Q723-14-AL	JX-Q723-14-B	JX-Q723-14-SS	14.2		18.2									
16	JX-Q723-16-ST	JX-Q723-16-AL	JX-Q723-16-B	JX-Q723-16-SS	16.2		22.2									
18	JX-Q723-18-ST	JX-Q723-18-AL	JX-Q723-18-B	JX-Q723-18-SS	18.2	±0.165	24.2			±0.195						
20	JX-Q723-20-ST	JX-Q723-20-AL	JX-Q723-20-B	JX-Q723-20-SS	20.2		27.2									
22	JX-Q723-22-ST	JX-Q723-22-AL	JX-Q723-22-B	JX-Q723-22-SS	22.2		30.2									
24	JX-Q723-24-ST	JX-Q723-24-AL	JX-Q723-24-B	JX-Q723-24-SS	24.2	±0.165	33.2				2	±0.2				
27	JX-Q723-27-ST	JX-Q723-27-AL	JX-Q723-27-B	JX-Q723-27-SS	27.2		36.2									
30	JX-Q723-30-ST	JX-Q723-30-AL	JX-Q723-30-B	JX-Q723-30-SS	30.2		39.2									
33	JX-Q723-33-ST	JX-Q723-33-AL	JX-Q723-33-B	JX-Q723-33-SS	33.2	±0.195	42.2	±0.230								
36	JX-Q723-36-ST	JX-Q723-36-AL	JX-Q723-36-B	JX-Q723-36-SS	36.2		45.2									
39	JX-Q723-39-ST	JX-Q723-39-AL	JX-Q723-39-B	JX-Q723-39-SS	39.2		48.2									
42	JX-Q723-42-ST	JX-Q723-42-AL	JX-Q723-42-B	JX-Q723-42-SS	42.2	±0.195	52.3		±0.230							
45	JX-Q723-45-ST	JX-Q723-45-AL	JX-Q723-45-B	JX-Q723-45-SS	45.2		56.3									
48	JX-Q723-48-ST	JX-Q723-48-AL	JX-Q723-48-B	JX-Q723-48-SS	48.2		60.3									
52	JX-Q723-52-ST	JX-Q723-52-AL	JX-Q723-52-B	JX-Q723-52-SS	52.3	±0.230	64			±0.230						
56	JX-Q723-56-ST	JX-Q723-56-AL	JX-Q723-56-B	JX-Q723-56-SS	56.3		68									
60	JX-Q723-60-ST	JX-Q723-60-AL	JX-Q723-60-B	JX-Q723-60-SS	60.3		72									