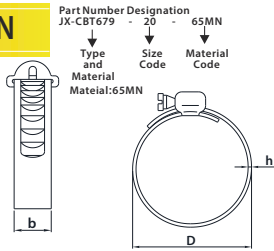


STAMPING FASTENERS SERIES

Spiral Coupling-Pressure Type - Type DG And DN

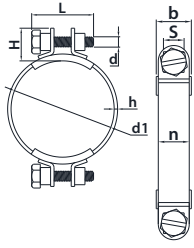


material:65MN, Carbon steel, Stainless steel

Unit:mm

Size	P/N			D	Hose Inner Dia	PN MPa	Strap		Weight ≈kg
	65MN	Carbon steel	Stainless steel				b	h (DN, DG)	
20	JX-CBT679-20-65MN	JX-CBT679-20-CS	JX-CBT679-20-SS	11~20	4~10	1	12	0.8	0.021
30	JX-CBT679-30-65MN	JX-CBT679-30-CS	JX-CBT679-30-SS	21~30	12~20				0.025
40	JX-CBT679-40-65MN	JX-CBT679-40-CS	JX-CBT679-40-SS	31~40	22~28				0.029
50	JX-CBT679-50-65MN	JX-CBT679-50-CS	JX-CBT679-50-SS	41~50	30~38			0.032	
65	JX-CBT679-65-65MN	JX-CBT679-65-CS	JX-CBT679-65-SS	51~65	40~48			0.035	
75	JX-CBT679-75-65MN	JX-CBT679-75-CS	JX-CBT679-75-SS	61~75	50~63			0.04	
90	JX-CBT679-90-65MN	JX-CBT679-90-CS	JX-CBT679-90-SS	76~90	65~75			0.048	
105	JX-CBT679-105-65MN	JX-CBT679-105-CS	JX-CBT679-105-SS	91~105	80~90			0.056	

DIN3017-2-2002 Hose Clamps-Part 2:Clamps With Fastening Lugs-Type B2



Part Number Designation
JX-DIN3017 - M6 - 65MN
Type and Material: 65MN
Size Code: M6
Material Code: 65MN

Part Number Designation
JX-DIN3017 - M6 - CS
Type and Material: Carbon steel
Size Code: M6
Material Code: CS

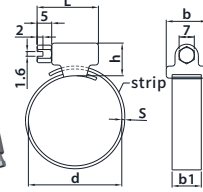
Material:65MN, Carbon steel, Stainless steel Unit:mm

Size	P/N			n		b		H		h			S	d1	Screw Cap Shape
	65MN	Carbon steel	Stainless steel	nom.	max.	nom.	max.	nom.	max.	nom.	max.	max.			
M6	JX-DIN3017-M6-65MN	JX-DIN3017-M6-CS	JX-DIN3017-M6-SS	15	15.3	14.7	17	17	0.6	0.8	0.5	40	10	60~120	③
M8	JX-DIN3017-M8-65MN	JX-DIN3017-M8-CS	JX-DIN3017-M8-SS	20	20.3	19.7	22	20	0.9	1.1	0.8	46	13	70~160	③
M10	JX-DIN3017-M10-65MN	JX-DIN3017-M10-CS	JX-DIN3017-M10-SS	25	25.3	24.7	27	22	1.1	1.3	1	55	16	90~250	④
M12	JX-DIN3017-M12-65MN	JX-DIN3017-M12-CS	JX-DIN3017-M12-SS	30	30.3	29.7	32	29	2.5	2.7	2.4	75	18	80~350	⑤

- The clamping position does not need to correspond to the figure, only the specified size.
- Hexagon screws according to DIN EN ISO 4017, but with grooves according to DIN 962.
- Hexagon screws according to DIN EN ISO 4017.
- a) Abbreviation of hose clamp material W1: screw: strength grade 8.8 according to DIN EN ISO 898-1; Pipe straps, connections and jaws: steel with minimum tensile strength of 400 MPa (grade to be selected by the manufacturer)
- b) Abbreviation W3 of hose clamp material: screw: steel group A2-70 according to DIN EN ISO 3506-1; Pipe clamp, connector and clamping claw: steel grade 1.4016 according to DIN EN 10088-2 or equivalent corrosion-resistant steel (the grade is selected by the manufacturer)
- c) Abbreviation W4 of hose clamp material: screw: steel group A2-70 according to DIN EN ISO 3506-1; Pipe clamp, connector and clamping claw: steel grade 1.4301 according to DIN EN 10088-2 or equivalent corrosion-resistant steel (the grade is selected by the manufacturer)
- d) Abbreviation W5 of hose clamp material: screw: steel group A2-70 according to DIN EN ISO 3506-1; Pipe clamp, connector and clamping claw: steel grades 1.4401, 1.4436, 1.4571 or equivalent corrosion-resistant steel conforming to DIN EN 10088-2 - applicable to seawater and non-magnetic (the grade is selected by the manufacturer)
- e) Other agreement materials; The material designation must be indicated, not the abbreviation.

STAMPING FASTENERS SERIES

JB/T8870-1999 Hose Clamps



Part Number Designation
JX-JBT8870 - 12 - 65MN
Type and Material: 65MN
Size Code: 12
Material Code: 65MN

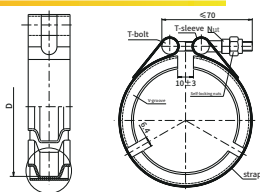
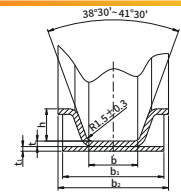
Part Number Designation
JX-JBT8870 - 12 - CS
Type and Material: Carbon steel
Size Code: 12
Material Code: CS

Material:65MN, Carbon steel, Stainless steel Unit:mm

Size	P/N			d		S	L	b1	b	h
	65MN	Carbon steel	Stainless steel	min.	max.					
12	JX-JBT8870-12-65MN	JX-JBT8870-12-CS	JX-JBT8870-12-SS	8	12	0.45~0.8	20	10	12	12
16	JX-JBT8870-16-65MN	JX-JBT8870-16-CS	JX-JBT8870-16-SS	10	16					
20	JX-JBT8870-20-65MN	JX-JBT8870-20-CS	JX-JBT8870-20-SS	12	20					
25	JX-JBT8870-25-65MN	JX-JBT8870-25-CS	JX-JBT8870-25-SS	16	25	25	25	12.8	16	14
32	JX-JBT8870-32-65MN	JX-JBT8870-32-CS	JX-JBT8870-32-SS	20	32					
40	JX-JBT8870-40-65MN	JX-JBT8870-40-CS	JX-JBT8870-40-SS	25	40					
50	JX-JBT8870-50-65MN	JX-JBT8870-50-CS	JX-JBT8870-50-SS	32	50	0.5~1	33	12.8	16	14
60	JX-JBT8870-60-65MN	JX-JBT8870-60-CS	JX-JBT8870-60-SS	40	60					
70	JX-JBT8870-70-65MN	JX-JBT8870-70-CS	JX-JBT8870-70-SS	50	70					
80	JX-JBT8870-80-65MN	JX-JBT8870-80-CS	JX-JBT8870-80-SS	60	80	100	100	12.8	16	14
90	JX-JBT8870-90-65MN	JX-JBT8870-90-CS	JX-JBT8870-90-SS	70	90					
100	JX-JBT8870-100-65MN	JX-JBT8870-100-CS	JX-JBT8870-100-SS	80	100					
110	JX-JBT8870-110-65MN	JX-JBT8870-110-CS	JX-JBT8870-110-SS	90	110	100	120	12.8	16	14
120	JX-JBT8870-120-65MN	JX-JBT8870-120-CS	JX-JBT8870-120-SS	100	120					
130	JX-JBT8870-130-65MN	JX-JBT8870-130-CS	JX-JBT8870-130-SS	110	130					
140	JX-JBT8870-140-65MN	JX-JBT8870-140-CS	JX-JBT8870-140-SS	120	140	120	150	12.8	16	14
150	JX-JBT8870-150-65MN	JX-JBT8870-150-CS	JX-JBT8870-150-SS	130	150					
160	JX-JBT8870-160-65MN	JX-JBT8870-160-CS	JX-JBT8870-160-SS	140	160					

Q670 Flange Coupling Connectors

Standard: Q670 (QC/T 927-2013)



Part Number Designation
JX-Q670 - 60 - SS
Type and Material: Stainless steel
Size Range Code: 60
Material Code: SS

Part Number Designation
JX-Q670 - 60 - ST
Type and Material: Steel
Size Range Code: 60
Material Code: ST

T-bolt = Lock Nut + Band, V Slot, T-Sleeve and Cap
Material: 12C13TW, 12C13N8, 10C12T
MoThread: tolerance eg. 6H, standard GB/T 3098.1, GB/T 3098.9
Surface treatment: electroless zinc flake coating, polished
Surface Defects: No sharp corners, burrs, cracks, wrinkles and other defects affecting use
Corrosion resistance: The flange connector should be disassembled into parts and subjected to a salt spray test for 480h. After the test, there is no white, gray-black and other corrosive substances on the surface.
Assembly torque: Determine the assembly torque according to the sealing medium, sealing packing, and working conditions, but should not exceed the specified assembly torque.
Supply status: When supplying, the friction pair of the cuff is allowed to be coated with a small amount of lubricating oil, and the lock nut is at the end of the T-bolt, and should be locked and should not fall off acceptance inspection GB/T 196.1, AQL=1.5 for the angle of the V groove in the band, V-groove, T-sleeve and cap, and AQL=2.5 for other dimensions. When there are special requirements, it shall be negotiated by both parties.

Size Range	P/N		Size for order	Gripping Range	b	b1		b2		h		t		t1	Thread Size
	Steel	Stainless steel				max	min	max	min	max	min	max	min		
60~100	JX-Q670-60-100-ST	JX-Q670-60-100-SS	1	±0.5	11	22.3	21.7	25	7.1	6.9	1.5	1.1	1.1	0.8	M6
102~150	JX-Q670-102-150-ST	JX-Q670-102-150-SS	2	±1.0	11	22.3	21.7	25	7.1	6.9	1.5	1.1	1.1	0.8	M6
153~201	JX-Q670-153-201-ST	JX-Q670-153-201-SS	3	±1.5	14	25.3	24.7	36	10.1	9.9	2.2	1.8	1.8	1.5	M6