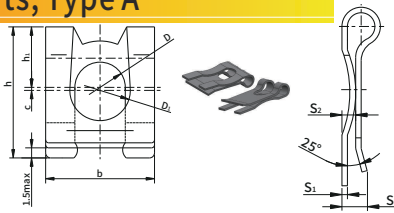


JX STAMPING AUTO FASTENERS SERIES

Q439 Retainers For Shafts, Type A



Material: 65Mn, Spring Steel 50#, SUS304, 316 (A2, A4) high-quality steel;
Surface treatment: natural color hardening or phosphating
Blackening, hydrogen removal, galvanizing, dacromet, electroplating, etc.

Standard: Q439
(QC/T 889-2011)

Part Number Designation
JX-Q439 - 20 - SS

Type and Material Code
Material: Stainless Steel

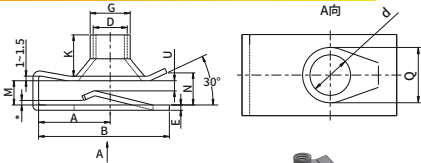
Part Number Designation
JX-Q439 - 20 - 65Mn

Type and Material Code
Material: 65Mn

Unit:mm

Shaft diameter d ₀	P/N		D	D ₁	b	h	h ₁	S	S ₁	S ₂	c
	65Mn	Stainless steel									
4	JX-Q439-4-65Mn	JX-Q439-4-SS	3.20~3.35	4	6.9~7.2	8.3~8.7	3.8~4.2	1.9~2.5	0.25~0.30	0.64~0.89	0.3
5	JX-Q439-5-65Mn	JX-Q439-5-SS	4.00~4.15	5	8.9~9.2	10.6~11.0	4.8~5.2	2.5~3.1	0.30~0.35	0.74~0.99	0.3
6	JX-Q439-6-65Mn	JX-Q439-6-SS	5.00~5.15	6	10.9~11.2	12.6~13.0	5.8~6.2	2.5~3.1	0.30~0.35	0.74~0.99	0.3
8	JX-Q439-8-65Mn	JX-Q439-8-SS	6.00~6.15	8	13.9~14.2	16.3~16.7	7.8~8.2	3.7~4.3	0.40~0.45	0.94~1.19	0.4
10	JX-Q439-10-65Mn	JX-Q439-10-SS	8.00~8.15	10	17.9~18.2	21.8~22.2	9.8~10.2	4.7~5.3	0.45~0.50	1.05~1.30	0.4
12	JX-Q439-12-65Mn	JX-Q439-12-SS	9.00~9.15	12	21.9~22.2	25.3~25.7	11.8~12.2	4.7~5.3	0.50~0.55	1.15~1.40	0.5
14	JX-Q439-14-65Mn	JX-Q439-14-SS	10.00~10.15	14	24.9~25.2	29.8~30.2	13.3~13.7	5.0~5.6	0.55~0.60	1.25~1.50	0.5
16	JX-Q439-16-65Mn	JX-Q439-16-SS	12.00~12.15	16	27.9~28.2	33.8~34.2	15.8~16.2	5.5~6.1	0.60~0.65	1.35~1.60	0.5

Q312 Spring Nuts - Type B



Material: 65Mn, Spring Steel 50#, SUS304, 316 (A2, A4) high-quality steel;
Surface treatment: natural color hardening or phosphating
Blackening, hydrogen removal, galvanizing, dacromet, electroplating, etc.

Standard: Q312
(QC/T 608-1999)

Part Number Designation
JX-Q312 - M6 - 65Mn

Type and Material Code
Thread Code
Material Code
Material: 65Mn

Part Number Designation
JX-Q312 - M6 - SS

Type and Material Code
Thread Code
Material Code
Material: Stainless Steel

Standard: Q312B.Q/T855-2011

Unit:mm

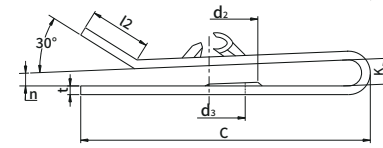
Size D	Sheet Thickness	P/N	A	B	C	H		E	d		G	K		M		N	U	Q
						max	min		max	min		min	max	min	max			
M4	0.6~3.8	JX-Q312-M4X10X10.5	10.0	17.0	10.5	13.0	12.0	0.6	6.1	6.0	8.0	5.0	6.0	4.0	4.5	4.2	0.4	7.8
M5	0.6~3.8	JX-Q312-M5X11.5X11.5	11.5	19.5	11.5	14.0	13.0	0.7	6.9	6.8	9.0	5.0	6.0	4.0	4.5	4.2	0.4	7.8
M6	0.8~4.0	JX-Q312-M6X13.5X12.5	13.5	23.5	12.5	15.0	14.0	0.8	7.9	7.8	11.0	5.5	6.5	4.2	5.2	4.4	0.6	9.4
M8	0.8~4.0	JX-Q312-M8X14.5X14.2	14.5	25.0	14.2	17.5	16.5	1.0	9.4	9.3	12.0	7.5	9.0	4.2	5.2	4.4	0.6	10.8
M10	1.5~5.5	JX-Q312-M10X18.5X17.5	18.5	32.5	17.5	25.0	23.0	1.4	11.7	11.6	15.5	9.0	10.5	5.7	6.7	6.0	1.3	14.2

Remark:
1.*The gap is less than the thickness of the steel plate 0.15mm;
2.Q is the punching hole on the blank before forming.

JX STAMPING FASTENERS SERIES

Q397 Spring slice nuts

Standard: Q397
(QC/T 330-1999)



Part Number Designation
JX-Q397 - ST4.8 - 65Mn

Type and Material Code
Size Code
Material Code
Material: 65Mn

Part Number Designation
JX-Q397 - ST4.8 - SS

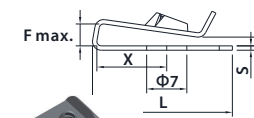
Type and Material Code
Size Code
Material Code
Material: Stainless Steel

Unit:mm

Material: 65Mn, Carbon steel, Stainless steel

Self-tapping Screw Size	Pitch	P/N		d ₂	d ₃	t		C	K	n
		65Mn	Stainless steel			Basic Size	Tolerance			
ST3.9	1.4	JX-Q397-ST3.9-65Mn	JX-Q397-ST3.9-SS	6.8	5	0.4	+0 -0.04	16	1.8	0~0.6
								20	1.8	0~0.6
								25	1.8	0.6~1.3
ST4.8	1.6	JX-Q397-ST4.8-65Mn	JX-Q397-ST4.8-SS	7.8	6	0.6	+0 -0.05	20	1.8	0~0.6
								25	1.8	0.6~1.3
								28	1.8	0.6~1.3
ST6.3	1.8	JX-Q397-ST6.3-65Mn	JX-Q397-ST6.3-SS	8.8	7	0.8	+0 -0.07	25	2.8	0~0.6
								28	2.8	0.6~1.3
								32	2.8	0.6~1.3

DIN34818-2002 Sheet Spring Nuts With Tapping Screw Thread



Part Number Designation
JX-DIN34818 - ST2.9 - 16 - 65Mn

Type and Material Code
Size Code
Length Code
Material Code
Material: 65Mn

Material: 65Mn, Carbon steel, Stainless steel

Part Number Designation
JX-DIN34818 - ST2.9 - 16 - CS

Type and Material Code
Size Code
Length Code
Material Code
Material: Carbon steel

Unit:mm

Size	P/N			S			B			L			X			F		
	65Mn	Carbon steel	Stainless steel	nom.	max.	min.	nom.	max.	min.	nom.	max.	min.	nom.	max.	min.	Short Type	High Type	
ST2.9	JX-DIN34818-ST2.9-16-65Mn	JX-DIN34818-ST2.9-16-CS	JX-DIN34818-ST2.9-16-SS	0.5	0.57	0.43	11	11.3	10.7	16	16.3	15.7	8	8.3	7.7	2.5	0.5	2.5
ST3.5	JX-DIN34818-ST3.5-17-65Mn	JX-DIN34818-ST3.5-17-CS	JX-DIN34818-ST3.5-17-SS	0.5	0.57	0.43	11	11.3	10.7	17	17.3	16.7	8	8.3	7.7	2.5	0.5	2.5
ST4.2	JX-DIN34818-ST4.2-20-65Mn	JX-DIN34818-ST4.2-20-CS	JX-DIN34818-ST4.2-20-SS	0.6	0.67	0.53	11	11.3	10.7	20	20.3	19.7	9	9.3	8.7	2.5	0.5	2.5
	JX-DIN34818-ST4.2-24-65Mn	JX-DIN34818-ST4.2-24-CS	JX-DIN34818-ST4.2-24-SS	0.6	0.67	0.53	11	11.3	10.7	24	24.3	23.7	13	13.3	12.7	2.5	0.5	2.5
ST4.8	JX-DIN34818-ST4.8-20-65Mn	JX-DIN34818-ST4.8-20-CS	JX-DIN34818-ST4.8-20-SS	0.7	0.77	0.63	15	15.3	14.7	20	20.3	19.7	9	9.3	8.7	2.5	0.5	2.5
	JX-DIN34818-ST4.8-24-65Mn	JX-DIN34818-ST4.8-24-CS	JX-DIN34818-ST4.8-24-SS	0.7	0.77	0.63	15	15.3	14.7	24	24.3	23.7	13	13.3	12.7	2.5	0.5	2.5
ST6.3	JX-DIN34818-ST6.3-20-65Mn	JX-DIN34818-ST6.3-20-CS	JX-DIN34818-ST6.3-20-SS	0.7	0.77	0.63	15	15.3	14.7	28	28.3	27.7	17	17.3	16.7	2.5	0.5	2.5
	JX-DIN34818-ST6.3-24-65Mn	JX-DIN34818-ST6.3-24-CS	JX-DIN34818-ST6.3-24-SS	0.7	0.77	0.63	16	16.3	15.7	20	20.3	19.7	9	9.3	8.7	2.5	0.5	2.5
ST6.3	JX-DIN34818-ST6.3-24-65Mn	JX-DIN34818-ST6.3-24-CS	JX-DIN34818-ST6.3-24-SS	0.7	0.77	0.63	16	16.3	15.7	24	24.3	23.7	13	13.3	12.7	2.5	0.5	2.5
	JX-DIN34818-ST6.3-28-65Mn	JX-DIN34818-ST6.3-28-CS	JX-DIN34818-ST6.3-28-SS	0.7	0.77	0.63	16	16.3	15.7	28	28.3	27.7	17	17.3	16.7	2.5	0.5	2.5