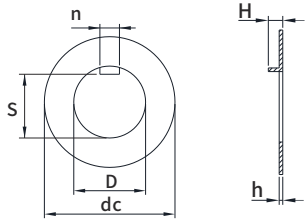


JX STAMPING FASTENERS SERIES

DIN462 Machine Tools; Internal Tab Washers For Slotted Round Nuts In Conformity With DIN 1804



Part Number Designation
JX-DIN462 - D8 - 65MN

Type and Material: 65MN
Size Code: D8
Material Code: 65MN

Part Number Designation
JX-DIN462 - D8 - SK5

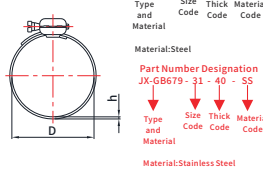
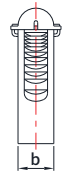
Type and Material: SK5
Size Code: D8
Material Code: SK5

Material: 65MN, SK5, SK7, Stainless steel

Unit: mm

Size D	P/N				dc	h	n	S	H
	65MN	Sk5	Sk7	Stainless steel					
8	JX-DIN462-D8-65MN	JX-DIN462-D8-SK5	JX-DIN462-D8-SK7	JX-DIN462-D8-SS	20	0.8	3	5.9	2.5
10	JX-DIN462-D10-65MN	JX-DIN462-D10-SK5	JX-DIN462-D10-SK7	JX-DIN462-D10-SS	25	0.8	4	7.4	3
12	JX-DIN462-D12-65MN	JX-DIN462-D12-SK5	JX-DIN462-D12-SK7	JX-DIN462-D12-SS	28	0.8	5	9.3	3
14	JX-DIN462-D14-65MN	JX-DIN462-D14-SK5	JX-DIN462-D14-SK7	JX-DIN462-D14-SS	30	0.8	5	11.4	3
16	JX-DIN462-D16-65MN	JX-DIN462-D16-SK5	JX-DIN462-D16-SK7	JX-DIN462-D16-SS	32	1	5	13.5	3
18	JX-DIN462-D18-65MN	JX-DIN462-D18-SK5	JX-DIN462-D18-SK7	JX-DIN462-D18-SS	34	1	6	15.4	4
20	JX-DIN462-D20-65MN	JX-DIN462-D20-SK5	JX-DIN462-D20-SK7	JX-DIN462-D20-SS	36	1	6	17.5	4
22	JX-DIN462-D22-65MN	JX-DIN462-D22-SK5	JX-DIN462-D22-SK7	JX-DIN462-D22-SS	40	1	6	19.5	4
24	JX-DIN462-D24-65MN	JX-DIN462-D24-SK5	JX-DIN462-D24-SK7	JX-DIN462-D24-SS	42	1	6	21.6	4
26	JX-DIN462-D26-65MN	JX-DIN462-D26-SK5	JX-DIN462-D26-SK7	JX-DIN462-D26-SS	45	1	7	23.5	5
28	JX-DIN462-D28-65MN	JX-DIN462-D28-SK5	JX-DIN462-D28-SK7	JX-DIN462-D28-SS	50	1	7	25.5	5
30	JX-DIN462-D30-65MN	JX-DIN462-D30-SK5	JX-DIN462-D30-SK7	JX-DIN462-D30-SS	50	1.2	7	27.5	5
32	JX-DIN462-D32-65MN	JX-DIN462-D32-SK5	JX-DIN462-D32-SK7	JX-DIN462-D32-SS	52	1.2	7	29.6	5
35	JX-DIN462-D35-65MN	JX-DIN462-D35-SK5	JX-DIN462-D35-SK7	JX-DIN462-D35-SS	55	1.2	7	32.6	5
38	JX-DIN462-D38-65MN	JX-DIN462-D38-SK5	JX-DIN462-D38-SK7	JX-DIN462-D38-SS	58	1.2	8	35.3	5
40	JX-DIN462-D40-65MN	JX-DIN462-D40-SK5	JX-DIN462-D40-SK7	JX-DIN462-D40-SS	62	1.2	8	37.3	5
42	JX-DIN462-D42-65MN	JX-DIN462-D42-SK5	JX-DIN462-D42-SK7	JX-DIN462-D42-SS	62	1.2	8	39.3	5
45	JX-DIN462-D45-65MN	JX-DIN462-D45-SK5	JX-DIN462-D45-SK7	JX-DIN462-D45-SS	68	1.2	8	42.4	5
48	JX-DIN462-D48-65MN	JX-DIN462-D48-SK5	JX-DIN462-D48-SK7	JX-DIN462-D48-SS	75	1.2	8	45.4	5
50	JX-DIN462-D50-65MN	JX-DIN462-D50-SK5	JX-DIN462-D50-SK7	JX-DIN462-D50-SS	75	1.2	8	47.4	5
52	JX-DIN462-D52-65MN	JX-DIN462-D52-SK5	JX-DIN462-D52-SK7	JX-DIN462-D52-SS	80	1.2	10	49.3	6
55	JX-DIN462-D55-65MN	JX-DIN462-D55-SK5	JX-DIN462-D55-SK7	JX-DIN462-D55-SS	80	1.2	10	52.9	6
58	JX-DIN462-D58-65MN	JX-DIN462-D58-SK5	JX-DIN462-D58-SK7	JX-DIN462-D58-SS	90	1.2	10	55.3	6
60	JX-DIN462-D60-65MN	JX-DIN462-D60-SK5	JX-DIN462-D60-SK7	JX-DIN462-D60-SS	90	1.5	10	57.3	6

Pedestal Coupling - Type BG, BGT, BN And BNT



Part Number Designation
JX-GB679 - 31 - 40 - ST

Type and Material: Stainless Steel
Size Code: 31
Thick Code: 40
Material Code: ST

Part Number Designation
JX-GB679 - 31 - 40 - SS

Type and Material: Stainless Steel
Size Code: 31
Thick Code: 40
Material Code: SS

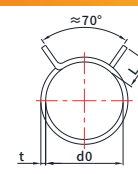
Material: domestic high-quality S60C, SUS304, 316 (A2, A4) high-quality steel; Surface treatment: natural color hardening or phosphating black, hydrogen removal, galvanizing, dacromet, electroplating, etc.

Unit: mm

Size	P/N		Inside diameter of nose	PN MPa	b	h		Weight of 1pcs ≈ Kg
	Carbon Steel	Stainless Steel				BG, BNT	BGT, BNT	
31~40	JX-GB679-31~40-ST	JX-GB679-31~40-SS	22~28	1	14	0.8	0.6	0.029
41~50	JX-GB679-41~50-ST	JX-GB679-41~50-SS	30~38	1	14	0.8	0.6	0.032
51~60	JX-GB679-51~60-ST	JX-GB679-51~60-SS	40~45	1	14	0.8	0.6	0.035
61~80	JX-GB679-61~80-ST	JX-GB679-61~80-SS	48~65	1	14	0.8	0.6	0.040
81~90	JX-GB679-81~90-ST	JX-GB679-81~90-SS	70~75	0.6	14	0.8	0.6	0.048
91~105	JX-GB679-91~105-ST	JX-GB679-91~105-SS	80~90	0.6	14	1	0.6	0.056
114~125	JX-GB679-114~125-ST	JX-GB679-114~125-SS	100~110	0.25	14	1	0.6	0.062
130~145	JX-GB679-130~145-ST	JX-GB679-130~145-SS	120~130	0.25	14	1	0.6	0.074

JX STAMPING FASTENERS SERIES

Q673 Steel strip type elastic ring hoop



Part Number Designation
JX-Q673 - 7 - h - 37

Type and Material: Steel
Size Code: 7
Thick Code: h
Material Code: 37

Part Number Designation
JX-Q673 - 7 - h - SS

Type and Material: Stainless Steel
Size Code: 7
Thick Code: h
Material Code: SS

Material: domestic high-quality S60C, SUS304, 316 (A2, A4) high-quality steel; Surface treatment: natural color hardening or phosphating black, hydrogen removal, galvanizing, dacromet, electroplating, etc.

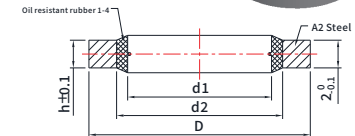
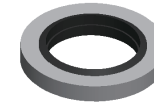
Unit: mm

d0		P/N	h		d0		P/N	h	
nom.	tol.		nom.	tol.	nom.	tol.		nom.	tol.
7	±0.2	JX-Q673-7-65Mn	6		15.5	10	JX-Q673-15.5-65Mn	12	±0.25
8		JX-Q673-8-65Mn							
8.5		JX-Q673-8.5-65Mn							
9		JX-Q673-9-65Mn							
9.5		JX-Q673-9.5-65Mn							
10	±0.25	JX-Q673-10-65Mn	8	±0.25	16	JX-Q673-16-65Mn			
10.5		JX-Q673-10.5-65Mn							
11		JX-Q673-11-65Mn							
11.5		JX-Q673-11.5-65Mn							
12		JX-Q673-12-65Mn							
12.5	±0.3	JX-Q673-12.5-65Mn	10	±0.3	16.5	JX-Q673-16.5-65Mn			
13		JX-Q673-13-65Mn							
13.5		JX-Q673-13.5-65Mn							
14		JX-Q673-14-65Mn							
14.5		JX-Q673-14.5-65Mn							
15	JX-Q673-15-65Mn	JX-Q673-15-65Mn	17	JX-Q673-17-65Mn					
		JX-Q673-17.5-65Mn	17.5	JX-Q673-17.5-65Mn					
		JX-Q673-18-65Mn	18	JX-Q673-18-65Mn					
		JX-Q673-18.5-65Mn	18.5	JX-Q673-18.5-65Mn					
		JX-Q673-19-65Mn	19	JX-Q673-19-65Mn					
		JX-Q673-19.5-65Mn	19.5	JX-Q673-19.5-65Mn					
		JX-Q673-20-65Mn	20	JX-Q673-20-65Mn					
		JX-Q673-20.5-65Mn	20.5	JX-Q673-20.5-65Mn					
		JX-Q673-21-65Mn	21	JX-Q673-21-65Mn					
		JX-Q673-23-65Mn	23	JX-Q673-23-65Mn					
		JX-Q673-24-65Mn	24	JX-Q673-24-65Mn					
		JX-Q673-25-65Mn	25	JX-Q673-25-65Mn					

JB982 - 1977 Combination Sealing Washer



Material: Carbon steel, Stainless steel, Brass



Part Number Designation
JX-JB982 - 8 - 14 - ST

Type and Material: Steel
Size Code: 8
Outer Dia Code: 14
Material Code: ST

Material: Stainless Steel
Part Number Designation
JX-JB982 - 8 - 14 - SS

Type and Material: Stainless Steel
Size Code: 8
Outer Dia Code: 14
Material Code: SS

Unit: mm

Size	P/N			d1			d2			D		h	Applicable thread
	Carbon Steel	Stainless Steel	Brass	Nom	Max	Min	Max	Min=Nom	Max=Nom	Min	Max		
8	JX-JB982-8-14-ST	JX-JB982-8-14-SS	JX-JB982-8-14-B	8.4	8.52	8.28	10.24	10	14	13.76	2.7	M8	
10	JX-JB982-10-16-ST	JX-JB982-10-16-SS	JX-JB982-10-16-B	10.4	10.52	10.28	12.24	12	16	15.76	2.7	M10(G1/8)	
12	JX-JB982-12-18-ST	JX-JB982-12-18-SS	JX-JB982-12-18-B	12.4	12.52	12.28	14.24	14	18	17.76	2.7	M12	
14	JX-JB982-14-20-ST	JX-JB982-14-20-SS	JX-JB982-14-20-B	14.4	14.52	14.28	16.24	16	20	19.72	2.7	M14(G1/4)	
16	JX-JB982-16-22-ST	JX-JB982-16-22-SS	JX-JB982-16-22-B	16.4	16.52	16.28	18.24	18	22	21.72	2.7	M16	
18	JX-JB982-18-25-ST	JX-JB982-18-25-SS	JX-JB982-18-25-B	18.4	18.52	18.28	20.28	20	25	24.72	2.7	M18(G3/8)	
20	JX-JB982-20-28-ST	JX-JB982-20-28-SS	JX-JB982-20-28-B	20.5	20.64	20.36	23.28	23	28	27.72	2.7	M20	
22	JX-JB982-22-30-ST	JX-JB982-22-30-SS	JX-JB982-22-30-B	22.5	22.64	22.36	25.28	25	30	29.72	2.7	M22(G1/2)	
24	JX-JB982-24-32-ST	JX-JB982-24-32-SS	JX-JB982-24-32-B	24.5	24.64	24.36	27.28	27	32	31.66	2.7	M24	
27	JX-JB982-27-35-ST	JX-JB982-27-35-SS	JX-JB982-27-35-B	27.5	27.64	27.36	30.28	30	35	34.66	2.7	M27(G3/4)	
30	JX-JB982-30-38-ST	JX-JB982-30-38-SS	JX-JB982-30-38-B	30.5	30.64	30.36	33.34	33	38	37.66	2.7	M30	
33	JX-JB982-33-42-ST	JX-JB982-33-42-SS	JX-JB982-33-42-B	33.5	33.67	33.33	36.34	36	42	41.66	2.7	M33(G1)	
36	JX-JB982-36-46-ST	JX-JB982-36-46-SS	JX-JB982-36-46-B	36.6	36.77	36.43	40.34	40	46	45.66	2.9	M36	
39	JX-JB982-39-50-ST	JX-JB982-39-50-SS	JX-JB982-39-50-B	39.6	39.77	39.43	43.34	43	50	49.66	2.9	M39	
42	JX-JB982-42-53-ST	JX-JB982-42-53-SS	JX-JB982-42-53-B	42.6	42.77	42.43	46.34	46	53	52.6	2.9	M42(G1-1/4)	
45	JX-JB982-45-56-ST	JX-JB982-45-56-SS	JX-JB982-45-56-B	45.6	45.77	45.43	49.34	49	56	55.6	2.9	M45	
48	JX-JB982-48-60-ST	JX-JB982-48-60-SS	JX-JB982-48-60-B	48.7	48.87	48.53	52.4	52	60	59.6	2.9	M48	
52	JX-JB982-52-66-ST	JX-JB982-52-66-SS	JX-JB982-52-66-B	52.7	52.9	52.5	56.4	56	66	65.6	2.9	M52	
60	JX-JB982-60-75-ST	JX-JB982-60-75-SS	JX-JB982-60-75-B	60.7	60.9	60.5	64.4	64	75	74.6	2.9	M60(G2)	