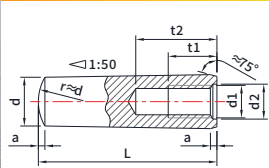


# JX PIN & SHAFT FASTENERS SERIES

## JX-GB/T 118-2000 Tapered pin with internal thread Type A and type B



Part Number Designation  
 JX-GB118 - Φ6 - L - ST  
 Type and Material Code Size Long Code Material Code  
 Material:Steel

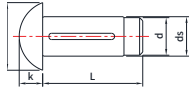
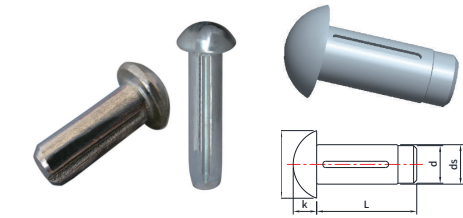
Part Number Designation  
 JX - GB118 - Φ6 - SS  
 Type and Material Code Size Long Code Material Code  
 Material:Stainless steel

Material:Carbon Steel,  
Stainless Steel

Size	P/N		Nom Dia d	d		a ≈	d1	P	d2	t1	t2
	Carbon Steel	Stainless Steel		max	min						
Φ6	JX-GB118-Φ6-L-ST	JX-GB118-Φ6-L-SS	Φ6	6	5.952	0.8	M4	0.7	4.3	6	10
Φ8	JX-GB118-Φ8-L-ST	JX-GB118-Φ8-L-SS	Φ8	8	7.942	1	M5	0.8	5.3	8	12
Φ10	JX-GB118-Φ10-L-ST	JX-GB118-Φ10-L-SS	Φ10	10	9.942	1.2	M6	1	6.4	10	16
Φ12	JX-GB118-Φ12-L-ST	JX-GB118-Φ12-L-SS	Φ12	12	11.93	1.6	M8	1.25	8.4	12	20
Φ16	JX-GB118-Φ16-L-ST	JX-GB118-Φ16-L-SS	Φ16	16	15.93	2	M10	1.5	10.5	16	25
Φ20	JX-GB118-Φ20-L-ST	JX-GB118-Φ20-L-SS	Φ20	20	19.916	2.5	M12	1.75	13	18	28
Φ25	JX-GB118-Φ25-L-ST	JX-GB118-Φ25-L-SS	Φ25	25	24.916	3	M16	2	17	24	35
Φ30	JX-GB118-Φ30-L-ST	JX-GB118-Φ30-L-SS	Φ30	30	29.916	4	M20	2.5	21	30	40
Φ40	JX-GB118-Φ40-L-ST	JX-GB118-Φ40-L-SS	Φ40	40	39.9	5	M20	2.5	21	30	40
Φ50	JX-GB118-Φ50-L-ST	JX-GB118-Φ50-L-SS	Φ50	50	49.9	6.3	M24	3	25	36	50

①.Type A (grinding): cone surface roughness Ra = 0.8 μm; type B (cutting or cold heading): cone surface roughness Ra = 3.2 μm

## JX-GB/T 13829.8-2004 Round head slot pin



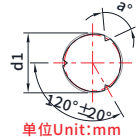
Part Number Designation  
 JX-GB/T13829.8 - Φ1.4 - L - ST  
 Type and Material Code Size Long Code Material Code  
 Material:Steel

Part Number Designation  
 JX-GB/T13829.8 - Φ1.4 - L - SS  
 Type and Material Code Size Long Code Material Code  
 Material:Steel

Material:Carbon Steel,  
Stainless Steel

Size	P/N		Nom Dia d	d		dk		k	
	Carbon Steel	Stainless Steel		max	min	max	min	max	min
Φ1.4	JX-GB13829.8-Φ1.4-L-ST	JX-GB13829.8-Φ1.4-L-SS	Φ1.4	1.4	1.35	2.6	2.2	0.9	0.7
Φ1.6	JX-GB13829.8-Φ1.6-L-ST	JX-GB13829.8-Φ1.6-L-SS	Φ1.6	1.6	1.55	3	2.6	1.1	0.9
Φ2	JX-GB13829.8-Φ2-L-ST	JX-GB13829.8-Φ2-L-SS	Φ2	2	1.95	3.7	3.3	1.3	1.1
Φ2.5	JX-GB13829.8-Φ2.5-L-ST	JX-GB13829.8-Φ2.5-L-SS	Φ2.5	2.5	2.425	4.6	4.2	1.6	1.4
Φ3	JX-GB13829.8-Φ3-L-ST	JX-GB13829.8-Φ3-L-SS	Φ3	3	2.925	5.45	4.95	1.95	1.65
Φ4	JX-GB13829.8-Φ4-L-ST	JX-GB13829.8-Φ4-L-SS	Φ4	4	3.9	7.25	6.75	2.55	2.25
Φ5	JX-GB13829.8-Φ5-L-ST	JX-GB13829.8-Φ5-L-SS	Φ5	5	4.9	9.1	8.5	3.15	2.85
Φ6	JX-GB13829.8-Φ6-L-ST	JX-GB13829.8-Φ6-L-SS	Φ6	6	5.9	10.8	10.2	3.75	3.45
Φ8	JX-GB13829.8-Φ8-L-ST	JX-GB13829.8-Φ8-L-SS	Φ8	8	7.85	14.4	13.6	5	4.6
Φ10	JX-GB13829.8-Φ10-L-ST	JX-GB13829.8-Φ10-L-SS	Φ10	10	9.85	16	14.9	7.4	6.5
Φ12	JX-GB13829.8-Φ12-L-ST	JX-GB13829.8-Φ12-L-SS	Φ12	12	11.8	19	17.7	8.4	7.5
Φ16	JX-GB13829.8-Φ16-L-ST	JX-GB13829.8-Φ16-L-SS	Φ16	16	15.8	25	23.7	10.9	10
Φ20	JX-GB13829.8-Φ20-L-ST	JX-GB13829.8-Φ20-L-SS	Φ20	20	19.8	32	30.7	13.9	13

## JX-DIN 1472 Grooved pin Semi long conical groove

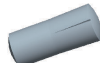


Remark:We can also produce and manufacture according to the material and surface treatment required by the customer

Material:Carbon Steel,  
Stainless Steel

Part Number Designation  
 JX-DIN1472 - 1.5 - L - ST  
 Type and Material Code Size Long Code Material Code  
 Material:Steel

Part Number Designation  
 JX-DIN1472 - 1.5 - L - SS  
 Type and Material Code Size Long Code Material Code  
 Material:Stainless Steel

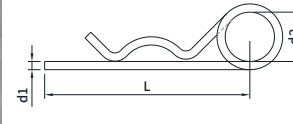


# JX PIN & SHAFT FASTENERS SERIES

Size	P/N		max.	min.
	Carbon Steel	Stainless Steel		
Φ1.5	JX-DIN1472-Φ1.5-L-ST	JX-DIN1472-Φ1.5-L-SS	1.5	1.475
Φ2	JX-DIN1472-Φ2-L-ST	JX-DIN1472-Φ2-L-SS	2	1.975
Φ2.5	JX-DIN1472-Φ2.5-L-ST	JX-DIN1472-Φ2.5-L-SS	2.5	2.475
Φ3	JX-DIN1472-Φ3-L-ST	JX-DIN1472-Φ3-L-SS	3	2.975
Φ4	JX-DIN1472-Φ4-L-ST	JX-DIN1472-Φ4-L-SS	4	3.925
Φ5	JX-DIN1472-Φ5-L-ST	JX-DIN1472-Φ5-L-SS	5	4.925
Φ6	JX-DIN1472-Φ6-L-ST	JX-DIN1472-Φ6-L-SS	6	5.925
Φ8	JX-DIN1472-Φ8-L-ST	JX-DIN1472-Φ8-L-SS	8	7.91
Φ10	JX-DIN1472-Φ10-L-ST	JX-DIN1472-Φ10-L-SS	10	9.91
Φ12	JX-DIN1472-Φ12-L-ST	JX-DIN1472-Φ12-L-SS	12	11.89
Φ16	JX-DIN1472-Φ16-L-ST	JX-DIN1472-Φ16-L-SS	16	15.89
Φ20	JX-DIN1472-Φ20-L-ST	JX-DIN1472-Φ20-L-SS	20	19.87
Φ25	JX-DIN1472-Φ25-L-ST	JX-DIN1472-Φ25-L-SS	25	24.87

①The groove angle A should be determined by the process according to the material variable; for the groove pin made of easy cutting steel, a = 70°

## JX-DIN 11024-1973 R-type locking pin (spring pin)



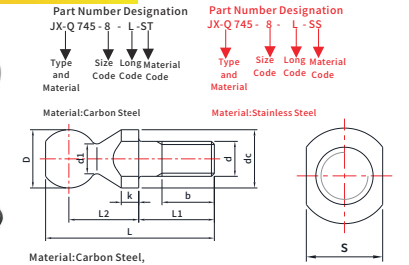
Part Number Designation  
 JX-DIN 11024 - 2.5 - 42 - ST  
 Type and Material Code Size Long Code Material Code  
 Material:Steel

Part Number Designation  
 JX-DIN 11024 - 2.5 - 42 - SS  
 Type and Material Code Size Long Code Material Code  
 Material:Stainless Steel

Material: Spring Steel, Carbon Steel,  
Stainless Steel

规格 Size	料号/P/N			d		d1	d2	L	100/PCS ≈kg
	碳钢Carbon Steel	不锈钢Stainless Steel	材料Material	min	max				
2.5	JX-DIN11024-2.5-L-SP	JX-DIN11024-2.5-L-ST	JX-DIN11024-2.5-L-SS	2.5	2.64	2.25	20	42	0.59
3.2	JX-DIN11024-3.2-L-SP	JX-DIN11024-3.2-L-ST	JX-DIN11024-3.2-L-SS	3.2	3.38	2.8	20	48	0.99
4	JX-DIN11024-4-L-SP	JX-DIN11024-4-L-ST	JX-DIN11024-4-L-SS	4	4.18	3.6	20	64	1.89
5	JX-DIN11024-5-L-SP	JX-DIN11024-5-L-ST	JX-DIN11024-5-L-SS	5	5.18	4.5	25	80	3.54
6.3	JX-DIN11024-6.3-L-SP	JX-DIN11024-6.3-L-ST	JX-DIN11024-6.3-L-SS	6.3	6.52	5.6	25	97	6.18
7	JX-DIN11024-7-L-SP	JX-DIN11024-7-L-ST	JX-DIN11024-7-L-SS	7	7.22	6.3	30	125	9.7
8	JX-DIN11024-8-L-SP	JX-DIN11024-8-L-ST	JX-DIN11024-8-L-SS	8	8.22	7	30	150	13.4

## JX-Q 745 Screw type ball pin for automotive



Material:Carbon Steel,  
Stainless Steel, Brass

Size	P/N			D		L	L2	L1	b	d1	d	dc	s	k
	Carbon Steel	Stainless Steel	Brass	max	min									
8	JX-Q745-8-26-ST	JX-Q745-8-26-SS	JX-Q745-8-26-B	8	7.964	26	11	12	8	4	M5	8	7	3
10	JX-Q745-10-29-ST	JX-Q745-10-29-SS	JX-Q745-10-29-B	10	9.964	29	12	13	9	5	M6	10	8	3
12	JX-Q745-12-34.5-ST	JX-Q745-12-34.5-SS	JX-Q745-12-34.5-B	12	11.957	34.5	15	15	10	6	M8x1	13	10	3

①Example of number:  
 1. d=M6, The number of galvanized and rainbow passivated automotive screw ball pin is Q74506.  
 2. d=M6, The oxidized screw ball pin for automobile is Q74506F9.