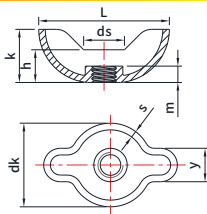


JX HARDWARE NUTS FASTENERS SERIES

JX-GB/T62.3-2004 Butterfly nut (Stamping)



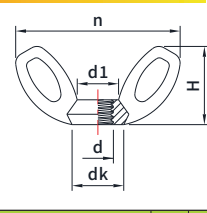
Material: Carbon steel,
Stainless steel

Surface treatment: zinc, zinc - nickel alloy
Can also be produced according to customer requirements

Unit:mm

Size	P/N		dk max.	ds	L						h	y	m						Weight of 1000pcs ≈Kg		
	Carbon steel	Stainless steel			nom.	max.	min.	nom.	max.	min.			A type (Tall)			B Type (Low)					
													nom.	max.	min.	nom.	max.	min.		nom.	max.
M3	JX-GB623-M3-ST	JX-GB623-M3-SS	10	5	16	17	15	6.5	7.5	5.5	2	4	3.5	4	3	1.4	1.7	1.1	1	0.8	1.9
M4	JX-GB623-M4-ST	JX-GB623-M4-SS	12	6	19	20	18	8.5	9.5	7.5	2.5	5	4	4.5	3.5	1.6	1.9	1.3	1	0.8	2.88
M5	JX-GB623-M5-ST	JX-GB623-M5-SS	13	7	22	23	21	9	10	8	3	5.5	4.5	5	4	1.8	2.1	1.5	1	0.8	3.58
M6	JX-GB623-M6-ST	JX-GB623-M6-SS	15	9	25	26	24	9.5	10.5	8.5	3.5	6	5	5.8	4.2	2.4	2.8	2	1	1	4.51
M8	JX-GB623-M8-ST	JX-GB623-M8-SS	17	10	28	29	27	11	12	10	5	7	6	6.8	5.2	3.1	3.6	2.6	1.2	1.2	7.48
M10	JX-GB623-M10-ST	JX-GB623-M10-SS	20	12	35	36.5	33.5	12	13	11	6	8	7	7.8	6.2	3.8	4.3	3.3	1.2	1.2	10.4

JX-GB/T62.4-2004 Die casting Butterfly nut



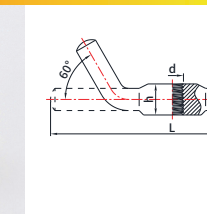
Material: Carbon steel,
Stainless steel

Surface treatment: zinc, zinc - nickel alloy
Can also be produced according to customer requirements

Unit:mm

Size	P/N		dk min.	d1	n						k	h1 max.	h2 max.	Weight of 1000pcs ≈Kg			
	Carbon steel	Stainless Steel			nom.	max.	min.	nom.	max.	min.					H		
															nom.	max.	min.
M3	JX-GB62.4-M3-ST	JX-GB62.4-M3-SS	5	4	16	17.5	14.5	8.5	10	7	2.4	2.5	3	1.13			
M4	JX-GB62.4-M4-ST	JX-GB62.4-M4-SS	7	6	21	22.5	19.5	11	12.5	9.5	3.2	3	4	2.49			
M5	JX-GB62.4-M5-ST	JX-GB62.4-M5-SS	8.5	7	21	22.5	19.5	11	12.5	9.5	4	3.5	4.5	2.98			
M6	JX-GB62.4-M6-ST	JX-GB62.4-M6-SS	10.5	9	23	24.5	21.5	14	15.5	12.5	5	4	5	4.82			
M8	JX-GB62.4-M8-ST	JX-GB62.4-M8-SS	13	10	30	31.5	28.5	16	17.5	14.5	6.5	4.5	5.5	8.34			
M10	JX-GB62.4-M10-ST	JX-GB62.4-M10-SS	16	12	37	39	35	19	20.5	17.5	8	5.5	6.5	14.77			

JX-JB/T3411.63-1999 Horn nut



Material: Carbon steel,
Stainless steel, Brass

Surface treatment: zinc, zinc - nickel alloy
Can also be produced according to customer requirements

Unit:mm

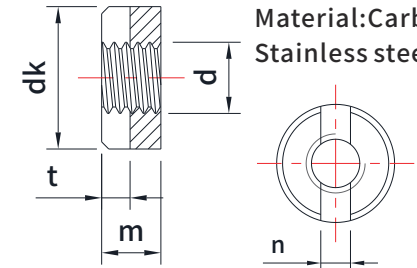
Size	Carbon Steel P/N		Stainless Steel P/N		Brass P/N		P pitch	ds	h	L ≈
M5	JX-JB3411.63-M5-ST	JX-JB3411.63-M5-SS	JX-JB3411.63-M5-B				0.8	5	7	55
M6	JX-JB3411.63-M6-ST	JX-JB3411.63-M6-SS	JX-JB3411.63-M6-B				1	6	9	72
M8	JX-JB3411.63-M8-ST	JX-JB3411.63-M8-SS	JX-JB3411.63-M8-B				1.25	8	11	90
M10	JX-JB3411.63-M10-ST	JX-JB3411.63-M10-SS	JX-JB3411.63-M10-B				1.5	10	13	105
M12	JX-JB3411.63-M12-ST	JX-JB3411.63-M12-SS	JX-JB3411.63-M12-B				1.75	12	16	132
M16	JX-JB3411.63-M16-ST	JX-JB3411.63-M16-SS	JX-JB3411.63-M16-B				2	15	19	160
M20	JX-JB3411.63-M20-ST	JX-JB3411.63-M20-SS	JX-JB3411.63-M20-B				2.5	18	22	190

Remark: We only show part of the specifications, we can also produce various sizes according to the customer's requirements

JX HARDWARE NUTS FASTENERS SERIES

JX-DIN 546-1986 Slotted round nut

Surface treatment: zinc, zinc - nickel alloy
Can also be produced according to customer requirements



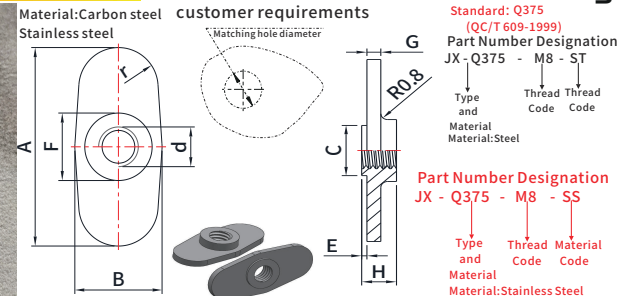
Material: Carbon steel,
Stainless steel, Brass

Unit:mm

Size	P/N			pitch	dk		m		n		t		Weight of 1000pcs ≈Kg
	Carbon Steel	Stainless Steel	Brass		max.	min.	max.	min.	max.	min.	max.	min.	
M1	JX-D546-M1-ST	JX-D546-M1-SS	JX-D546-M1-B	0.25	2.5	2.25	1	0.75	0.5	0.36	0.5	0.3	0.034
M1.2	JX-D546-M1.2-ST	JX-D546-M1.2-SS	JX-D546-M1.2-B	0.25	3	2.75	1.2	0.95	0.6	0.46	0.6	0.4	0.057
M1.4	JX-D546-M1.4-ST	JX-D546-M1.4-SS	JX-D546-M1.4-B	0.3	3	2.75	1.4	1.15	0.6	0.46	0.7	0.5	0.063
M1.6	JX-D546-M1.6-ST	JX-D546-M1.6-SS	JX-D546-M1.6-B	0.35	3.5	3.2	1.6	1.35	0.7	0.56	0.8	0.6	0.1
M2	JX-D546-M2-ST	JX-D546-M2-SS	JX-D546-M2-B	0.4	4.5	4.2	2	1.75	1.2	1.06	1	0.8	0.21
M2.5	JX-D546-M2.5-ST	JX-D546-M2.5-SS	JX-D546-M2.5-B	0.45	5.5	5.2	2.2	1.95	1.51	1.26	1.1	0.9	0.34
M3	JX-D546-M3-ST	JX-D546-M3-SS	JX-D546-M3-B	0.5	6	5.7	2.5	2.25	1.51	1.26	1.2	1	0.43
M3.5	JX-D546-M3.5-ST	JX-D546-M3.5-SS	JX-D546-M3.5-B	0.6	7	6.64	3	2.75	1.71	1.46	1.4	1	0.7
M4	JX-D546-M4-ST	JX-D546-M4-SS	JX-D546-M4-B	0.7	8	7.64	3.5	3.2	1.71	1.46	1.6	1.2	1.07
M5	JX-D546-M5-ST	JX-D546-M5-SS	JX-D546-M5-B	0.8	9	8.64	4.2	3.9	2.31	2.06	1.9	1.5	1.8
M6	JX-D546-M6-ST	JX-D546-M6-SS	JX-D546-M6-B	1	11	10.57	5	4.7	2.81	2.56	2.4	2	2.73
M8	JX-D546-M8-ST	JX-D546-M8-SS	JX-D546-M8-B	1.25	14	13.57	6.5	6.14	3.31	3.06	3	2.5	5.57
M10	JX-D546-M10-ST	JX-D546-M10-SS	JX-D546-M10-B	1.5	18	17.57	8	7.64	3.87	3.57	3.7	3.2	11.5
M12	JX-D546-M12-ST	JX-D546-M12-SS	JX-D546-M12-B	1.75	21	20.48	10	9.64	4.37	4.07	4.3	3.8	21.5
M14	JX-D546-M14-ST	JX-D546-M14-SS	JX-D546-M14-B	2	24	23.48	11	10.57	4.37	4.07	4.3	3.8	27.1
M16	JX-D546-M16-ST	JX-D546-M16-SS	JX-D546-M16-B	2	26	25.48	12	11.57	4.37	4.07	4.3	3.8	36.8
M18	JX-D546-M18-ST	JX-D546-M18-SS	JX-D546-M18-B	2.5	29	28.48	13	12.57	4.37	4.07	5.5	4.8	48.4
M20	JX-D546-M20-ST	JX-D546-M20-SS	JX-D546-M20-B	2.5	32	31.38	14	13.57	5.37	5.07	5.5	4.8	57.2

JX-Q375 QC/T 609-1999 Plate welding nut

Surface treatment: zinc, zinc - nickel alloy
Can also be produced according to customer requirements



Unit:mm

Size	P/N		F		H		A		B		G		C		E		Matched aperture r				
	Carbon Steel	Stainless Steel	max.	min.	nom.	max.	min.	nom.	max.	min.	nom.	max.	min.	max.	min.	max.					
M5	JX-Q375-M5-ST	JX-Q375-M5-SS	8.5	8	4	4.5	3.5	25	25.7	24.3	11	11.5	10.5	1.6	1.7	1.4	6.9	6.6	0.4	5	7-7.3
M6	JX-Q375-M6-ST	JX-Q375-M6-SS	10	9.5	4.7	5.2	4.2	28	28.1	27.9	12.5	13	12	1.8	1.9	1.6	8.9	8.6	0.4	5	9-9.3
M8	JX-Q375-M8-ST	JX-Q375-M8-SS	12.7	12	6	6.5	5.5	30	30.1	29.9	15	15.5	14.5	2	2.1	1.8	10.9	10.6	0.4	6	11-11.3

Remark: We only show part of the specifications, we can also produce various sizes according to the customer's requirements