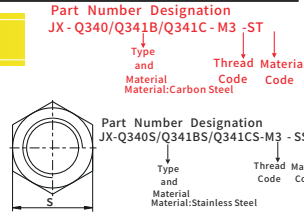
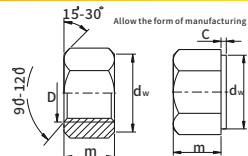
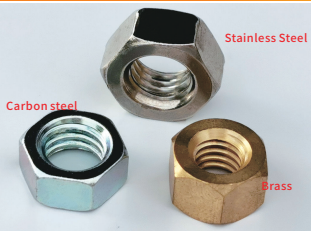


Automotive standard nut series

JX-Q340B, JX-Q341B, JX-341C 1 Hexagon nuts, style 1



Standard:
 Q340B(GB/T6170-2000 Coarse common thread)
 Q341B(GB/T6171-2000 fine pitch common thread)
 Q341C(GB/T6171-2000 Ordinary thread with finer thread)

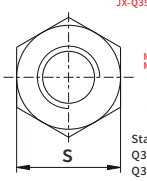
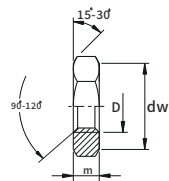
Material: Carbon Steel, Stainless Steel, Brass
 Carbon Steel Grade: 5, 6, 8, 10, 12

Unit: mm

Size(D)			P/N		C		d _w		m		S	
Q340B	Q341B	Q341C	Carbon Steel	Stainless steel	max	min	max	min	max	min	max	min
M3	/	/	JX-Q340B-M3-ST	JX-Q340B-M3-SS	0.4	0.15	4.60	2.40	2.15	5.5	5.32	
M4	/	/	JX-Q340B-M4-ST	JX-Q340B-M4-SS	0.4	0.15	5.90	3.20	2.90	7	6.78	
M5	/	/	JX-Q340B-M5-ST	JX-Q340B-M5-SS	0.5	0.15	6.90	4.70	4.40	8	7.78	
M6	/	/	JX-Q340B-M6-ST	JX-Q340B-M6-SS	0.5	0.15	8.90	5.20	4.90	10	9.78	
M8	M8X1	/	JX-Q340B/Q341B-M8-ST	JX-Q340B/Q341B-M8-SS	0.6	0.15	11.60	6.80	6.44	13	12.73	
M10	M10X1	(M10X1.25)	JX-Q340B/Q341B/Q341C-M10-ST	JX-Q340B/Q341B/Q341C-M10-SS	0.6	0.15	14.60	8.40	8.04	16	15.73	
M12	(M12X1.25)	(M12X1.5)	JX-Q340B/Q341B/Q341C-M12-ST	JX-Q340B/Q341B/Q341C-M12-SS	0.6	0.15	16.60	10.80	10.37	18	17.73	
(M14)	(M14X1.5)	/	JX-Q340B/Q341B-M14-ST	JX-Q340B/Q341B-M14-SS	0.6	0.2	19.60	12.80	12.10	21	20.67	
M16	(M16X1.5)	/	JX-Q340B/Q341B-M16-ST	JX-Q340B/Q341B-M16-SS	0.8	0.2	22.50	14.80	14.10	24	23.67	
(M18)	(M18X1.5)	/	JX-Q340B/Q341B-M18-ST	JX-Q340B/Q341B-M18-SS	0.8	0.2	24.9	15.80	15.10	27	26.16	
M20	M20X1.5	(M20X2)	JX-Q340B/Q341B/Q341C-M20-ST	JX-Q340B/Q341B/Q341C-M20-SS	0.8	0.2	27.70	18	16.90	30	29.16	
(M22)	(M22X1.5)	(M22X2)	JX-Q340B/Q341B/Q341C-M22-ST	JX-Q340B/Q341B/Q341C-M22-SS	0.8	0.2	31.40	19.40	18.10	34	33	
M24	M24X2	/	JX-Q340B/Q341B-M24-ST	JX-Q340B/Q341B-M24-SS	0.8	0.2	33.3	21.50	20.20	36	35	
(M27)	(M27X2)	/	JX-Q340B/Q341B-M27-ST	JX-Q340B/Q341B-M27-SS	0.8	0.2	38	23.80	22.50	41	40	
M30	M30X2	/	JX-Q340B/Q341B-M30-ST	JX-Q340B/Q341B-M30-SS	0.8	0.2	42.8	25.60	24.30	46	45	
M33	(M33X2)	/	JX-Q340B/Q341B-M33-ST	JX-Q340B/Q341B-M33-SS	0.8	0.2	46.60	28.70	27.40	50	49	
M36	M36X3	/	JX-Q340B/Q341B-M36-ST	JX-Q340B/Q341B-M36-SS	0.8	0.2	51.10	31	29.40	55	53.80	

Remark: Try to avoid the specifications of the brackets.

JX-350, JX-351B, JX-351C Hexagon thin nuts



Standard:
 Q350(GB/T6172.1-2000 Coarse common thread)
 Q351B(GB/T6173-2000 fine pitch common thread)
 Q351C(GB/T6173-2000 Ordinary thread with finer thread)

Material: Carbon Steel, Stainless Steel, Brass
 Carbon Steel Grade: 5, 6, 8, 10, 12

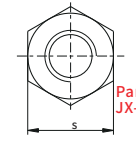
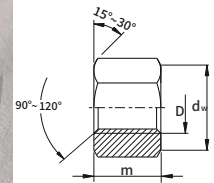
Unit: mm

Size(D)			P/N		d _w		m		S	
Q350B	Q351B	Q351C	Carbon Steel	Stainless steel	min	max	min	max	min	max
M3	/	/	JX-Q350B-M3-ST	JX-Q350B-M3-SS	4.60	1.80	1.55	5.5	5.32	
M4	/	/	JX-Q350B-M4-ST	JX-Q350B-M4-SS	5.90	2.20	1.95	7	6.78	
M5	/	/	JX-Q350B-M5-ST	JX-Q350B-M5-SS	6.90	2.20	2.45	8	7.78	
M6	/	/	JX-Q350B-M6-ST	JX-Q350B-M6-SS	8.90	3.20	2.90	10	9.78	
M8	M8X1	/	JX-Q350B/Q351B-M8-ST	JX-Q350B/Q351B-M8-SS	11.60	4	3.70	13	12.73	
M10	M10X1	(M10X1.25)	JX-Q350B/Q351B/Q351C-M10-ST	JX-Q350B/Q351B/Q351C-M10-SS	14.60	5	4.70	16	15.73	
M12	(M12X1.25)	(M12X1.5)	JX-Q350B/Q351B/Q351C-M12-ST	JX-Q350B/Q351B/Q351C-M12-SS	16.60	6	5.70	18	17.73	
(M14)	(M14X1.5)	/	JX-Q350B/Q351B-M14-ST	JX-Q350B/Q351B-M14-SS	19.60	7	6.42	21	20.67	
M16	(M16X1.5)	/	JX-Q350B/Q351B-M16-ST	JX-Q350B/Q351B-M16-SS	22.50	8	7.42	24	23.67	
(M18)	(M18X1.5)	/	JX-Q350B/Q351B-M18-ST	JX-Q350B/Q351B-M18-SS	24.9	9	8.42	27	26.16	
M20	M20X1.5	(M20X2)	JX-Q350B/Q351B/Q351C-M20-ST	JX-Q350B/Q351B/Q351C-M20-SS	27.70	10	9.10	30	29.16	
(M22)	(M22X1.5)	(M22X2)	JX-Q350B/Q351B/Q351C-M22-ST	JX-Q350B/Q351B/Q351C-M22-SS	31.40	11	9.90	34	33	
M24	M24X2	/	JX-Q350B/Q351B-M24-ST	JX-Q350B/Q351B-M24-SS	33.3	12	10.30	36	35	
(M27)	(M27X2)	/	JX-Q350B/Q351B-M27-ST	JX-Q350B/Q351B-M27-SS	38	13.50	12.40	41	40	
M30	M30X2	/	JX-Q350B/Q351B-M30-ST	JX-Q350B/Q351B-M30-SS	42.8	15	13.90	46	45	
M33	(M33X2)	/	JX-Q350B/Q351B-M33-ST	JX-Q350B/Q351B-M33-SS	46.60	16.50	15.40	50	49	
M36	M36X3	/	JX-Q350B/Q351B-M36-ST	JX-Q350B/Q351B-M36-SS	51.10	18	16.90	55	53.80	

Remark: Try to avoid the specifications of the brackets.

Automotive standard nut series

JX-Q363B, JX-Q363C Hexagon thick nuts



Standard: Q363B Q363C (GB/T 56-1988)

Part Number Designation
 JX-Q363B/Q363C-M16-ST

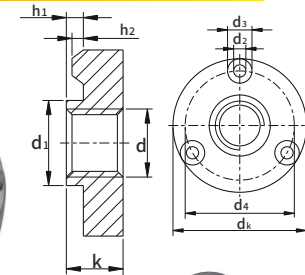
Material: Carbon Steel, Stainless Steel, Brass
 Carbon Steel Grade: 5, 6, 8, 10, 12

Standard:
 Q363B(QC/T858-2011 fine pitch common thread)
 Q363C(QC/T858-2011 Ordinary thread with finer thread)

Unit: mm

Size(D)		P/N		d _w		m		S	
Q363B	Q363C	Carbon Steel	Stainless steel	min	max	min	max	min	max
M16X1.5	/	JX-Q363B-M16-ST	JX-Q363B-M16-SS	22.5	25	24.16	24	23.16	
(M18X1.5)	/	JX-Q363B-M18-ST	JX-Q363B-M18-SS	24.8	28	27.16	27	26.16	
(M20X1.5)	M20X2	JX-Q363B/Q363C-M20-ST	JX-Q363B/Q363C-M20-SS	27.7	32	30.40	30	29.16	
(M22X1.5)	(M22X2)	JX-Q363B/Q363C-M22-ST	JX-Q363B/Q363C-M22-SS	31.4	35	33.40	34	33	
M24X2	/	JX-Q363B-M24-ST	JX-Q363B-M24-SS	33.2	38	36.40	36	35	
(M27X2)	/	JX-Q363B-M27-ST	JX-Q363B-M27-SS	38.0	42	40.40	41	40	
M30X2	/	JX-Q363B-M30-ST	JX-Q363B-M30-SS	42.7	48	46.40	46	45	
M36X3	/	JX-Q363B-M36-ST	JX-Q363B-M36-SS	51.1	55	53.40	55	53.80	

JX-Q368 Round weld nuts



Part Number Designation
 JX-Q368-M8-ST

Material: Carbon Steel

Part Number Designation
 JX-Q368-M8-SS

Material: Stainless Steel

Standard: Q368 (QC/T 867-2011)

Material: Carbon Steel, Stainless steel Sus304
 Carbon Steel Grade: 5, 6, 8, 10, 12

Unit: mm

Thread Size d	P/N		d _k		d ₄		d ₃		d ₂		d ₁		K		h ₁		h ₂	
	Carbon Steel	Stainless steel	max	min	max	min	max	min	max	min	max	min	max	min	max	min	max	
M4	JX-Q368-M4-ST	JX-Q368-M4-SS	13.7	13.3	10.9	10.5	2.8	2.5	0.95	0.65	5.7	5.5	4.45	4.15	1.35	1.1	0.85	0.65
M5	JX-Q368-M5-ST	JX-Q368-M5-SS	14.7	14.3	11.9	11.5	2.8	2.5	0.95	0.65	6.7	6.5	4.7	4.4	1.35	1.1	0.85	0.65
M6	JX-Q368-M6-ST	JX-Q368-M6-SS	16.5	16.1	13.3	12.9	3.2	2.9	1.5	1.2	7.7	7.5	5.2	4.9	1.55	1.3	1.00	0.75
M8	JX-Q368-M8-ST	JX-Q368-M8-SS	22.2	21.8	17.9	17.5	4.3	4	2	1.8	10.7	10.4	6.8	6.44	2	1.75	1.50	1.19
M10	JX-Q368-M10-ST	JX-Q368-M10-SS	24.2	23.8	19.9	19.5	4.3	4	2.1	1.8	12.7	12.4	8.4	8.04	2	1.75	1.50	1.19
M12	JX-Q368-M12-ST	JX-Q368-M12-SS	27.7	27.3	22.7	22.3	5	4.7	2.5	2.2	14.7	14.4	10.8	10.37	2.5	2.25	2.00	1.78