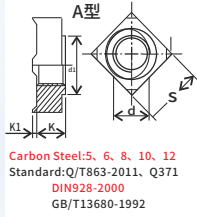
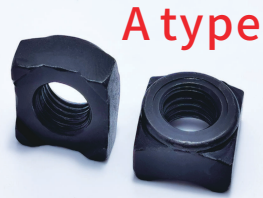


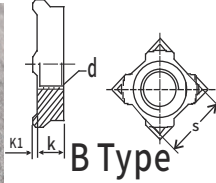
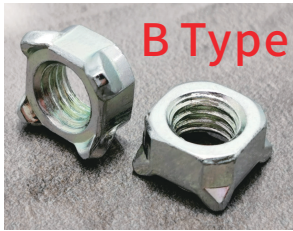
# AUTOMOTIVE FASTENERS NUTS SERIES

## JX-DIN928 Square Weld Nuts

Material: Carbon Steel, Stainless Steel



Carbon Steel: 5, 6, 8, 10, 12  
Standard: Q/T863-2011, Q371  
DIN928-2000  
GB/T13680-1992



Unit:mm

SIZE	Thread Code	P/N (Item A)		P/N (Item B)		k1		K		S		d1 min
		Carbon Steel	Stainless Steel	Carbon Steel	Stainless Steel	Max	Min	Max	Min	Max	Min	
M4	0.7	JX-D928-M4-A-ST	JX-D928-M4-A-SS	JX-Q371-M4-B-ST	JX-Q371-M4-B-SS	0.7	0.5	3.5	3.2	7	6.64	6.4
M5	0.8	JX-D928-M5-A-ST	JX-D928-M5-A-SS	JX-Q371-M5-B-ST	JX-Q371-M5-B-SS	0.9	0.7	4.2	3.9	8	7.64	8.2
M6	1	JX-D928-M6-A-ST	JX-D928-M6-A-SS	JX-Q371-M6-B-ST	JX-Q371-M6-B-SS	0.9	0.7	5	4.7	10	9.64	9.1
M8	1/1.25	JX-D928-M8-A-ST	JX-D928-M8-A-SS	JX-Q371-M8-B-ST	JX-Q371-M8-B-SS	1.1	0.9	6.5	6.14	13	12.57	12.8
M10	1.25/1.5	JX-D928-M10-A-ST	JX-D928-M10-A-SS	JX-Q371-M10-B-ST	JX-Q371-M10-B-SS	1.3	1.1	8	7.64	16	15.57	15.6
M12	1.25/1.75	JX-D928-M12-A-ST	JX-D928-M12-A-SS	JX-Q371-M12-B-ST	JX-Q371-M12-B-SS	1.5	1.3	9.5	9.14	18	17.57	17.4
M14	1.5/2	JX-D928-M14-A-ST	JX-D928-M14-A-SS	JX-Q371-M14-B-ST	JX-Q371-M14-B-SS	1.5	1.3	11	10.3	21	20.16	20.4
M16	1.5/2	JX-D928-M16-A-ST	JX-D928-M16-A-SS	JX-Q371-M16-B-ST	JX-Q371-M16-B-SS	1.7	1.5	13	12.3	24	23.16	22.4

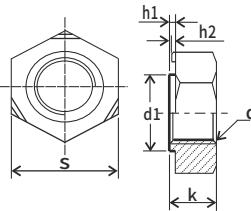
## JX-DIN929 HEX WELD NUTS



Carbon Steel



Stainless Steel



Material: Steel, Stainless steel  
Standard: GB/T13681-92  
Q/T860-2011  
DIN929-1988  
ISO21670

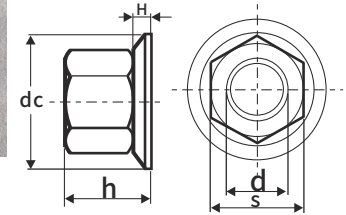
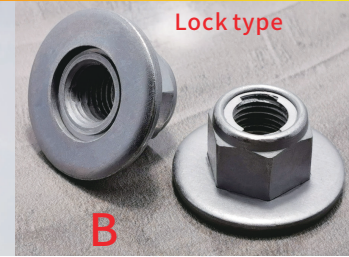
Unit:mm

SIZE	Thread Code	P/N		K		S		h1		h2		d1	
		Carbon Steel	Stainless Steel	Max	Min	Max	Min	Max	Min	Max	Min	Max	Min
M4	0.7	JX-D929-M4	JX-D929S-M4	3.5	3.2	9	8.78	0.65	0.55	0.35	0.25	6	5.91
M5	0.8	JX-D929-M5	JX-D929S-M5	4	3.7	10	9.78	0.7	0.6	0.4	0.3	7	6.91
M6	1.0	JX-D929-M6	JX-D929S-M6	5	4.7	11	10.73	0.75	0.6	0.4	0.3	8	7.91
M8	1.25	JX-D929-M8	JX-D929S-M8	6.5	6.14	14	13.73	0.9	0.75	0.5	0.35	10.5	10.39
M10	1.5/1.25	JX-D929-M10	JX-D929S-M10	8	7.64	17	16.73	1.15	0.95	0.65	0.5	12.5	12.39
M12	1.75/1.25	JX-D929-M12	JX-D929S-M12	10	9.64	19	18.67	1.4	1.2	0.8	0.6	14.8	14.69
M14	2/1.5	JX-D929-M14	JX-D929S-M14	11	10.57	22	21.67	1.8	1.6	1	0.8	16.8	16.69
M16	2/1.5	JX-D929-M16	JX-D929S-M16	13	12.57	24	23.67	1.8	1.6	1	0.7	18.8	18.67

# AUTOMOTIVE FASTENERS NUTS SERIES

## Hexagon flange washer nuts

Standard : Q300  
Carbon Steel Grade : 8, 10, 12  
Material : Carbon steel and  
Stainless Steel

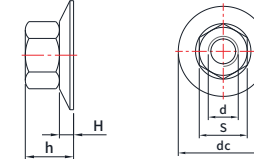
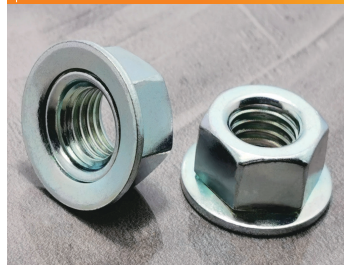


Unit:mm

Remark: Various non-standard specifications  
can be ordered according to guest  
requirements

SIZE	Thread Code	P/N		P/N		h		S		dc		H	
		Carbon Steel	Stainless Steel	Carbon Steel	Stainless Steel	Max	Min	Max	Min	Max	Min	Max	Min
M5	0.8	JX-Q300-M5-A-ST	JX-Q300-M5-A-SS	JX-Q300-M5-B-ST	JX-Q300-M5-B-SS	6.65	8	7.78	15	14.57	1.95	1.7	
M6	1	JX-Q300-M6-A-ST	JX-Q300-M6-A-SS	JX-Q300-M6-B-ST	JX-Q300-M6-B-SS	7.5	10	9.78	18	17.57	2.3	2.05	
M8	1.25	JX-Q300-M8-A-ST	JX-Q300-M8-A-SS	JX-Q300-M8-B-ST	JX-Q300-M8-B-SS	9.7	13	12.73	22	21.48	2.9	2.6	
M10	1.5	JX-Q300-M10-A-ST	JX-Q300-M10-A-SS	JX-Q300-M10-B-ST	JX-Q300-M10-B-SS	12	16	15.73	27	26.48	3.6	3.25	
M12	1.5/1.75	JX-Q300-M12-A-ST	JX-Q300-M12-A-SS	JX-Q300-M12-B-ST	JX-Q300-M12-B-SS	14.9	18	17.73	30	29.48	4.1	3.75	
M16	1.5/2	JX-Q300-M16-A-ST	JX-Q300-M16-A-SS	JX-Q300-M16-B-ST	JX-Q300-M16-B-SS	19.45	24	23.67	39	38.38	4.65	4.3	
M18	1.5	JX-Q300-M18-A-ST	JX-Q300-M18-A-SS	JX-Q300-M18-B-ST	JX-Q300-M18-B-SS	27	27	26.67	40	/	/	4.5	
M20	2.5	JX-Q300A-M20-A-ST	JX-Q300A-M20-A-SS	JX-Q300-M20-B-ST	JX-Q300-M20-B-SS	30	30	29.67	45	/	/	4.5	
M22	1.5	JX-Q300A-M22-A-ST	JX-Q300A-M22-A-SS	JX-Q300-M22-B-ST	JX-Q300-M22-B-SS	33	33	32.61	49	/	/	4.5	

## NFE 25-415-1986 Hexagon nut with washer pressed smooth conical washer A

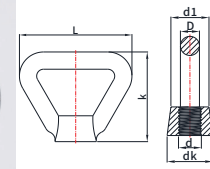


Standard : NFE25-415-1986  
Carbon Steel Grade : 8, 10, 12  
Material : Carbon steel and  
Stainless Steel

Unit:mm

Size	Pitch	P/N		h		S		dc		H	
		Carbon Steel	Stainless Steel	max.	min.	max.	min.	max.	min.	max.	min.
M5	0.8	JX-NFE25-M5-ST	JX-NFE25-M5-SS	6.65	8	7.78	15	14.57	1.95	1.7	
M6	1	JX-NFE25-M6-ST	JX-NFE25-M6-SS	7.5	10	9.78	18	17.57	2.3	2.05	
M8	1.25	JX-NFE25-M8-ST	JX-NFE25-M8-SS	9.7	13	12.73	22	21.48	2.9	2.6	
M10	1.5	JX-NFE25-M10-ST	JX-NFE25-M10-SS	12	16	15.73	27	26.48	3.6	3.25	
M12	1.75	JX-NFE25-M12-ST	JX-NFE25-M12-SS	14.9	18	17.73	30	29.48	4.1	3.75	
M16	2	JX-NFE25-M16-ST	JX-NFE25-M16-SS	19.45	24	23.67	39	38.38	4.65	4.3	

## J-XGB/T63-1988 Annular nuts



Thread: manufactured according to H6  
(GB 196, GB197)  
Material: ZHMn 58-2  
Acceptance and packaging: GB 90

Unit:mm

Size	P/N		dk	d1	m	k	L	D
	Carbon Steel	Stainless Steel						
M12	JX-GB63-M12-ST	JX-GB63-M12-SS	24	20	15	52	66	10
M14	JX-GB63-M14-ST	JX-GB63-M14-SS	24	20	15	52	66	10
M16	JX-GB63-M16-ST	JX-GB63-M16-SS	30	26	18	60	76	12
M18	JX-GB63-M18-ST	JX-GB63-M18-SS	30	26	18	60	76	12
M20	JX-GB63-M20-ST	JX-GB63-M20-SS	36	30	22	72	86	13
M22	JX-GB63-M22-ST	JX-GB63-M22-SS	36	30	22	72	86	13
M24	JX-GB63-M24-ST	JX-GB63-M24-SS	46	38	26	84	98	14