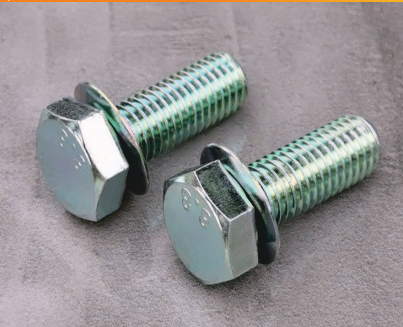


JX AUTOMOTIVE SCREWS FASTENERS SERIES

JX-Q141 Hexagon head bolts with conical spring washers



Material:
1. Carbon Steel: 5, 8, 6, 8, 8, 8, 10, 9
2. Stainless Steel: SUS304, SUS316

Standard: Q141
(QC/T 600-1999)

Bolt Standard: Q150B

Material: Carbon Steel, Stainless Steel, Brass, Aluminum, Titanium

Surface treatment: ROHS zinc, nickel, zinc-nickel alloy, dacromet, copper

Part Number Designation
JX-Q141-M5-12-SS

Type Thread Long Material and Code Code Code Code
Material: Stainless Steel

Part Number Designation
JX-Q141-M5-12-ST

Type Thread Long Material and Code Code Code Code
Material: Carbon Steel

The form of the polished rod attaches

Unit:mm

Size d	Thread Code	P/N		L Long	a _{max}	r _{min}	d ₂		S ₁	
		Carbon Steel	Stainless steel				Enlarge series	Standard series	Enlarge series	Standard series
M5	0.8	JX-Q141-M5-L-ST	JX-Q141-M5-L-SS	12 (14) 16 (18) 20 (38) 40 45 50	1.6	0.1	15	11	1.4	1.2
M6	1.0	JX-Q141-M6-L-ST	JX-Q141-M6-L-SS	(14) 16 (18) 20 (22) 50 55 60	2	0.1	18	12	1.7	1.4
M8	1.25	JX-Q141-M8-L-ST	JX-Q141-M8-L-SS	16 (18) 20 (22) 25 70 75 80	2.5	0.1	22	16	2.2	1.9
M10	1.5	JX-Q141-M10-L-ST	JX-Q141-M10-L-SS	(18) 20 (22) 25 (28) 85 90 100	3	0.1	27	20	2.8	2.2
M12	1.75	JX-Q141-M12-L-ST	JX-Q141-M12-L-SS	20 (22) 25 (28) 30 85 90 100	3.5	0.15	30	24	3.2	2.8

Remark: 1. The length L can customize according to customer's need;

JX-Q142 Hexagon Head screw and spring washer assemblies



Material:
1. Carbon Steel: 5, 8, 6, 8, 8, 8, 10, 9
2. Stainless Steel: SUS304, SUS316

Standard: Q142
(GB/T 9074.15-1988)

Bolt Standard: Q150B

Spring Washer Standard: Q406

Material: Carbon Steel, Stainless Steel, Brass, Aluminum, Titanium

Surface treatment: ROHS zinc, nickel, zinc-nickel alloy, dacromet

Part Number Designation
JX-Q142-M3-8-ST

Type Thread Long Material and Code Code Code Code
Material: Carbon Steel

Part Number Designation
JX-Q142-M3-8-SS

Type Thread Long Material and Code Code Code Code
Material: Stainless Steel

The form of the polished rod attaches

Unit:mm

Size d	Pitch P	P/N		L Long	a _{max}	d _{a max}	r _{min}	H Nominal	d ₂ ' Reference
		Carbon Steel	Stainless steel						
M3	0.5	JX-Q142-M3-L-ST	JX-Q142-M3-L-SS	8 10 12 16 20 25 30	1.0	2.8	由工艺控制/By the process control	1.6	5.23
M4	0.75	JX-Q142-M4-L-ST	JX-Q142-M4-L-SS	10 12 16 20 25 30 35	1.4	3.8		2.2	6.78
M5	0.8	JX-Q142-M5-L-ST	JX-Q142-M5-L-SS	12 16 20 25 30 35 40	1.6	4.7		2.6	8.75
M6	1.0	JX-Q142-M6-L-ST	JX-Q142-M6-L-SS	16 20 25 30 35 40 45 50	2.0	5.6		3.2	10.71
M8	1.25	JX-Q142-M8-L-ST	JX-Q142-M8-L-SS	20 25 30 35 40 45 50 (55) 60 (65)	2.5	7.5	0.1	4.0	13.64
M10	1.5	JX-Q142-M10-L-ST	JX-Q142-M10-L-SS	25 30 35 40 45 50 70 80	3.0	9.4	0.1	5.0	16.59
M12	1.75	JX-Q142-M12-L-ST	JX-Q142-M12-L-SS	30 35 40 45 50 (55) 60 (65) 90 100	3.5	11.2	0.1	6.0	19.53

Remark: 1. The length L can customize according to customer's need;
2. Except a_{max}, d_{max}, r_{min}, other according to the Q150B.

Remark: Material and surface treatment can also be manufactured according to customer requirements

JX AUTOMOTIVE SCREWS FASTENERS SERIES

JX-Q144 Hexagon head bolts and external serrated lock washer assembly



Standard: Q144
(GB/T 9074.16-1988)

Bolt Standard: Q150B

External Serrated Washers-Standard: Q412

Material: Carbon Steel, Stainless Steel, Brass, Aluminum, Titanium

Surface treatment: ROHS zinc, nickel, zinc-nickel alloy, dacromet

Part Number Designation
JX-Q144-M3-L-SS

Type Thread Long Material and Code Code Code Code
Material: Stainless Steel

Part Number Designation
JX-Q144-M3-8-ST

Type Thread Long Material and Code Code Code Code
Material: Carbon Steel

The form of the polished rod attaches

Unit:mm

Size d	Pitch P	P/N		L Long	a _{max}	d _{a max}	r _{min}	H ≈	d ₂ Nominal
		Carbon Steel	Stainless steel						
M3	0.5	JX-Q144-M3-L-ST	JX-Q144-M3-L-SS	8 10 12 16 20 25 30	1.0	2.8	由工艺控制/By the process control	1.2	6
M4	0.75	JX-Q144-M4-L-ST	JX-Q144-M4-L-SS	10 12 16 20 25 30 35	1.4	3.8		1.5	8
M5	0.8	JX-Q144-M5-L-ST	JX-Q144-M5-L-SS	12 16 20 25 30 35 40	1.6	4.7		1.8	10
M6	1.0	JX-Q144-M6-L-ST	JX-Q144-M6-L-SS	16 20 25 30 35 40 45 50	2.0	5.6		1.8	11
M8	1.25	JX-Q144-M8-L-ST	JX-Q144-M8-L-SS	20 25 30 35 40 45 50 (55) 60 (65)	2.5	7.5	0.1	2.4	15
M10	1.5	JX-Q144-M10-L-ST	JX-Q144-M10-L-SS	25 30 35 40 45 50 70 80	3.0	9.4	0.1	3.0	18

JX-Q146B Hexagon bolts and spring washers, plain washers assemblies



Standard: Q146B
(GB/T 9074.17-1988)

Bolt Standard: Q150B

Washer Standard: Q407

Spring Washer Standard: Q406

Material: Carbon Steel, Stainless Steel, Brass, Aluminum, Titanium

Surface treatment: ROHS zinc, nickel, zinc-nickel alloy, dacromet

Part Number Designation
JX-Q146B-M3-8-ST

Type Thread Long Material and Code Code Code Code
Material: Carbon Steel

Part Number Designation
JX-Q146B-M3-8-SS

Type Thread Long Material and Code Code Code Code
Material: Stainless Steel

The form of the polished rod attaches

Unit:mm

Size d	Pitch P	P/N		L Long	a _{max}	d _{a max}	r _{min}	h Nominal	H Nominal	d ₂ Nominal	d ₂ ' Reference
		Carbon Steel	Stainless steel								
M3	0.5	JX-Q146B-M3-L-ST	JX-Q146B-M3-L-SS	8 10 12 16 20 25 30	1.0	2.8	By the process control	0.5	1.6	7	5.23
M4	0.75	JX-Q146B-M4-L-ST	JX-Q146B-M4-L-SS	10 12 16 20 25 30 35	1.4	3.8		0.8	2.2	9	6.78
M5	0.8	JX-Q146B-M5-L-ST	JX-Q146B-M5-L-SS	12 16 20 25 30 35 40	1.6	4.7		1.0	2.6	10	8.75
M6	1.0	JX-Q146B-M6-L-ST	JX-Q146B-M6-L-SS	16 20 25 30 35 40 45 50	2.0	5.6		1.6	3.2	12	10.71
M8	1.25	JX-Q146B-M8-L-ST	JX-Q146B-M8-L-SS	25 30 35 40 45 60 (65)	2.5	7.5	0.1	1.6	4.0	16	13.64
M10	1.5	JX-Q146B-M10-L-ST	JX-Q146B-M10-L-SS	30 35 40 45 50 70 80	3.0	9.4	0.1	2.0	5.0	20	16.59
M12	1.75	JX-Q146B-M12-L-ST	JX-Q146B-M12-L-SS	35 40 45 50 (55) 60 90 100	3.5	11.2	0.1	2.5	6.0	24	19.53

1. The length L can customize according to customer's need;
2. Try to avoid the specifications of the brackets;
3. Except a_{max}, d_{max}, r_{min}, other according to the Q150B.

Material:
1. Carbon Steel: 5, 8, 6, 8, 8, 8, 10, 9
2. Stainless Steel: SUS304, SUS316

Remark: Material and surface treatment can also be manufactured according to customer requirements