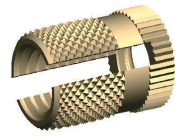
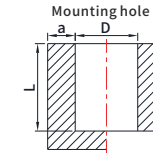
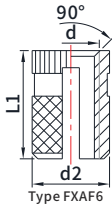


JX Threaded Inserts for Plastic Series

The Variants-Thread Inserts For Expansion Anchoring SPREDSERT 2



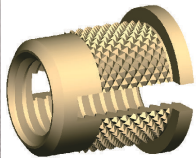
Material: Steel
Material: Carbon Steel, Stainless Steel, Brass, Aluminum, Titanium
Surface treatment: ROHS zinc, nickel, zinc-nickel alloy, Chromium, dacromet, copper



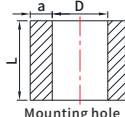
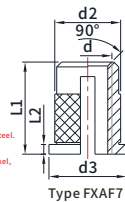
All dimensions are in millimeters

METRIC	THREAD SIZE	TYPE			L1	d2	D	L	a	Min
		STEEL	STAINLESS STEEL	BRASS						
M3	JX-FXAF6-M3-5.5-ST	JX-FXAF6-M3-5.5-SS	JX-FXAF6-M3-5.5-B	5	4.3	3.9	5.5	3		
M3.5	JX-FXAF6-M3.5-7-ST	JX-FXAF6-M3.5-7-SS	JX-FXAF6-M3.5-7-B	6.4	5.1	4.7	7	3.3		
M4	JX-FXAF6-M4-8.5-ST	JX-FXAF6-M4-8.5-SS	JX-FXAF6-M4-8.5-B	8	6	5.5	8.5	3.5		
M5	JX-FXAF6-M5-10-ST	JX-FXAF6-M5-10-SS	JX-FXAF6-M5-10-B	9.5	6.8	6.3	10	4		
M6	JX-FXAF6-M6-13.5-ST	JX-FXAF6-M6-13.5-SS	JX-FXAF6-M6-13.5-B	12.7	8.4	7.9	13.5	5		

The Variants-Thread Inserts For Expansion Anchoring SPREDSERT With Retaining Flange



Material: Steel
Material: Carbon Steel, Stainless Steel, Brass, Aluminum, Titanium
Surface treatment: ROHS zinc, nickel, zinc-nickel alloy, Chromium, dacromet, copper



All dimensions are in millimeters

METRIC	THREAD SIZE	TYPE			L1	d2	d3	L2	D	L	a	Min
		STEEL	STAINLESS STEEL	BRASS								
M3	JX-FXAF7-M3-4.5-ST	JX-FXAF7-M3-4.5-SS	JX-FXAF7-M3-4.5-B	4.8	4.3	5.5	0.5	3.9	4.5	3.2		
M3.5	JX-FXAF7-M3.5-6-ST	JX-FXAF7-M3.5-6-SS	JX-FXAF7-M3.5-6-B	6.4	5.1	6.3	0.7	4.7	6	3.6		
M4	JX-FXAF7-M4-7.5-ST	JX-FXAF7-M4-7.5-SS	JX-FXAF7-M4-7.5-B	8	6	7	0.8	5.5	7.5	4		
M5	JX-FXAF7-M5-9-ST	JX-FXAF7-M5-9-SS	JX-FXAF7-M5-9-B	9.5	6.8	8	1	6.3	9	4.8		
M6	JX-FXAF7-M6-12-ST	JX-FXAF7-M6-12-SS	JX-FXAF7-M6-12-B	12.7	8.4	9.5	1.3	7.9	12	6		
M8	JX-FXAF7-M8-12-ST	JX-FXAF7-M8-12-SS	JX-FXAF7-M8-12-B	12.7	9.9	11	1.3	9.4	12	7.1		

The Variants-Thread Inserts For Expansion Anchoring SPREDSERT 1And 2

Torque Values For M3 To M8 Tested In Different Materials

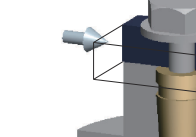
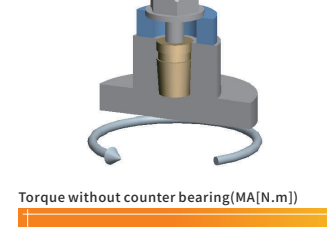
METRIC	Torque [N.m] without counter bearing		M3	M4	M5	M6	M8
	ABS	MA[Nm]					
METRIC	ABS	MA[Nm]	0.72	1.35	1.74	4.2	6.6
	PC	MA[Nm]	0.96	1.32	2.46	5.7	10.8
	PA	MA[Nm]	0.63	1.44	2.25	3.3	7.2
	PE/PP	MA[Nm]	0.6	1.26	1.5	3	5.4

METRIC	Torque [N.m] with counter bearing		M3	M4	M5	M6	M8
	ABS	MR[Nm]					
METRIC	ABS	MR[Nm]	1.8	3.3	4.8	10.2	19.8
	PC	MR[Nm]	2.1	3.66	6.3	12.3	28.8
	PA	MR[Nm]	1.5	3.36	5.7	10.5	21
	PE/PP	MR[Nm]	1.62	3	4.68	9.3	17.4

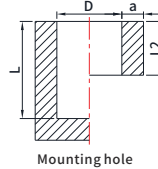
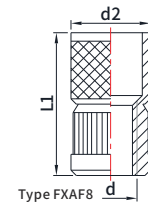
Remark: We only show part of the specifications, we can also produce various sizes according to the customer's requirements

JX Threaded Inserts for Plastic Series

The Variants-Thread Inserts For Expansion Anchoring QUICKSERT Expansion Type 1230



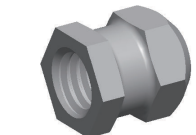
Material: Steel
Material: Carbon Steel, Stainless Steel, Brass, Aluminum, Titanium
Surface treatment: ROHS zinc, nickel, zinc-nickel alloy, Chromium, dacromet, copper



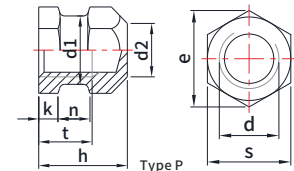
All dimensions are in millimeters

METRIC	THREAD SIZE	TYPE			L1	L2	d2	D	L	a	a
		STEEL	STAINLESS STEEL	BRASS							
M3	JX-FXAF8-M3-8.8-ST	JX-FXAF8-M3-8.8-SS	JX-FXAF8-M3-8.8-B	8	4.8	5.5	5.5	8.8	4.8	2	
M4	JX-FXAF8-M4-11.8-ST	JX-FXAF8-M4-11.8-SS	JX-FXAF8-M4-11.8-B	10.5	6.3	6.5	6.5	11.8	6.3	2	
M5	JX-FXAF8-M5-15.2-ST	JX-FXAF8-M5-15.2-SS	JX-FXAF8-M5-15.2-B	13.5	8.2	7.5	7.5	15.2	8.2	2.5	
M6	JX-FXAF8-M6-18.8-ST	JX-FXAF8-M6-18.8-SS	JX-FXAF8-M6-18.8-B	16	9.8	9	9.5	18.8	9.8	3	
M8	JX-FXAF8-M8-21-ST	JX-FXAF8-M8-21-SS	JX-FXAF8-M8-21-B	19	11.5	12	12	21	11.5	4	

DIN 16903(P)-1974 Hexagonal Closed Nut With Slot In The Middle-Type P



Material: Steel
Material: Carbon Steel, Stainless Steel, Brass, Aluminum, Titanium
Surface treatment: ROHS zinc, nickel, zinc-nickel alloy, Chromium, dacromet, copper



All dimensions are in millimeters

METRIC	THREAD SIZE	TYPE			k	n	d1	d2	e	t	h	s
		STEEL	STAINLESS STEEL	BRASS								
METRIC	M3	JX-DIN16903P-M3-5.5-ST	JX-DIN16903P-M3-5.5-SS	JX-DIN16903P-M3-5.5-B	1.4	1.8	3.8	2.8	5.8	3	5.5	5
	(M3.5)	JX-DIN16903P-M3.5-6-ST	JX-DIN16903P-M3.5-6-SS	JX-DIN16903P-M3.5-6-B	1.5	1.8	4.5	3.5	6.1	3.5	6	5.5
METRIC	M4	JX-DIN16903P-M4-7-ST	JX-DIN16903P-M4-7-SS	JX-DIN16903P-M4-7-B	1.5	2.5	5	4	6.9	4	7	6
	M5	JX-DIN16903P-M5-8.3-ST	JX-DIN16903P-M5-8.3-SS	JX-DIN16903P-M5-8.3-B	1.8	3	6.4	5	8.1	5	8.3	7
	M6	JX-DIN16903P-M6-9.8-ST	JX-DIN16903P-M6-9.8-SS	JX-DIN16903P-M6-9.8-B	2	3.5	7.4	6	10.4	6	9.8	9
	M8	JX-DIN16903P-M8-12.6-ST	JX-DIN16903P-M8-12.6-SS	JX-DIN16903P-M8-12.6-B	2.8	4.5	10.4	7	12.7	8	12.6	11
	M10	JX-DIN16903P-M10-15-ST	JX-DIN16903P-M10-15-SS	JX-DIN16903P-M10-15-B	3.5	5	13	10	16.2	10	15	14
	M12	JX-DIN16903P-M12-17.8-ST	JX-DIN16903P-M12-17.8-SS	JX-DIN16903P-M12-17.8-B	4	6	17	12	21.9	12	17.8	19

Remark: We only show part of the specifications, we can also produce various sizes according to the customer's requirements