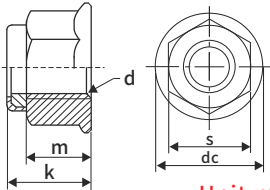


# JX HARDWARE NUTS FASTENERS SERIES

JX-Q338, JX-DIN6926 Prevailing torque type hexagon nuts with flange (with non-metallic insert)

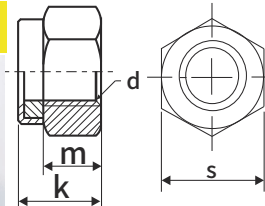
Material: Carbon Steel, Stainless steel, Brass, Aluminum, Titanium  
Standard: DIN6926-1983, Q338  
Carbon Steel Grade: 4, 8, 10, 12



Unit:mm

SIZE	Thread Code	P/N				dc	K		m	S	
		Carbon Steel	Stainless Steel	Titanium	Aluminum		Max	Min		Max	Min
M5	0.8	JX-Q338M5-ST	JX-Q338M5-SS	JX-Q338M5-Ti	JX-Q338M5-Al	11.8	7.1	6.74	4.7	8	7.78
M6	1	JX-Q338M6-ST	JX-Q338M6-SS	JX-Q338M6-Ti	JX-Q338M6-Al	14.2	9.1	8.74	5.7	10	9.78
M8	1/1.25	JX-Q338M8-ST	JX-Q338M8-SS	JX-Q338M8-Ti	JX-Q338M8-Al	17.9	11.1	10.67	7.6	13	12.73
M10	1/1.25/1.5	JX-Q338M10-ST	JX-Q338M10-SS	JX-Q338M10-Ti	JX-Q338M10-Al	21.8	13.5	13.07	9.6	15	14.73
M12	1.25/1.5/1.75	JX-Q338M12-ST	JX-Q338M12-SS	JX-Q338M12-Ti	JX-Q338M12-Al	26	16.1	15.67	11.6	18	17.73
M14	1.5/2	JX-Q338M14-ST	JX-Q338M14-SS	JX-Q338M14-Ti	JX-Q338M14-Al	29.9	18.2	17.68	13.3	21	20.67
M16	1.5/2	JX-Q338M16-ST	JX-Q338M16-SS	JX-Q338M16-Ti	JX-Q338M16-Al	34.5	20.3	19.46	15.3	24	23.67
M20	1.5/2.5	JX-Q338M20-ST	JX-Q338M20-SS	JX-Q338M20-Ti	JX-Q338M20-Al	42.8	24.8	23.96	18.9	30	29.16

JX-Q326, JX-DIN985 Prevailing torque type hexagon nylon nuts (with non-metallic insert)-Style 2



Material: Carbon Steel, Stainless steel, Brass, Aluminum, Titanium  
Standard:  
1, Q326  
2, GB6182-1985  
3, DIN985  
Steel Grade: 5, 8, 10, 12

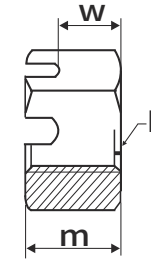
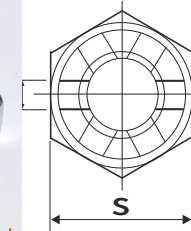
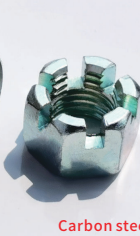
Unit:mm

SIZE	Thread Code	P/N				m	K <sub>Q</sub>		K <sub>DIN</sub>		S	
		Carbon Steel	Stainless Steel	Brass	Aluminum		Standard	Standard	Min	Max	Min	Max
M5	0.8	JX-Q326M5-ST	JX-Q326M5-SS	JX-Q326M5-B	JX-Q326M5-Al	3.2	7.2	6.62	5	4.7	8	7.78
M6	1	JX-Q326M6-ST	JX-Q326M6-SS	JX-Q326M6-B	JX-Q326M6-Al	4.0	8.5	7.92	6	5.7	10	9.78
M8	1/1.25	JX-Q326M8-ST	JX-Q326M8-SS	JX-Q326M8-B	JX-Q326M8-Al	5.5	10.2	9.5	8	7.4	13	12.73
M10	1/1.25/1.5	JX-Q326M10-ST	JX-Q326M10-SS	JX-Q326M10-B	JX-Q326M10-Al	6.5	12.8	12.1	10	9.64	16	15.73
M12	1.25/1.5/1.75	JX-Q326M12-ST	JX-Q326M12-SS	JX-Q326M12-B	JX-Q326M12-Al	8.0	16.1	15.4	12	11.57	18(19)	17.73(18.67)
M14	1.5/2	JX-Q326M14-ST	JX-Q326M14-SS	JX-Q326M14-B	JX-Q326M14-Al	9.5	18.3	17	14	13.3	21(22)	20.67(21.67)
M16	1.5/2	JX-Q326M16-ST	JX-Q326M16-SS	JX-Q326M16-B	JX-Q326M16-Al	10.5	20.7	19.4	16	15.3	24	23.67
M20	1.5/2.5	JX-Q326M20-ST	JX-Q326M20-SS	JX-Q326M20-B	JX-Q326M20-Al	14	25.1	23	20	18.7	30	29.16
M24	2/3	JX-Q326M24-ST	JX-Q326M24-SS	JX-Q326M24-B	JX-Q326M24-Al	15	29.5	27.4	24	22.7	36	35
M30	2/3.5	JX-Q326M30-ST	JX-Q326M30-SS	JX-Q326M30-B	JX-Q326M30-Al	19	35.6	33.1	30	28.4	46	45
M36	3/4	JX-Q326M36-ST	JX-Q326M36-SS	JX-Q326M36-B	JX-Q326M36-Al	25	42.3	40.1	36	34.4	55	53.8

# JX HARDWARE NUTS FASTENERS SERIES

JX-DIN935 Hexagon Thin Castle Nuts

Stainless steel

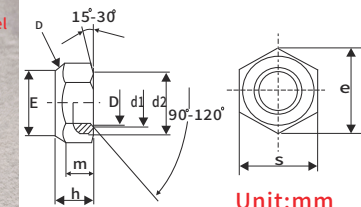


Material: Carbon Steel, Stainless Steel  
Standard:  
1, DIN935-1-1987  
2, DIN935-3-1987  
Steel Grade: 8, 10, 12

Unit:mm

Size	Thread Code	P/N		S		n		m		W	
		Carbon Steel	Stainless Steel	Max	Min	Max	Min	Max	Min	Max	Min
M4	0.7	JX-D935-M4-ST	JX-D935-M4-SS	7	6.78	1.45	1.2	5	4.7	3.2	2.9
M5	0.8	JX-D935-M5-ST	JX-D935-M5-SS	8	7.78	1.65	1.4	6	5.7	4.0	3.7
M6	1.0	JX-D935-M6-ST	JX-D935-M6-SS	10	9.78	2.25	2	7.5	7.14	5.0	4.7
M7	1.0	JX-D935-M7-ST	JX-D935-M7-SS	11	10.73	2.25	2	8	7.64	5.5	5.2
M8	1/1.25	JX-D935-M8-ST	JX-D935-M8-SS	13	12.73	2.75	2.5	9.5	9.14	6.5	6.14
M10	1/1.25/1.5	JX-D935-M10-ST	JX-D935-M10-SS	16(17)	15.73(16.73)	3.05	2.8	12	11.57	8	7.64
M12	1.25/1.5/1.75	JX-D935-M12-ST	JX-D935-M12-SS	18(19)	17.73(18.67)	3.8	3.5	15	14.57	10	9.64
M14	1.5/2	JX-D935-M14-ST	JX-D935-M14-SS	21(22)	20.67(21.67)	3.8	3.5	16	15.57	11	10.57
M16	1.5/2	JX-D935-M16-ST	JX-D935-M16-SS	24	23.67	4.8	4.5	19	18.48	13	12.57
M18	1.5/2/2.5	JX-D935-M18-ST	JX-D935-M18-SS	27	26.16	4.8	4.5	21	20.16	15	14.57
M20	1.5/2/2.5	JX-D935-M20-ST	JX-D935-M20-SS	30	29.16	4.8	4.5	22	21.16	16	15.57
M22	1.5/2/2.5	JX-D935-M22-ST	JX-D935-M22-SS	32(34)	31(33)	5.8	5.5	26	25.16	18	17.57
M24	2/3	JX-D935-M24-ST	JX-D935-M24-SS	36	35	5.8	5.5	27	26.16	19	18.48
M27	2/3	JX-D935-M27-ST	JX-D935-M27-SS	41	40	5.8	5.5	30	29.16	22	21.48
M30	2/3.5	JX-D935-M30-ST	JX-D935-M30-SS	46	45	7.36	7	33	32	24	23.48
M33	2/3.5	JX-D935-M33-ST	JX-D935-M33-SS	50	49	7.36	7	35	34	26	25.48
M36	3/4	JX-D935-M36-ST	JX-D935-M36-SS	55	53.8	7.36	7	38	37	29	28.48

Prevailing torque type all-metal hexagon nuts



Unit:mm

SIZE	Thread Code	P/N		E	d2	e	m	d1		h		S	
		Carbon Steel	Stainless Steel					Min	Max	Min	Max	Min	Max
M5	0.8	JX-D980-M5-ST	JX-D980-M5-SS	≤7.78	6.88	8.79	3.52	5.75	5.0	5.1	4.8	8.0	7.78
M6	1.0	JX-D980-M6-ST	JX-D980-M6-SS	≤9.78	8.88	11.05	3.92	6.75	6.0	6.0	5.4	10	9.78
M8	1.25	JX-D980-M8-ST	JX-D980-M8-SS	≤12.73	11.63	14.38	5.15	8.75	8.0	8.0	7.14	13	12.73
M10	1.5	JX-D980-M10-ST	JX-D980-M10-SS	≤15.73	14.63	17.77	6.43	10.8	10.0	10.0	8.94	16	15.73
M12	1.75	JX-D980-M12-ST	JX-D980-M12-SS	≤17.73	16.63	20.03	8.3	13	12	12	11.57	18	17.73
M14	2.0	JX-D980-M14-ST	JX-D980-M14-SS	≤20.67	19.64	23.36	9.68	15.1	14.0	14.1	13.4	21	20.67
M16	2.0	JX-D980-M16-ST	JX-D980-M16-SS	≤23.67	22.49	26.75	11.28	17.3	16.0	16.4	15.7	24	23.67
M20	2.5	JX-D980-M20-ST	JX-D980-M20-SS	≤29.16	27.7	32.95	13.52	21.6	20.0	20.3	19.0	30	29.16
M24	3.0	JX-D980-M24-ST	JX-D980-M24-SS	≤35	33.25	39.55	16.16	25.9	24.0	23.9	22.6	36	35
M30	3.5	JX-D980-M30-ST	JX-D980-M30-SS	≤45	42.75	50.85	19.44	32.4	30	30	27.3	46	45
M36	4.0	JX-D980-M36-ST	JX-D980-M36-SS	≤53.8	51.11	60.79	23.52	38.9	36	36	33.1	55	53.8