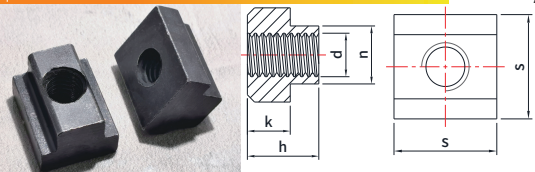


HW HARDWARE FASTENERS NUTS SERIES

GB/T 12868-1991 Nut for T-groove

Material: Steel, Stainless steel
Aluminum



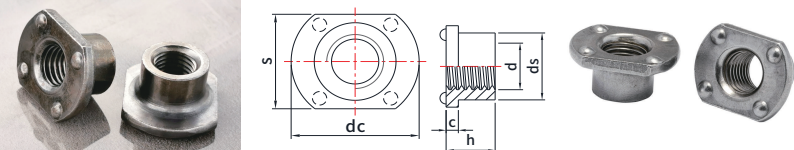
Surface treatment: zinc, nickel, zinc-nickel alloy, dacromet, etc. surface treatment can also be done according to customer requirements

Unit:mm

Size	P/N			Pitch	n			s			k		h
	Carbon steel	Stainless steel	Aluminum		nom.	max.	min.	max.	min.	max.	min.		
M4	JX-GB12868-M4-ST	JX-GB12868-M4-SS	JX-GB12868-M4-AL	0.7	5	4.7	4.5	9	8.5	2.5	2.2	6.5	
M5	JX-GB12868-M5-ST	JX-GB12868-M5-SS	JX-GB12868-M5-AL	0.8	6	5.7	5.5	10	9.5	4	3.5	8	
M6	JX-GB12868-M6-ST	JX-GB12868-M6-SS	JX-GB12868-M6-AL	1	8	7.7	7.5	13	12.5	6	5.5	10	
M8	JX-GB12868-M8-ST	JX-GB12868-M8-SS	JX-GB12868-M8-AL	1.25	10	9.7	9.5	15	14.5	6	5.5	12	
M10	JX-GB12868-M10-ST	JX-GB12868-M10-SS	JX-GB12868-M10-AL	1.5	12	11.7	11.4	18	17.5	7	6.5	14	
M12	JX-GB12868-M12-ST	JX-GB12868-M12-SS	JX-GB12868-M12-AL	1.75	14	13.7	13.4	22	21.5	8	7.5	16	
M16	JX-GB12868-M16-ST	JX-GB12868-M16-SS	JX-GB12868-M16-AL	2	18	17.7	17.4	28	27.5	10	9.5	20	
M20	JX-GB12868-M20-ST	JX-GB12868-M20-SS	JX-GB12868-M20-AL	2.5	22	21.7	21.4	34	33.5	14	13.5	28	
M24	JX-GB12868-M24-ST	JX-GB12868-M24-SS	JX-GB12868-M24-AL	3	28	27.7	27.4	43	42	18	17	36	
M30	JX-GB12868-M30-ST	JX-GB12868-M30-SS	JX-GB12868-M30-AL	3.5	36	35.6	35.3	53	52	23	22	44	
M36	JX-GB12868-M36-ST	JX-GB12868-M36-SS	JX-GB12868-M36-AL	4	42	41.6	41.3	64	63	28	27	52	
M42	JX-GB12868-M42-ST	JX-GB12868-M42-SS	JX-GB12868-M42-AL	4.5	48	47.6	47.3	75	74	32	31	60	
M48	JX-GB12868-M48-ST	JX-GB12868-M48-SS	JX-GB12868-M48-AL	5	52	53.6	53.2	85	84	36	35	70	

YJT 90620 Four point T-Shape Weld Nuts

Material: Carbon Steel, Stainless steel

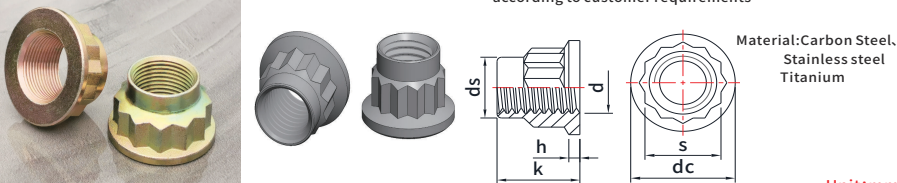


Unit:mm

Size	Carbon Steel P/N		Stainless Steel P/N		dc	s	h	ds	c
M8	JX-YJT90620-M8-ST	JX-YJT90620-M8-SS			18	14	8	11.5	2

JB/T 6687-1993 12-Spline Flange Nuts

Surface treatment: zinc, nickel, zinc-nickel alloy, dacromet, etc. surface treatment can also be done according to customer requirements



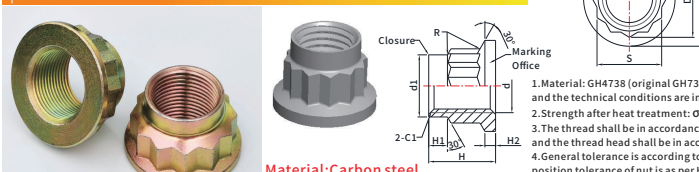
Material: Carbon Steel, Stainless steel, Titanium

Unit:mm

Size	P/N			ds		k	s		h		dc			
	Carbon Steel	Stainless Steel	Titanium	max.	min.		max.	min.	max.	min.	max.	min.		
M6	JX-JBT6687-M6-ST	JX-JBT6687-M6-SS	JX-JBT6687-M6-Ti	7.1	7.04	9	9.18	8.82	8	7.88	1.2	0.95	11	10.82
M8	JX-JBT6687-M8-ST	JX-JBT6687-M8-SS	JX-JBT6687-M8-Ti	9.4	9.34	11	11.21	10.79	10	9.85	1.4	1.15	13	12.82
M10	JX-JBT6687-M10-ST	JX-JBT6687-M10-SS	JX-JBT6687-M10-Ti	11.5	11.44	12	12.21	11.79	12	11.85	1.6	1.35	16.5	16.32
M12	JX-JBT6687-M12-ST	JX-JBT6687-M12-SS	JX-JBT6687-M12-Ti	13.5	13.44	17	17.21	16.79	14	13.82	2.5	2.25	21	20.79
M16	JX-JBT6687-M16-ST	JX-JBT6687-M16-SS	JX-JBT6687-M16-Ti	17.7	17.63	20	20.26	19.74	16	18.79	2.5	2.25	26.7	26.49
M20	JX-JBT6687-M20-ST	JX-JBT6687-M20-SS	JX-JBT6687-M20-Ti	21.9	21.82	23	23.26	22.74	24	23.79	3	2.75	31.2	30.95
M24	JX-JBT6687-M24-ST	JX-JBT6687-M24-SS	JX-JBT6687-M24-Ti	26	25.92	32	32.31	31.69	30	29.79	4.5	4.2	41.3	41.05
M27	JX-JBT6687-M27-ST	JX-JBT6687-M27-SS	JX-JBT6687-M27-Ti	29	28.92	34	34.31	33.69	32	31.75	4.5	4.2	41.3	41.05
M30*3	JX-JBT6687-M30-ST	JX-JBT6687-M30-SS	JX-JBT6687-M30-Ti	33	32.92	39	39.31	38.69	36	35.75	5.5	5.2	54	53.7
M33*3	JX-JBT6687-M33-ST	JX-JBT6687-M33-SS	JX-JBT6687-M33-Ti	36	35.9	41	41.31	40.69	41	40.75	5.5	5.2	54	53.7
M36*3	JX-JBT6687-M36-ST	JX-JBT6687-M36-SS	JX-JBT6687-M36-Ti	39	38.9	44	44.31	43.69	41	40.75	6.5	6.14	59	58.7
M39*3	JX-JBT6687-M39-ST	JX-JBT6687-M39-SS	JX-JBT6687-M39-Ti	43	42.9	49	49.31	48.69	46	45.75	7.5	7.14	63.5	63.2
M42*3	JX-JBT6687-M42-ST	JX-JBT6687-M42-SS	JX-JBT6687-M42-Ti	46	45.9	53	53.37	52.63	50	49.75	7.5	7.14	67.5	67.2
M45*3	JX-JBT6687-M45-ST	JX-JBT6687-M45-SS	JX-JBT6687-M45-Ti	49	48.9	57	57.37	56.63	55	54.7	8.5	8.14	71.5	71.2

HW HARDWARE FASTENERS NUTS SERIES

HB 8383-2013 GH4738 MJ thread 12 point self-locking nut



Material: Carbon steel, Stainless steel

- Material: GH4738 (original GH738), imported material w/play is allowed, and the technical conditions are in accordance with ams5780
- Strength after heat treatment: $\sigma_b \geq 1136\text{MPa}$.
- The thread shall be in accordance with GB 3.1a-2003 and GB 3.2a-2003, and the thread head shall be in accordance with GB 52-1985
- General tolerance is according to HB 5800-1999, and the shape and position tolerance of nut is as per HB 7361
- Other technical conditions are as per hb7686

Size	P/N		D1	D	d1	H	H1	H2			R			S	
	Carbon Steel	Stainless Steel						Nom	Max	Min	Nom	Max	Min	Max	Min
MJ8x1/4H5H	JX-HB8383-MJ8x1/4H5H-ST	JX-HB8383-MJ8x1/4H5H-SS	11.5	13	9.3	12	3.1	2	2.2	1.8	0.5	0.7	0.3	10	9.85
MJ10x1.25/4H5H	JX-HB8383-MJ10x1.25/4H5H-ST	JX-HB8383-MJ10x1.25/4H5H-SS	13.86	17	11.6	12.5	3.5	2	2.2	1.8	0.5	0.7	0.3	12	11.85

Unit:mm

YJT K-NUT

Surface treatment: zinc, nickel, zinc-nickel alloy, dacromet, etc. surface treatment can also be done according to customer requirements



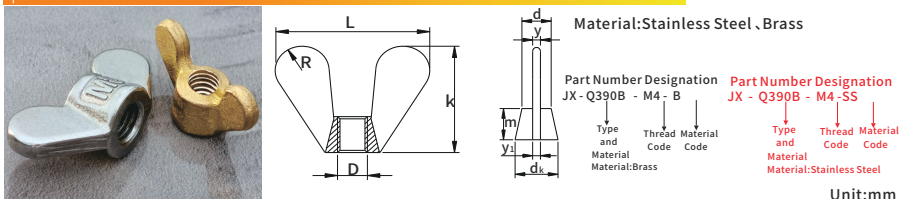
Material: Carbon Steel, Stainless steel

Unit:mm

Size	P/N		P Thread code	s						dc						k						h					
	Carbon Steel	Stainless Steel		304/420 steel			304/420 steel			304/420 steel			304/420 steel			304/420 steel			304/420 steel			304/420 steel					
				min.	max.	min.	max.	min.	max.	min.	max.	min.	max.	min.	max.	min.	max.	min.	max.	min.	max.	min.	max.				
M3	JX-M3K-ST	JX-M3K-SS	0.5	5.3	5.5	5.32	5.5	6.9	7.3	7.04	7.26	2.2	2.4	6.01	6.2	3	4	0.36	0.44								
M4	JX-M4K-ST	JX-M4K-SS	0.7	6.78	7	6.78	7	7.9	8.2	7.85	8.15	2.9	3.2	7.66	7.85	3.8	4.3	0.46	0.54								
M5	JX-M5K-ST	JX-M5K-SS	0.8	7.78	8	7.78	8	9	9.3	9.05	9.35	3.7	4	8.4	8.9	5.4	6.4	0.56	0.64								
M6	JX-M6K-ST	JX-M6K-SS	1	9.78	10	9.78	10	10.8	11.2	10.85	11.15	4.7	5	4.78	5	5.9	6.4	0.56	0.64								
M8	JX-M8K-ST	JX-M8K-SS	1.25	12.7	13	12.73	13	14.6	15	14.71	15.03	6.2	6.5	6.14	6.5	7.8	8.3	0.66	0.74								
4#	JX-M4#K-ST	JX-M4#K-SS	40	6.12	6.35	6.12	6.35	6.9	7.3	7.04	7.26	2.2	2.4	6.98	7.34	3	4	0.36	0.44								
6#	JX-M6#K-ST	JX-M6#K-SS	32	7.7	7.9	7.67	7.92	8.7	9.2	8.59	8.83	2.5	2.8	8.73	9.16	3.4	3.9	0.36	0.44								
8#	JX-M8#K-ST	JX-M8#K-SS	32	8.43	8.73	8.43	8.73	9.4	9.8	9.4	9.67	2.9	3.2	9.6	10.08	3.8	4.3	0.46	0.54								
10#	JX-M10#K-ST	JX-M10#K-SS	24/32	9.3	9.5	9.19	9.52	10	10.6	10.04	10.31	2.9	3.2	2.98	3.3	3.85	4.4	0.46	0.54								
1/4	JX-M1/4K-ST	JX-M1/4K-SS	20	10.87	11.12	10.74	11.12	12.5	12.8	12.55	12.85	4.4	4.76	4.53	4.9	5.7	6.3	0.56	0.64								
5/16	JX-M5/16K-ST	JX-M5/16K-SS	18	12.42	12.7	12.43	12.7	14.6	15	14.71	15.03	6.3	6.7	6.51	6.93	8.1	8.7	0.66	0.74								

JX-Q390B Wing nuts-Dome Wing

Standard: Q390B
(GB/T 62.1-2004)



Material: Stainless Steel, Brass

Part Number Designation
JX-Q390B-M4-B
↓ Type and Material Code
↓ Thread Code
↓ Material: Brass

Part Number Designation
JX-Q390B-M4-SS
↓ Type and Material Code
↓ Thread Code
↓ Material: Stainless Steel

Unit:mm

Thread Size	P/N			dk	d	L	k	m	y	y1	R
	Carbon Steel	Brass	Stainless steel								
M4	JX-Q390B-M4-ST	JX-Q390B-M4-B	JX-Q390B-M4-SS	8	7	24	10	4	1.5	2	3.5
M5	JX-Q390B-M5-ST	JX-Q390B-M5-B	JX-Q390B-M5-SS	10	8	28	12	5	2	2.5	4.5
M6	JX-Q390B-M6-ST	JX-Q390B-M6-B	JX-Q390B-M6-SS	12	10	32	14	6	2.5	3	5
M8	JX-Q390B-M8-ST	JX-Q390B-M8-B	JX-Q390B-M8-SS	15	13	40	18	8	3	3.5	6
M10	JX-Q390B-M10-ST	JX-Q390B-M10-B	JX-Q390B-M10-SS	18	15	48	22	10	3.5	4	7
M12	JX-Q390B-M12-ST	JX-Q390B-M12-B	JX-Q390B-M12-SS	22	19	58	27	12	4	5	8.5
(M14)	JX-Q390B-M14-ST	JX-Q390B-M14-B	JX-Q390B-M14-SS	26	23	64	30	14	5	6	9
M16	JX-Q390B-M16-ST	JX-Q390B-M16-B	JX-Q390B-M16-SS	30	26	72	32	14	6	7	10