

# JX HARDWARE NUTS FASTENERS SERIES

## JX-SR, JX-SF, JX-SA, JX-SK Precision lock nut

Precision lock nut is a kind of common nut widely used in machinery and other industries. The anti loose effect of lock nut mainly depends on the mutual force between nut and bolt engagement thread. Sak precision lock nut is mainly used in high-precision spindle, ball screw, precision measuring instrument and other working conditions. Because of its high precision, long service life and good locking force, it is widely favored by industry engineers.

(JX-SAK Precision Lock Nut)

(Purpose)

JX-SAK precision lock nut is widely used in precision mechanism which needs precision, strength and safety lock because of its effective improvement of assembly accuracy, improvement of spindle deflection, simple installation, not easy to loosen and extend the service life of workpiece.

JX-SAK precision lock nuts are available in machine tools, textile, printing, centrifuges, turbo compressors, air conditioners, land and marine operations, transportation equipment, aviation equipment, marine equipment, nuclear industry, agriculture and food industry, construction machinery, special machinery and other structural forms.

(Material)

JX-SAK precision lock nut is made of high quality 42 chrome molybdenum with blackened surface and oil soaked treatment. We can also choose 45 steel, 40 chromium, stainless steel and other nuts of different materials. The surface of nuts can also be customized according to different use environment, such as zinc plating, nickel plating, phosphating and other treatments.

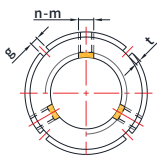
(Install)

The assembly of sak precision lock nut is very simple. Use hook spanner or plug-in spanner to tighten it with rated tightening torque. The necessary tightening torque depends on the necessary pre tightening. When pre tightening the nut body, first tighten the locking screw through the Allen wrench until it feels blocked. Then tighten the screws in turn again. See the product catalog for the maximum tightening torque of the locking screws.

(Disassemble)

When the nut without locking pin is removed, loosen the locking screw. Even if the locking screw with locking pin is loosened, the engagement between the locking pin and the shaft thread is not loosened. When the rubber hammer is used to tap the nut close to the locking screw, and the locking pin is loosened, the nut can be unscrewed. Since the locking pin made of phosphor bronze will not deform during tensioning, the nut can be used repeatedly after loosening.

## JX-SR JX-SR type radial precision lock nut

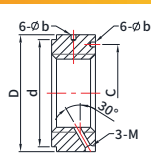
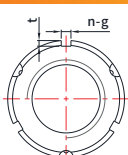


Size: M6-M300

Material: 42CrMo/forging  
Surface treatment: sandblasted and blackened  
Hardness: 28-32HRC  
Thread accuracy: ISO 4H precision turning  
Plane deflection: 0.002-0.005mm  
Screw grade: 12.9 grade  
Locking metal: phosphor bronze

The locking direction of the locking screw of JX-SR type radial lock nut is three-point radial lock, which is suitable for the situation that the design or assembly is limited and other products cannot be used. There are two kinds of hook spanner slots for the radial lock nut below M60: three slots and four slots. Please check them before purchase, and the general use will not be affected.

## JX-SF type precision lock nut with tooth Web



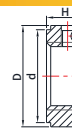
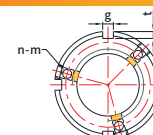
Size: M12-M300

Material: 42CrMo/forging  
Surface treatment: sandblasted and blackened  
Hardness: 28-32HRC  
Thread accuracy: ISO 4H precision turning  
Plane deflection: 0.002-0.005mm  
Screw grade: 12.9 grade  
Locking metal: phosphor bronze

The locking direction of the locking screw of JX-SF type lock nut is 30° with three-point locking of thread angle, which can make the thread on the locking pin completely fit on the thread, with excellent relaxation effect. The three equally spaced locking pins are not affected by the axial load acting on the nut. After locking, the axial load on the thread surface is unchanged, so the nut will not deform. The KMT nuts imported can also be replaced with this model, with the same use effect, price advantage, and procurement cost saving.

# JX HARDWARE NUTS FASTENERS SERIES

## JX-SA type axial precision lock nut

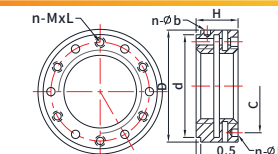


Material: 42CrMo/forging  
Surface treatment: sandblasted and blackened  
Hardness: 28-32HRC  
Thread accuracy: ISO 4H precision turning  
Plane deflection: 0.002-0.005mm  
Screw grade: 12.9 grade  
Locking metal: phosphor bronze

Size: M12-M300

The locking direction of the locking screw of JX-SA type axial precision lock nut is three-point axial locking, and the thickness and price are the same as that of F-type tooth web lock nut. It is applicable to the working condition where the design or assembly is limited and other products cannot be used.

## JX-SK type compact precision lock nut

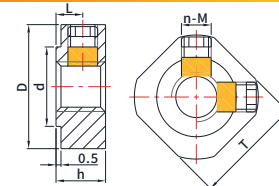


Material: 42CrMo/forging  
Surface treatment: sandblasted and blackened  
Hardness: 28-32HRC  
Thread accuracy: ISO 4H precision turning  
Plane deflection: 0.005mm  
Screw grade: 12.9 grade  
Locking metal: phosphor bronze

Size: M16-M300

JX-SK type compact precision lock nut this type of nut through the elastic deformation of its body, so that the thread surface closely adheres to the tapping thread, to achieve strong axial locking. It has excellent locking ability and is suitable for occasions with easy loosening, torque and poor working conditions. It is especially suitable for locking the main shaft bearing.

## JX-DN square lock nut

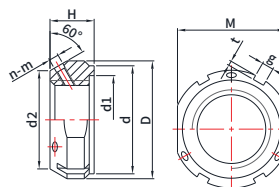


Size: M5-M40

Material: DIN C45  
Surface treatment: sandblasted and blackened  
Hardness: 28-32HRC  
Thread accuracy: ISO 4H precision turning  
Plane deflection: 0.002-0.005mm  
Screw grade: 12.9 grade  
Locking metal: phosphor bronze

The shape of JX-DN square lock nut is square, its fixing copper is fixed radially, the internal thread and the end face are processed simultaneously, which can ensure the accuracy of assembly. It can avoid the need of locking gasket and keyway. This square nut is mainly used for screw rod support seat.

## JX-SFA type precision lock nut



Size: M10-M420

Material: 42CrMo/forging  
Surface treatment: sandblasted and blackened  
Hardness: 28-32HRC  
Thread accuracy: ISO 4H precision turning  
Plane deflection: 0.002-0.005mm  
Screw grade: 12.9 grade  
Locking metal: phosphor bronze

M80-M200  
M80 The above specifications can be customized without cut surface phosphating

The locking mode of JX-SFA type close lock nut is thread 30° angle, three-point locking, four grooves are machined along the circumference, and two planes are machined, which can be clamped by general spanner. This design is mainly to meet the requirements of high precision, simple installation and stable locking.