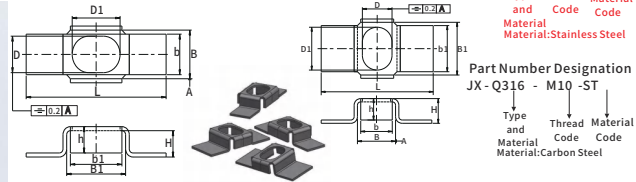


JX Automotive standard nut series

JX-Q316 A Type Square Nuts Box



Material: Carbon Steel, 65Mn, Stainless

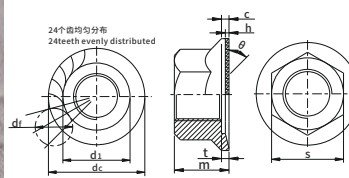
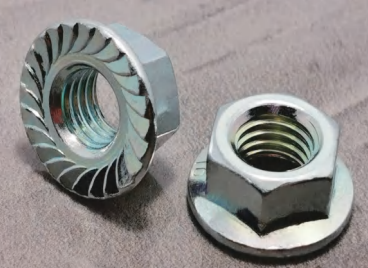
Standard: Q316

{ QC/T 859-2011 }
{ QC/T 862-2011 }

Unit:mm

SIZE	P/N		b		D		B		h	H		L		D1	b1	B1	
	Carbon Steel	Stainless steel	Max	Min	Max	Min	Max	Min		Max	Min	A Type	B Type			Max	Min
M4	JX-Q316-M4-ST	JX-Q316-M4-SS	6.5	6.15	5.85	8.45	7.55	3.5	4.48	4.00	34	30	10.0	10.5	13.05	11.95	
M5	JX-Q316-M5-ST	JX-Q316-M5-SS	7.5	7.18	6.82	9.45	8.55	4.5	5.48	5.00	34	30	11.5	12.0	14.55	13.45	
M6	JX-Q316-M6-ST	JX-Q316-M6-SS	10.0	9.18	8.82	12.55	11.45	5.5	6.48	6.00	38	34	13.0	14.0	16.55	15.45	
M8	JX-Q316-M8-ST	JX-Q316-M8-SS	13.0	11.22	10.78	15.55	14.45	6.5	7.58	7.00	43	38	16.0	18.0	20.65	19.35	
M10	JX-Q316-M10-ST	JX-Q316-M10-SS	16.0	13.22	12.78	18.55	17.45	8.5	9.58	9.00	43	38	19.0	22.0	24.65	23.35	
M12	JX-Q316-M12-ST	JX-Q316-M12-SS	19.0	15.22	14.78	21.65	20.35	10.5	11.70	11.00	49	42	21.0	25.0	27.65	26.35	

JX-Q324 Hexagonal Nuts With Serrated Flange



Material: Carbon Steel, Stainless

Carbon Steel Grade: 5, 8, 10, 12

Part Number Designation
JX - Q324 - M10 - SS

Type and Thread Material
Material: Stainless Steel

Part Number Designation
JX - Q324 - M10 - ST

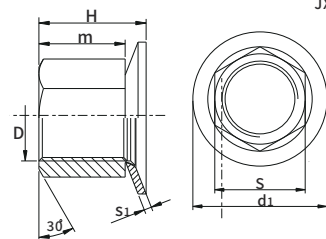
Type and Thread Material
Material: Carbon Steel

Standard: Q324
{ QC/T 864-2011 }

Unit:mm

规格 Size D	螺距 Pitch P	料号P/N		d ₁		t	d _r		h	θ(°)	S		C		K	
		碳钢 Steel	不锈钢 Stainless steel	min	max		min	max			min	max	min	max	min	max
M5	0.8	JX-Q324-M5-ST	JX-Q324-M5-SS	10	11	13.5	0.3	0.7	6	0.2	7	8	7.78	1	5.65	5.35
M6	1.0	JX-Q324-M6-ST	JX-Q324-M6-SS	10.5	11.5	14.5	0.3	0.9	6	0.3	6	10	9.78	1.1	6.15	5.85
M8	1.25	JX-Q324-M8-ST	JX-Q324-M8-SS	12.5	13.5	18	0.3	0.9	7	0.3	6	13	12.73	1.2	7.7	7.3
M10	1.5	JX-Q324-M10-ST	JX-Q324-M10-SS	14.5	15.5	20	0.4	1.2	8	0.3	5	15	14.73	1.5	9.2	8.8
M12	1.75	JX-Q324-M12-ST	JX-Q324-M12-SS	15.5	16.5	25	0.4	1.2	8	0.3	5	18	17.73	1.8	11.2	10.8

JX-Q322 Hex Nut and Conical Washer Assembly



Material: Carbon Steel, Stainless

Carbon Steel Grade: 6, 8, 10, 12

Standard: Q322
{ QC/T 607-1999 }

Part Number Designation
JX - Q322 - M6 - ST

Type and Thread Material
Material: Carbon Steel

Part Number Designation
JX - Q322 - M6 - SS

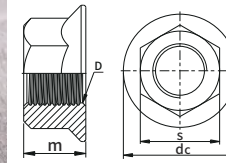
Type and Thread Material
Material: Stainless Steel

JX Automotive standard nut series

Size D	Pitch P	P/N		Nut				Washer		Assembly	
		Carbon Steel	Stainless steel	m		S		Type	d1	S1	H
				Max	Min	Max	Min				
M5	0.8	JX-Q322-M5-ST	JX-Q322S-M5-SS	5.1	4.8	8.0	7.78	Standard	12	0.9	6.5
								Enlarge	14	1.0	6.75
M6	1.0	JX-Q322-M6-ST	JX-Q322S-M6-SS	5.7	5.40	10.0	9.78	Standard	18	1.2	7.55
								Enlarge	14	1.4	7.85
M8	1.25	JX-Q322-M8-ST	JX-Q322S-M8-SS	7.5	7.14	13.0	12.73	Standard	22	1.6	9.85
								Enlarge	22	1.7	11.05
M10	1.5	JX-Q322-M10-ST	JX-Q322S-M10-SS	9.3	8.94	16.0	15.73	Standard	22	1.9	13.05
								Enlarge	22.5	2.5	16.35
M12	1.75	JX-Q322-M12-ST	JX-Q322S-M12-SS	12.0	11.57	18.0	17.73	Standard	22.5	2.5	16.35

Unit:mm

Hexagon nuts with flange, Fine pitch thread



Part Number Designation
JX - Q323 - M12 - SS

Type and Thread Material
Material: Stainless Steel

Material: Carbon Steel, Stainless
Carbon Steel Grade: 6, 8, 10, 12

Standard: Q323
GB/T 6177.2-2000

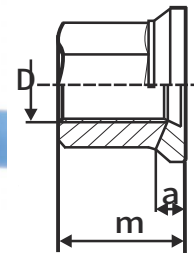
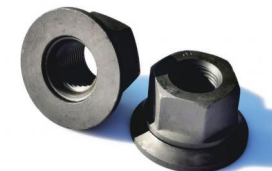
Part Number Designation
JX - Q323 - M12 - ST

Type and Thread Material
Material: Carbon Steel

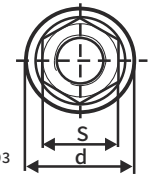
Unit:mm

Size	Pitch P	料号P/N		m		s		d _c max
		Carbon Steel	Stainless steel	Min	Max	Max	Min	
M8	1	JX-Q323-M8-ST	JX-Q323-M8-SS	7.64	8	13	12.73	17.9
M10	1.25	JX-Q323-M10-ST	JX-Q323-M10-SS	9.64	10	15	14.73	21.8
M12	1.25	JX-Q323-M12-ST	JX-Q323-M12-SS	11.57	12	18	17.73	26
M14	1.5	JX-Q323-M14-ST	JX-Q323-M14-SS	13.3	14	21	20.67	29.9
M16	1.5	JX-Q323-M16-ST	JX-Q323-M16-SS	15.3	16	24	23.67	34.5
M20	1.5	JX-Q323-M20-ST	JX-Q323-M20-SS	18.7	20	30	29.16	42.8

Wheel lock nuts



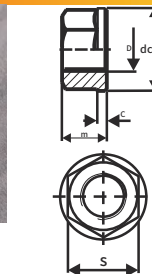
Standard: ISO7575-1993



Unit:mm

Size D	Pitch P	P/N	s	d	m	a
M18	1.5	JX-ISO7575-M18	27	39.5	27	6.0
M20	1.5	JX-ISO7575-M20	33	48	28	7.5
M22	1.5	JX-ISO7575-M22	33	48	30/33	8.0

Hex Flange Lock Nuts



Material: Carbon Steel, Stainless Steel
Carbon Steel Grade: 8, 10, 12

Size D	Pitch													
	M12	M14	M16	M18	M20	M22	M24	M27	M30	M33	M36	M39	M42	M48
1.75	2.0	2.0	2.5	2.5	2.5	3.0	3	3.5	3.5	4	4	4.5	5	
1.25	1.5	1.5	1.5	1.5	1.5	2.0	1.5	2.0	2.0	3	3	3.0	3	
S	18	21	24	27	30	34	36	41	46	50	55	60	65	75
d _c	23	25.5	29	33	36	41	43	49	55.5	59.5	65.5	72	77	88
C	2.1	3.0	3.4	4.2	4.2	5.3	5.3	6.4	7	7.5	8	8.5	10	
m	12	14	16	18	20	22	24	27	30	33	36	39	42	48

Unit:mm