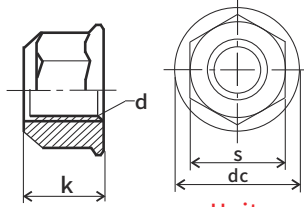


Automotive standard nuts series

Prevailing torque type all-metal hexagon nuts with flange

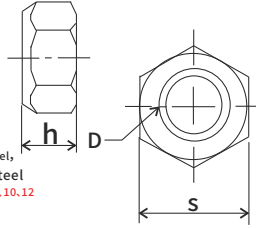
Material: Carbon Steel, Stainless steel
Standard: DIN6927-1983, GB6187, Q330, Q331
Carbon Steel Grade: 5, 8, 10, 12



Unit:mm

SIZE	Thread Code	P/N(A)		P/N(B)		dc		K		S	
		CarbonSteel	Stainless Steel	CarbonSteel	Stainless Steel	Max	Max	Min	Max	Min	
M5	0.8	JX-Q330M5-A-ST	JX-Q330M5-A-SS	JX-Q330M5-B-ST	JX-Q330M5-B-SS	11.8	6.2	5.7	8	7.78	
M6	1	JX-Q330M6-A-ST	JX-Q330M6-A-SS	JX-Q330M6-B-ST	JX-Q330M6-B-SS	14.2	7.3	6.8	10	9.78	
M8	1/1.25	JX-Q330M8-A-ST	JX-Q330M8-A-SS	JX-Q330M8-B-ST	JX-Q330M8-B-SS	17.9	9.4	8.74	13	12.73	
M10	1/1.25/1.5	JX-Q330M10-A-ST	JX-Q330M10-A-SS	JX-Q330M10-B-ST	JX-Q330M10-B-SS	21.8	11.4	10.34	15	14.73	
M12	1.25/1.5/1.75	JX-Q330M12-A-ST	JX-Q330M12-A-SS	JX-Q330M12-B-ST	JX-Q330M12-B-SS	26	13.8	12.57	18	17.73	
M14	1.5/2	JX-Q330M14-A-ST	JX-Q330M14-A-SS	JX-Q330M14-B-ST	JX-Q330M14-B-SS	29.9	15.9	14.8	21	20.67	
M16	1.5/2	JX-Q330M16-A-ST	JX-Q330M16-A-SS	JX-Q330M16-B-ST	JX-Q330M16-B-SS	34.5	18.3	17.2	24	23.67	
M20	1.5/2.5	JX-Q330M20-A-ST	JX-Q330M20-A-SS	JX-Q330M20-B-ST	JX-Q330M20-B-SS	42.8	22.4	20.3	30	29.16	

Prevailing torque type all-metal hexagon nuts

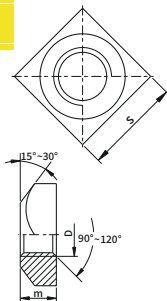


Material: Carbon Steel, stainless steel
Carbon Grade: 5, 6, 8, 10, 12
Standard: 1. DIN980-1987, 2. Q332, Q333, 3. GB6185-2000
Carbon Steel Grade: 5, 8, 10, 12

Unit:mm

SIZE	Thread Code	P/N		h		s		SIZE	P/N		h		s	
		Carbon Steel	Stainless Steel	Q & GB	Q & GB	Carbon Steel	Stainless Steel		DIN Standard	DIN Standard	Max	Min	Max	Min
M5	0.8	JX-Q332M5-ST	JX-Q332M5-SS	5.1	4.8	8	7.78	M5	JX-D980V-M5-ST	JX-D980V-M5-SS	5.1	4.8	8	7.78
M6	1	JX-Q332M6-ST	JX-Q332M6-SS	6	5.4	10	9.78	M6	JX-D980V-M6-ST	JX-D980V-M6-SS	6	5.7	10	9.78
M8	1/1.25	JX-Q332M8-ST	JX-Q332M8-SS	8	7.14	13	12.73	M8	JX-D980V-M8-ST	JX-D980V-M8-SS	8	7.5	13	12.73
M10	1/1.25/1.5	JX-Q332M10-ST	JX-Q332M10-SS	10	8.94	16	15.73	M10	JX-D980V-M10-ST	JX-D980V-M10-SS	10	9	17	16.73
M12	1.25/1.5/1.75	JX-Q332M12-ST	JX-Q332M12-SS	12	11.57	18	17.73	M12	JX-D980V-M12-ST	JX-D980V-M12-SS	12	11	19	18.67
M14	2	JX-Q332M14-ST	JX-Q332M14-SS	14.1	13.4	21	20.67	M14	JX-D980V-M14-ST	JX-D980V-M14-SS	14	12	22	21.67
M16	2	JX-Q332M16-ST	JX-Q332M16-SS	16.4	15.7	24	23.67	M16	JX-D980V-M16-ST	JX-D980V-M16-SS	16	14	24	23.67
M20	2.5	JX-Q332M20-ST	JX-Q332M20-SS	20.3	19	30	29.16	M20	JX-D980V-M20-ST	JX-D980V-M20-SS	20	18	30	29.16
M24	3	JX-Q332M24-ST	JX-Q332M24-SS	23.9	22.6	36	35	M24	JX-D980V-M24-ST	JX-D980V-M24-SS	24	22	36	35
M30	3.5	JX-Q332M30-ST	JX-Q332M30-SS	30	27.3	46	45	M30	JX-D980V-M30-ST	JX-D980V-M30-SS	30	28	46	45
M36	4	JX-Q332M36-ST	JX-Q332M36-SS	36	33.1	55	53.8	M36	JX-D980V-M36-ST	JX-D980V-M36-SS	36	34	55	53.8

JX-Q310B Square nuts



Part Number Designation
JX-Q310B - M10 - SS
Type and Material Code
Thread Code
Material: Stainless Steel

Part Number Designation
JX-Q310B - M10 - ST
Type and Material Code
Thread Code
Material: Carbon Steel

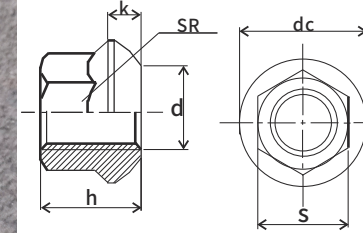
Standard: Q310B (GB/T 39-1988)
Grad: 5, 8

Unit:mm

Automotive standard nuts series

Size D	Pitch P	P/N		S		m	
		Carbon Steel	Stainless steel	Max	Min	Max	Min
M3	0.5	JX-Q310B-M3-ST	JX-Q310B-M3-SS	5.5	5.2	2.4	1.4
M4	0.7	JX-Q310B-M4-ST	JX-Q310B-M4-SS	7	6.64	3.2	2.8
M5	0.8	JX-Q310B-M5-ST	JX-Q310B-M5-SS	8	7.64	4	3.8
M6	1.0	JX-Q310B-M6-ST	JX-Q310B-M6-SS	10	9.64	5	5
M8	1.25	JX-Q310B-M8-ST	JX-Q310B-M8-SS	13	12.57	6.5	6.5
M10	1.5	JX-Q310B-M10-ST	JX-Q310B-M10-SS	16	15.57	8	8
M12	1.75	JX-Q310B-M12-ST	JX-Q310B-M12-SS	18	17.57	10	10

Flange spherical nuts

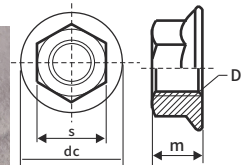
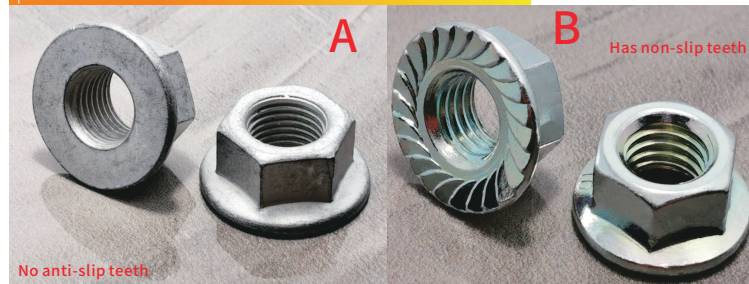


Material: Carbon Steel
Standard:
1. Q308, left thread Q309
2. DIN74361A-1982
3. JIS2701-1993
Grade: 8, 10
Carbon Steel Grade: 8, 10

Unit:mm

Size	P/N (Right Thread)	P/N (Left Thread)	S h13	dc		K	h	
			Tolerance	Max	Min	Max	Max	Min
M12X1.5	JX-Q308M12-18-R	JX-Q309M12-18-L	18	23	22.48	7.5	19	18
M12X1.5	JX-Q308M12-17-R	JX-Q309M12-17-L	17	23	22.48	7.5	19	18
M14x1.5	JX-Q308M14-21-R	JX-Q309M14-21-L	21	26	25.48	7.5	21	20
M14X1.5	JX-Q308M14-19-R	JX-Q309M14-19-L	19	26	25.48	7.5	21	20
M18X1.5	JX-Q308M14-24-R	JX-Q309M14-24-L	24	28	27.48	7.5	26	25
M20X1.5	JX-Q308M20-27-R	JX-Q309M20-27-L	27	33	32.48	9	28	27
M22X1.5	JX-Q308M22-30-R	JX-Q308M22-30-L	30	36	35.48	10.5	31	30

Hexagon nuts with flange



Material: Carbon Steel, Stainless Steel
Standard: Q320, DIN6923-1983
GB/T6177.1-2000
Carbon Steel Grade: 5, 6, 8, 10, 12

Unit:mm

SIZE	P	P/N		dc	m		s		1000PCS Weight (kg)
		Carbon Steel	Stainless steel		Max	Min	Max	Min	
M4	0.7	JX-Q320-M4-ST	JX-Q320-M4-SS	10.80	4.5	4.2	7.0	6.8	1.096
M5	0.8	JX-Q320-M5-ST	JX-Q320-M5-SS	11.8	5	4.7	8	7.78	1.42
M6	1.0	JX-Q320-M6-ST	JX-Q320-M6-SS	14.2	6	5.7	10	9.78	2.76
M8	1.0/1.25	JX-Q320-M8-ST	JX-Q320-M8-SS	17.9	8	7.6	13	12.73	6.0
M10	1.0/1.25/1.5	JX-Q320-M10-ST	JX-Q320-M10-SS	21.8	10	9.6	15	14.73	9.63
M12	1.25/1.5/1.75	JX-Q320-M12-ST	JX-Q320-M12-SS	26	12	11.6	18	17.73	16.66
M14	1.5/2	JX-Q320-M14-ST	JX-Q320-M14-SS	29.9	14	13.3	21	20.67	25.8
M16	1.5/2	JX-Q320-M16-ST	JX-Q320-M16-SS	34.5	16	15.3	24	23.67	38.64
M20	1.5/2.5	JX-Q320-M20-ST	JX-Q320-M20-SS	42.8	20	18.9	30	29.67	70.9