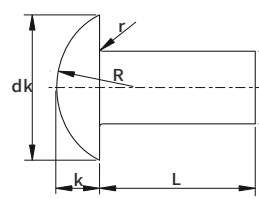


# RIVET FASTENERS SERIES

## JX-Q453 Flat round head rivets



Material: Carbon steel ML10, ML15, Stainless steel Aluminum, Brass

Standard: JX-Q453 (GB/T 871-1986)

Part Number Designation  
JX-Q453 - 2 - L - B  
Type and Material: Brass  
Size Code: 2  
Long Code: L  
Material Code: B

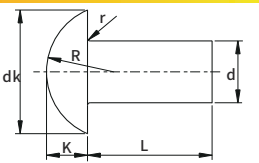
Part Number Designation  
JX-Q453 - 2 - L - Al  
Type and Material: Aluminum  
Size Code: 2  
Long Code: L  
Material Code: Al

Unit:mm

Nom	d			P/N			L Long	dk		K		R	r <sub>max</sub>
	Max	Min		Carbon Steel	Brass	Aluminum		Max	Min	Max	Min	≈	
2	2.06	1.94		JX-Q453-2-L-ST	JX-Q453-2-L-B	JX-Q453-2-L-Al	2 3 4 5 6 7 8 9 10 11 12 13	4.24	3.76	0.9	0.7	2.9	0.1
3	3.06	2.94		JX-Q453-3-L-ST	JX-Q453-3-L-B	JX-Q453-3-L-Al	4 5 6 7 8 9 10 11 12 13 14.....26 28 30	6.24	5.76	1.2	0.8	5	0.1
4	4.08	3.92		JX-Q453-4-L-ST	JX-Q453-4-L-B	JX-Q453-4-L-Al	5 6 7 8 9 10 11 12 13 14.....36 38 40	8.29	7.71	1.5	1.1	6.8	0.3
5	5.08	4.92		JX-Q453-5-L-ST	JX-Q453-5-L-B	JX-Q453-5-L-Al	6 7 8 9 10 11 12 13 14.....46 48 50	10.29	9.71	1.9	1.5	8.7	0.3
6	6.08	5.92		JX-Q453-6-L-ST	JX-Q453-6-L-B	JX-Q453-6-L-Al	7 8 9 10 11 12 13 14 15.....46 48 50	12.35	11.65	2.4	2	9.3	0.3
8	8.1	7.9		JX-Q453-8-L-ST	JX-Q453-8-L-B	JX-Q453-8-L-Al	9 10 11 12 13 14 15 16 17.....46 48 50	16.35	15.65	3.2	2.8	12.2	0.3
10	10.1	9.9		JX-Q453-10-L-ST	JX-Q453-10-L-B	JX-Q453-10-L-Al	10 11 12 13 14 15 16 17.....46 48 50	20.42	19.58	4.24	3.76	14.5	0.3

Remark:1.The length L can customize according to customer's need.

## JX-Q450 Dome head solid rivets



Material	Steel	10, 15, ML10, ML15
	Aluminum	2A01, 1035

Standard: Q450 (GB/T 867-1986)

Part Number Designation  
JX-Q450 - 2 - L - ST  
Type and Material: Carbon Steel  
Size Code: 2  
Long Code: L  
Material Code: ST

Part Number Designation  
JX-Q450 - 2 - L - Al  
Type and Material: Aluminum  
Size Code: 2  
Long Code: L  
Material Code: Al

Unit:mm

Nominal	d			P/N			L Long	dk		K		R	r <sub>max</sub>
	Max	Min		Carbon Steel	Stainless Steel	Aluminum		Max	Min	Max	Min	≈	
2	2.06	1.94		JX-Q450-2-L-ST	JX-Q450-2-L-SS	JX-Q450-2-L-Al	3 4 5 6 7 8 9 10 11 12 13 14 15 16	3.74	3.26	1.4	1	1.9	0.1
3	3.06	2.94		JX-Q450-3-L-ST	JX-Q450-3-L-SS	JX-Q450-3-L-Al	5 6 7 8 9 10 11 12 13 14 15 16.....24 26	5.54	5.06	2	1.6	2.9	0.1
4	4.08	3.92		JX-Q450-4-L-ST	JX-Q450-4-L-SS	JX-Q450-4-L-Al	7 8 9 10 11 12 13 14 15 16 17 18.....48 50	7.39	6.81	2.6	2.2	3.8	0.3
5	5.08	4.92		JX-Q450-5-L-ST	JX-Q450-5-L-SS	JX-Q450-5-L-Al	7 8 9 10 11 12 13 14 15 16 17 18.....52 55	9.09	8.51	3.2	2.8	4.7	0.3
6	6.08	5.92		JX-Q450-6-L-ST	JX-Q450-6-L-SS	JX-Q450-6-L-Al	8 9 10 11 12 13 14 15 16 17 18.....58 60	11.35	10.65	3.84	3.36	6	0.3
8	8.1	7.9		JX-Q450-8-L-ST	JX-Q450-8-L-SS	JX-Q450-8-L-Al	16 17 18 19 20 22 24 26.....62 65	14.35	13.65	5.04	4.56	8	0.3
10	10.1	9.9		JX-Q450-10-L-ST	JX-Q450-10-L-SS	JX-Q450-10-L-Al	16 17 18 19 20 22 24 26.....80 85	17.35	16.65	6.24	5.76	9	0.3
12	12.12	11.88		JX-Q450-12-L-ST	JX-Q450-12-L-SS	JX-Q450-12-L-Al	20 22 24 26 28 30 32 34.....85 90	21.42	20.58	8.29	7.71	11	0.4
(14)	14.12	13.88		JX-Q450-14-L-ST	JX-Q450-14-L-SS	JX-Q450-14-L-Al	22 24 26 28 30 32 34 36.....95 100	24.42	23.58	9.29	8.71	12.5	0.4
16	16.12	15.88		JX-Q450-16-L-ST	JX-Q450-16-L-SS	JX-Q450-16-L-Al	24 26 28 30 32 34 36.....100 110	29.42	28.58	10.29	9.71	15.5	0.4

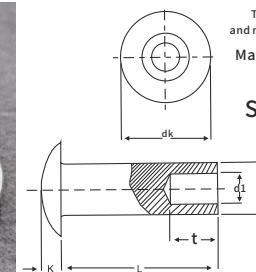
Remark:1.The length L can customize according to customer's need;  
2.Try to avoid the specifications of the brackets.

Material: Carbon steel ML10, ML15, Stainless steel Aluminum, Brass

Surface treatment: Color Zinc, ROHS Blue White Zinc, Black, yellow zinc, white zinc, H. D. G., Dake Luo, Zinc, Nickel, Bronze, Copper, Phosphate, Oxidation black, Tin, Gold, Chrome, Silver, Zinc-nickel alloy plated etc. Other material specifications and surface treatment can also be produced according to customer requirements

# RIVET FASTENERS SERIES

## JX-Q454 Flat head semi-hollow rivets



Part Number Designation  
JX-Q454-1.2- 2 - ST  
Type and material Code: 1.2  
Size Code: 2  
Long Code: L  
Material Code: ST  
Material: Carbon Steel

Part Number Designation  
JX-Q454-1.2- 2 - SS  
Type and material Code: 1.2  
Size Code: 2  
Long Code: L  
Material Code: SS  
Material: Stainless Steel

Standard: Q454

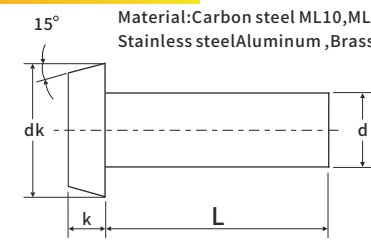
Part Number Designation  
JX-Q454-1.2- 2 - Al  
Type and material Code: 1.2  
Size Code: 2  
Long Code: L  
Material Code: Al  
Material: Aluminum

Material: Carbon steel ML10, ML15, Stainless steel Aluminum, Brass  
All dimensions are in millimeters

Unit:mm

Size d	P/N			L	d		dk		k		d1		t	
	Steel	Stainless steel	Aluminum		Max	Min	Max	Min	Max	Min	Max	Min	Max	Min
1.2	JX-Q454-1.2-L-ST	JX-Q454-1.2-L-SS	JX-Q454-1.2-L-Al	2 3 4 5 6 7 9 10 12	1.26	1.14	2.6	2.2	0.6	0.4	0.66	0.56	1.44	0.96
1.4	JX-Q454-1.4-L-ST	JX-Q454-1.4-L-SS	JX-Q454-1.4-L-Al	2 3 4 5 6 7 9 10 12	1.46	1.34	3.0	2.6	0.7	0.5	0.77	0.65	1.64	1.16
1.6	JX-Q454-1.6-L-ST	JX-Q454-1.6-L-SS	JX-Q454-1.6-L-Al	2 3 4 5 6 7 9 10 12	1.66	1.54	3.44	2.96	0.8	0.6	0.87	0.75	1.84	1.36
2	JX-Q454-2-L-ST	JX-Q454-2-L-SS	JX-Q454-2-L-Al	5 6 7 9 10 12 15 20	2.06	1.94	4.24	3.76	0.9	0.7	1.12	0.94	2.24	1.76
2.5	JX-Q454-2.5-L-ST	JX-Q454-2.5-L-SS	JX-Q454-2.5-L-Al	5 6 7 9 10 12 15 20	2.56	2.44	5.24	4.76	0.9	0.7	1.62	1.44	2.74	2.26
3	JX-Q454-3-L-ST	JX-Q454-3-L-SS	JX-Q454-3-L-Al	5 6 7 9 10 12 15 20	3.06	2.94	6.24	5.76	1.2	0.8	2.12	1.94	3.24	2.76
3.5	JX-Q454-3.5-L-ST	JX-Q454-3.5-L-SS	JX-Q454-3.5-L-Al	5 6 7 9 10 12 15 20	3.58	3.42	7.29	6.71	1.4	1.0	2.32	2.14	3.79	3.21
4	JX-Q454-4-L-ST	JX-Q454-4-L-SS	JX-Q454-4-L-Al	6 7 9 10 12 15 20 25	4.08	3.92	8.29	7.71	1.5	1.1	2.62	2.44	4.29	3.71
5	JX-Q454-5-L-ST	JX-Q454-5-L-SS	JX-Q454-5-L-Al	6 7 9 10 12 15 20 25	5.08	4.92	10.29	9.71	1.9	1.5	3.66	3.42	5.29	4.71
6	JX-Q454-6-L-ST	JX-Q454-6-L-SS	JX-Q454-6-L-Al	6 8 9 10 12 15 20 25	6.08	5.92	12.35	11.65	2.4	2.0	4.66	4.42	6.29	5.71
8	JX-Q454-8-L-ST	JX-Q454-8-L-SS	JX-Q454-8-L-Al	6 8 9 10 12 15 20 25	8.1	7.9	16.35	15.65	3.2	2.8	6.16	5.92	8.35	7.65
10	JX-Q454-10-L-ST	JX-Q454-10-L-SS	JX-Q454-10-L-Al	8 9 10 12 15 20 25 30	10.1	9.9	20.42	19.65	4.24	3.76	7.7	7.4	10.35	9.65

## JX-Q472 Flat Cone Rivets



Material: Carbon steel ML10, ML15, Stainless steel Aluminum, Brass

Part Number Designation  
JX-Q472 - 2 - 4 - ST  
Type and material Code: 2  
Size Code: 4  
Long Code: L  
Material Code: ST  
Material: Carbon Steel

Part Number Designation  
JX-Q472 - 2 - 2 - SS  
Type and material Code: 2  
Size Code: 2  
Long Code: L  
Material Code: SS  
Material: Stainless Steel

Unit:mm

Size d	P/N			L	d		dk		k	
	Steel	Stainless steel			Max	Min	Max	Min	Max	Min
2	JX-Q472-2-L-ST	JX-Q472-2-L-SS		2 4 6 8 10 12 14 16 18	2.06	1.94	3.84	3.35	1.2	0.8
2.5	JX-Q472-2.5-L-ST	JX-Q472-2.5-L-SS		2 4 6 8 10 12 14 16 18	2.56	2.44	4.74	4.26	1.5	1.1
3.0	JX-Q472-3-L-ST	JX-Q472-3-L-SS		4 6 8 10 12 14 16 18	3.06	2.94	5.64	5.16	1.7	1.3
3.5	JX-Q472-3.5-L-ST	JX-Q472-3.5-L-SS		4 6 8 10 12 14 16 18	3.58	3.42	6.59	6.10	2	1.6
4.0	JX-Q472-4-L-ST	JX-Q472-4-L-SS		8 10 12 14 16 18 24 28	4.08	3.92	7.49	6.91	2.2	1.8
5	JX-Q472-5-L-ST	JX-Q472-5-L-SS		6 8 10 12 14 16 18	5.08	4.92	9.29	8.71	2.7	2.3
6	JX-Q472-6-L-ST	JX-Q472-6-L-SS		8 10 12 14 16 18 20 25	6.08	5.92	11.15	10.45	3.2	2.8
8	JX-Q472-8-L-ST	JX-Q472-8-L-SS		8 10 12 14 16 18 20	8.1	7.9	14.75	14.05	4.24	3.76
10	JX-Q472-10-L-ST	JX-Q472-10-L-SS		10 12 14 16 18 20 25	10.1	9.9	18.35	17.65	5.24	4.76
12	JX-Q472-12-L-ST	JX-Q472-12-L-SS		12 14 16 18 20 25 30	12.12	11.88	20.42	19.58	6.24	5.76
14	JX-Q472-14-L-ST	JX-Q472-14-L-SS		12 14 16 18 20 25 30	14.12	13.88	24.42	23.58	7.29	6.71
16	JX-Q472-16-L-ST	JX-Q472-16-L-SS		10 12 14 16 18 20 25	16.12	15.88	28.42	27.58	8.29	7.71

Surface treatment: Color Zinc, ROHS Blue White Zinc, Black, yellow zinc, white zinc, H. D. G., Dake Luo, Zinc, Nickel, Bronze, Copper, Phosphate, Oxidation black, Tin, Gold, Chrome, Silver, Zinc-nickel alloy plated etc. Other material specifications and surface treatment can also be produced according to customer requirements