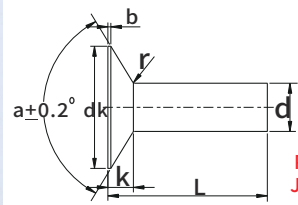
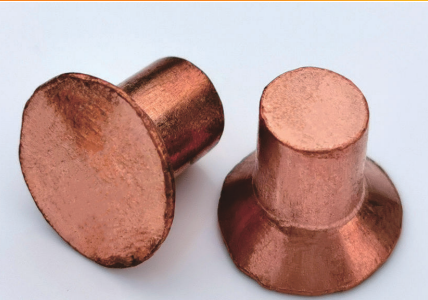


RIVET FASTENERS SERIES

JX-Q460 Countersunk head rivets



Material: Carbon steel, stainless steel, Aluminum, Brass

Standard: Q460
(GB/T 869-1986)

Part Number Designation
JX-Q460 - 2 - L - ST

Type and Code: 2
Material: Steel

Part Number Designation
JX-Q460 - 2 - L - Al

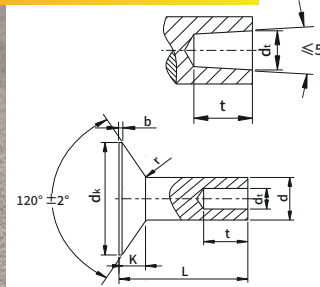
Type and Code: 2
Material: Aluminum

Unit: mm

d			P/N			L						dk			b _{max}	K	r _{max}						
Nom	Max	Min	Carbon Steel	Aluminum	Stainless Steel	Long						Max	Min	≈									
2	2.06	1.94	JX-Q460-2-L-ST	JX-Q460-2-L-Al	JX-Q460-2-L-SS	4	5	6	7	8	9	10	11	12	13	14	15	16	4.05	3.75	0.2	1	0.1
3	3.06	2.94	JX-Q460-3-L-ST	JX-Q460-3-L-Al	JX-Q460-3-L-SS	5	6	7	8	9	10	11	12	13	14	15	16	17	5.35	5.05	0.2	1.2	0.1
4	4.08	3.92	JX-Q460-4-L-ST	JX-Q460-4-L-Al	JX-Q460-4-L-SS	6	7	8	9	10	11	12	13	14	15	16	17	18	7.18	6.82	0.4	1.6	0.3
5	5.08	4.92	JX-Q460-5-L-ST	JX-Q460-5-L-Al	JX-Q460-5-L-SS	6	7	8	9	10	11	12	13	14	15	16	17	18	10.98	10.62	0.4	2	0.3
6	6.08	5.92	JX-Q460-6-L-ST	JX-Q460-6-L-Al	JX-Q460-6-L-SS	6	7	8	9	10	11	12	13	14	15	16	17	18	14.22	13.78	0.4	3.2	0.3
8	8.1	7.9	JX-Q460-8-L-ST	JX-Q460-8-L-Al	JX-Q460-8-L-SS	12	13	14	15	16	17	18	19	20	21	22	23	24	17.82	17.38	0.4	4	0.3
10	10.1	9.9	JX-Q460-10-L-ST	JX-Q460-10-L-Al	JX-Q460-10-L-SS	16	17	18	19	20	21	22	23	24	25	26	27	28					

Remark: 1. The length L can customize according to customer's need.

JX-Q464B 120° 120° Countersunk head semi-tublar rivets



Material: Carbon steel, stainless steel, Aluminum, Brass

Standard: Q464
(GB/T 874-1986)

Part Number Designation
JX-Q464 - 2 - L - ST

Type and Code: 2
Material: Carbon Steel

Part Number Designation
JX-Q464 - 2 - L - Al

Type and Code: 2
Material: Aluminum

Part Number Designation
JX-Q464 - 2 - L - B

Type and Code: 2
Material: Brass

Material	Steel	Aluminum	Brass
	10, 15, ML10, ML15	2A01, 1035	H62

Unit: mm

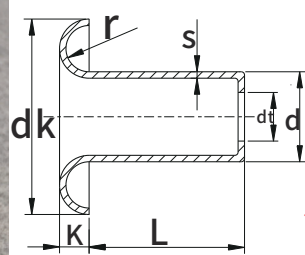
d			P/N			dk				t				d _t				b _{max}	K	r _{max}
Nominal	max	min	Steel	Stainless steel	Brass	max	min	max	min	max	min	max	min	max	min	max	min			
2	2.06	1.94	JX-Q464-2	JX-Q464A-2	JX-Q464B-2	4.75	4.45	2.24	1.76	1.12	0.94	1.12	0.94	0.2	0.8	0.1				
3	3.06	2.94	JX-Q464-3	JX-Q464A-3	JX-Q464B-3	6.28	5.92	3.24	2.76	2.12	1.94	2.12	1.94	0.2	1	0.1				
4	4.08	3.92	JX-Q464-4	JX-Q464A-4	JX-Q464B-4	7.98	7.62	4.29	3.71	2.62	2.44	2.52	2.34	0.4	1.2	0.3				
5	5.08	4.92	JX-Q464-5	JX-Q464A-5	JX-Q464B-5	9.68	9.32	5.29	4.71	3.66	3.42	3.46	3.22	0.4	1.4	0.3				
6	6.08	5.92	JX-Q464-6	JX-Q464A-6	JX-Q464B-6	11.72	11.28	6.29	5.71	4.66	4.42	4.16	3.92	0.4	1.7	0.3				
8	8.1	7.9	JX-Q464-8	JX-Q464A-8	JX-Q464B-8	15.82	15.38	8.35	7.65	6.16	5.92	4.66	4.42	0.4	2.3	0.3				

Remark: 1. The length L can customize according to customer's need.

We only list some specifications, but we can also produce other sizes according to customers' requirements

RIVET FASTENERS SERIES

JX-Q465 Hollow rivet



Material: Carbon steel, stainless steel, Aluminum, Brass

Standard: Q465
(GB/T 876-1986)

Part Number Designation
JX-Q465 - 2 - L - ST

Type and Code: 2
Material: Steel

Part Number Designation
JX-Q465 - 2 - L - Al

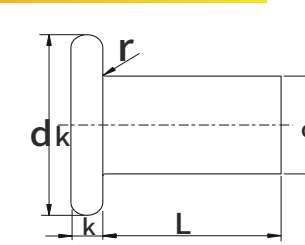
Type and Code: 2
Material: Aluminum

Unit: mm

d			P/N			L						d _t min	dk		K		S	r _{max}										
Nom	Max	Min	Brass	Aluminum	Stainless Steel	Long							Max	Min	Max	Min												
2	2.13	1.87	JX-Q465-2-L-B	JX-Q465-2-L-Al	JX-Q465-2-L-SS	2	3	4	5	6	7	8	9	10	11	12	13	14	15	1.2	3.5	3.2	0.6	0.4	0.25	0.25		
3	3.13	2.87	JX-Q465-3-L-B	JX-Q465-3-L-Al	JX-Q465-3-L-SS	2	3	4	5	6	7	8	9	10	11	12	13	14	15	2.34	5.67	8.9	10	4.7	0.7	0.5	0.3	0.25
4	4.15	3.85	JX-Q465-4-L-B	JX-Q465-4-L-Al	JX-Q465-4-L-SS	2	3	4	5	6	7	8	9	10	11	12	13	14	15	3.45	6.78	9.10	11	5.7	0.82	0.58	0.35	0.3
5	5.15	4.85	JX-Q465-5-L-B	JX-Q465-5-L-Al	JX-Q465-5-L-SS	2	3	4	5	6	7	8	9	10	11	12	13	14	15	3.45	6.78	9.10	11	7.64	1.12	0.88	0.35	0.5
6	6.15	5.85	JX-Q465-6-L-B	JX-Q465-6-L-Al	JX-Q465-6-L-SS	2	3	4	5	6	7	8	9	10	11	12	13	14	15	4.56	7.89	10.11	12	9.64	1.12	0.88	0.35	0.7

Remark: 1. The length L can customize according to customer's need.

JX-Q470 Flat head rivets



Material	Brass	H62, HPb59-1
	Aluminum	2A01

Standard: Q470
(GB/T 109-1986)

Part Number Designation
JX-Q470 - 2 - L - B

Type and Code: 2
Material: Brass

Part Number Designation
JX-Q470 - 2 - L - Al

Type and Code: 2
Material: Aluminum

Unit: mm

d			P/N			L						dk		K		r _{max}								
Nom	Max	Min	Brass	Aluminum	Long						Max	Min	Max	Min										
2	2.06	1.94	JX-Q470-2-L-B	JX-Q470-2-L-Al	4	5	6	7	8	9	10	11	12	13	14	15	16	17	18	4.24	3.76	1.2	0.8	0.1
2.5	2.56	2.44	JX-Q470-2.5-L-B	JX-Q470-2.5-L-Al	5	6	7	8	9	10	11	12	13	14	15	16	17	18	19	5.24	4.76	1.4	1	0.1
3	3.06	2.94	JX-Q470-3-L-B	JX-Q470-3-L-Al	6	7	8	9	10	11	12	13	14	15	16	17	18	19	20	6.24	5.76	1.6	1.2	0.1
4	4.08	3.92	JX-Q470-4-L-B	JX-Q470-4-L-Al	8	9	10	11	12	13	14	15	16	17	18	19	20	21	22	8.24	7.76	2	1.6	0.3
5	5.08	4.92	JX-Q470-5-L-B	JX-Q470-5-L-Al	10	11	12	13	14	15	16	17	18	19	20	21	22	23	24	10.24	9.76	2.2	1.8	0.3
6	6.08	5.92	JX-Q470-6-L-B	JX-Q470-6-L-Al	12	13	14	15	16	17	18	19	20	21	22	23	24	25	26	12.24	11.76	2.6	2.2	0.3
8	8.1	7.9	JX-Q470-8-L-ST	JX-Q470-8-L-Al	16	17	18	19	20	21	22	23	24	25	26	27	28	29	30	16.24	15.76	3	2.6	0.5
10	10.1	9.9	JX-Q470-10-L-ST	JX-Q470-10-L-Al	20	21	22	23	24	25	26	27	28	29	30	31	32	33	34	20.24	19.76	3.44	2.96	0.5

Remark: 1. The length L can customize according to customer's need.

We only list some specifications, but we can also produce other sizes according to customers' requirements