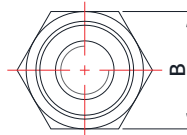
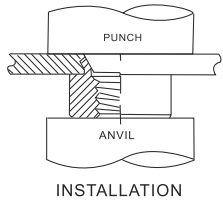
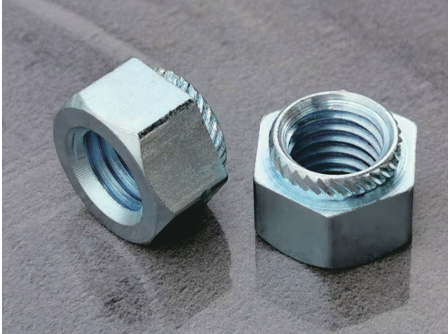


Fasteners for Metal Sheets and Panels Series

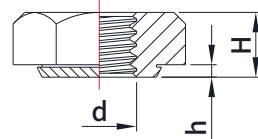
Carbon steel Incline Knurl Nut JX-NZF



Part Number Designation
JX-NZF-M2-1-ST

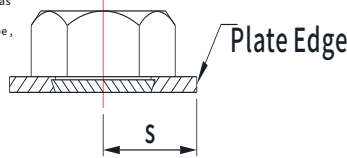
Type and Code: JX
 Thread Code: NZF
 Shank Code: M2
 Shank Code: 1
 Material Code: ST

Material: Carbon Steel



Material: Carbon Steel, Stainless Steel, Brass, Aluminum, Titanium

Surface treatment: ROHS zinc, nickel, zinc-nickel alloy, Chromium, dacromet, copper



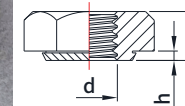
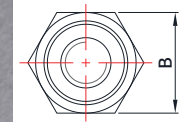
- Characteristics:**
- Application of thin sheet, install this nut on sheet with thickness of not less than 0.6 mm
 - Material that is difficult to joint with, and also on material such as aluminum, stainless steel and plastics
 - High installing strength, The part under head has its unique shape, when it is pressed in, sheets are fixed, and higher installation strength is obtained
 - Easy installation.
 - No need to special tooling, air pressure and hydraulic pressure would be enough for simple installation
 - The opposite side of nut is flat while the surface is not
 - Still can be used after surface treatment.

Unit:mm

Size	P/N	Hole Size	Shank Code	Min. Sheet Thickness	B	H	h	s	Installation Strength							
									Steel Board				Aluminum Board			
									Pressure KN	Rotating torque N.M	Air-rotating torque N.M	Pressing strength N	Pressure KN	Rotating torque N.M	Air-rotating torque N.M	Pressing strength N
M2*0.4	JX-NZF-M2-1-ST	4.5 ^{+0.01} ₋₀	1	1.0	5.5	3.0	0.9	4.5	3.9-6.9	0.49	2.5	345	2.5-3.4	0.49	1.2	295
M2.5*0.45	JX-NZF-M2.5-1-ST	4.5 ^{+0.01} ₋₀	1	1.0	5.5	3.0	0.9	4.5	3.9-6.9	0.69	2.5	345	2.5-3.4	0.69	1.2	295
M2.6*0.45	JX-NZF-M2.6-1-ST	4.5 ^{+0.01} ₋₀	1	1.0	5.5	3.0	0.9	4.5	3.9-6.9	0.78	2.5	345	2.5-3.4	0.78	1.2	295
M3*0.5	JX-NZF-M3-1-ST	4.5 ^{+0.01} ₋₀	1	0.6	6.0	2.6	0.5	4.5	3.9-6.9	3.9	1.5	165				
	JX-NZF-M3-2-ST	4.5 ^{+0.01} ₋₀	2	0.8	5.5	2.8	0.7	4.5	3.9-6.9	3.9	2.0	245	2.0-2.9	3.9	1.0	195
	JX-NZF-M3-3-ST	4.5 ^{+0.01} ₋₀	3	1.0	5.5	3.0	0.9	4.5	3.9-6.9	3.9	2.5	345	2.5-3.4	3.9	1.2	295
	JX-NZF-M3-4-ST	4.5 ^{+0.01} ₋₀	4	1.6	5.5	3.6	1.5	4.5	5.4-8.8	3.9	2.9	685	3.4-4.9	3.9	2.0	590
M4*0.7	JX-NZF-M4-1-ST	5.5 ^{+0.01} ₋₀	1	0.6	7.0	2.8	0.5	5.5	5.9-8.8	7.8	2.0	245				
	JX-NZF-M4-2-ST	5.5 ^{+0.01} ₋₀	2	0.8	7.0	3.0	0.7	5.5	5.9-8.8	7.8	2.5	265	2.9-4.9	7.8	1.2	245
	JX-NZF-M4-3-ST	5.5 ^{+0.01} ₋₀	3	1.0	7.0	3.2	0.9	5.5	5.9-8.8	7.8	2.9	490	3.9-5.9	7.8	2.0	345
	JX-NZF-M4-4-ST	5.5 ^{+0.01} ₋₀	4	1.6	7.0	3.8	1.5	5.5	7.8-11.8	7.8	4.9	785	5.4-7.8	7.8	2.5	685
M5*0.8	JX-NZF-M5-1-ST	6.5 ^{+0.01} ₋₀	1	1.0	8.0	4.0	0.9	6.5	7.8-10.8	14.7	6.9	590	4.9-7.4	11.3	2.9	440
	JX-NZF-M5-2-ST	6.5 ^{+0.01} ₋₀	2	1.6	8.0	4.6	1.5	6.5	8.8-12.7	14.7	5.9	885	5.9-8.8	12.7	3.4	785
M6*1.0	JX-NZF-M6-1-ST	8.0 ^{+0.01} ₋₀	1	1.0	10	5.0	0.9	6.5	8.8-12.7	24.5	8.8	590	5.9-9.8	24.5	3.9	490
	JX-NZF-M6-2-ST	8.0 ^{+0.01} ₋₀	2	1.6	10	5.6	1.5	8.0	9.8-14.7	24.5	19.6	980	6.9-10.8	24.5	5.9	885
M8*1.25	JX-NZF-M8-1-ST	10 ^{+0.12} ₋₀	1	2.0	13	6.5	1.9	10	11.8-16.7	49	19.6	1180	7.9-12.7	49	10.8	980
M10*1.5	JX-NZF-M10-1-ST	12.5 ^{+0.12} ₋₀	1	2.0	15	8.0	1.9	12.5	18.6-26.5	78.5	24.5	1270	9.8-15.7	73.6	13.7	1080
M12*1.75	JX-NZF-M12-1-ST	14.5 ^{+0.12} ₋₀	1	3.0	17	10	2.9	14.5	22.6-32.4	147	45.1	2650	14.7-22.5	137	19.6	1960
M16*2.0	JX-NZF-M16-1-ST	18.5 ^{+0.14} ₋₀	1	3.5	22	13	3.4	18.5	29.4-42.2	245	88.3	5400	16.7-24.5	245	63.8	2750
M20*2.5	JX-NZF-M20-1-ST	23.5 ^{+0.14} ₋₀	1	4.0	27	16	3.9	23	34.3-49	412	137	6870	19.6-29.4	412	78.5	3330

Fasteners for Metal Sheets and Panels Series

JX-NZFB Brass Incline Knurl Nut



Part Number Designation
JX-NZFB-M2-1-B

Type and Code: JX
 Thread Code: NZFB
 Shank Code: M2
 Shank Code: 1
 Material Code: B

Material: Carbon Steel, Stainless Steel, Brass, Aluminum, Titanium



INSTALLATION

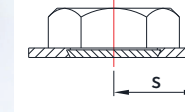
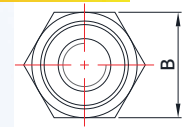
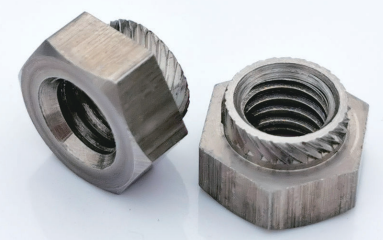
Surface treatment: ROHS zinc, nickel, zinc-nickel alloy, Chromium, dacromet, copper



Unit:mm

Size	P/N	Hole Size	Shank Code	Min. Sheet Thickness	B	H	h	s	Installation Strength			
									Aluminum Board			
									Pressure KN	Rotating Torque N.M	Air-rotating Torque N.M	Pressing Strength N
M3*0.5	JX-NZFB-M3-1-B	4.5 ^{+0.01} ₋₀	1	1.0	5.5	3.0	0.9	4.5	2.5-3.4	2.5	1.2	245
M4*0.7	JX-NZFB-M4-1-B	5.5 ^{+0.01} ₋₀	1	1.0	7.0	3.2	0.9	5.5	3.9-5.9	4.9	2.0	295
M5*0.8	JX-NZFB-M5-1-B	6.5 ^{+0.1} ₋₀	1	1.0	8.0	4.0	0.9	6.5	4.9-7.0	9.8	2.9	390

JX-NZFS Stainless steel Incline Knurl Nut



Part Number Designation
JX-NZFS-M2-1-SS

Type and Code: JX
 Thread Code: NZFS
 Shank Code: M2
 Shank Code: 1
 Material Code: SS

Material: Carbon Steel, Stainless Steel, Brass, Aluminum, Titanium

Surface treatment: ROHS zinc, nickel, zinc-nickel alloy, Chromium, dacromet, copper



Unit:mm

Size	Hole Size	P/N	Shank Code	Min. Sheet Thickness	B	H	h	s	Installation Strength			
									Aluminum Board			
									Pressure KN	Rotating Torque N.M	Air-rotating Torque N.M	Pressing Strength N
M2.6*0.45	4.5 ^{+0.01} ₋₀	JX-NZFS-M2.6-1-SS	1	1.0	5.5	3.0	0.9	4.5	2.5-3.4	0.78	1.2	295
M3*0.5	4.5 ^{+0.01} ₋₀	JX-NZFS-M3-1-SS	1	1.0	6.0	3.0	0.9	4.5	2.5-3.4	3.9	1.2	295
		JX-NZFS-M3-2-SS	2	1.6	5.5	3.6	1.5	4.5	3.4-4.9	3.9	2.0	590
M4*0.7	5.5 ^{+0.01} ₋₀	JX-NZFS-M4-1-SS	1	1.0	7.0	3.2	0.9	5.5	3.9-5.9	7.8	2.0	345
		JX-NZFS-M4-2-SS	2	1.6	7.0	3.8	1.5	5.5	5.4-7.9	7.8	2.5	685
M5*0.8	6.5 ^{+0.1} ₋₀	JX-NZFS-M5-1-SS	1	1.0	8.0	4.0	0.9	6.5	4.9-7.4	11.3	2.9	440
		JX-NZFS-M5-2-SS	2	1.6	8.0	4.6	1.5	6.5	5.9-8.8	12.7	2.9	785
M6*1.0	8.0 ^{+0.1} ₋₀	JX-NZFS-M6-1-SS	1	1.0	10	5.0	0.9	8.0	5.9-9.8	24.5	3.9	490
		JX-NZFS-M6-2-SS	2	1.6	10	5.6	1.5	8.0	6.9-10.5	24.5	5.9	885
M8*1.25	10 ^{+0.12} ₋₀	JX-NZFS-M8-1-SS	1	2.0	13	6.5	1.9	10.0	7.8-12.7	49	10.8	980

Remark: The material and treatment surface can also be manufactured according to customer requirements

http://www.juxinfasteners.com

http://www.juxinfasteners.com