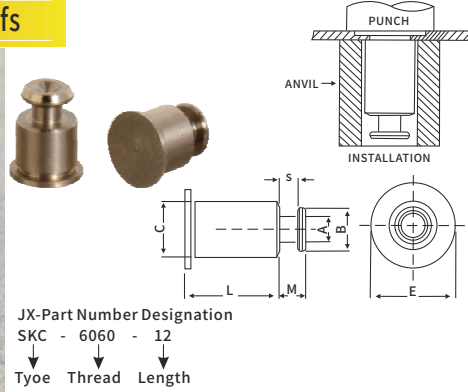


# JX Fasteners for Metal Sheets and Panels Series

## Panel to Panel, Flush Keyhole Standoffs

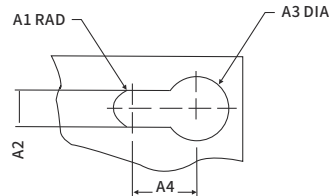
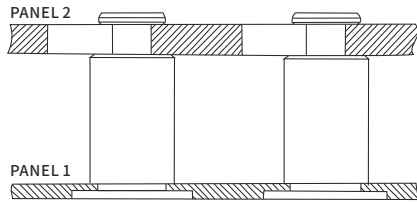


JX-Part Number Designation  
 SKC - 6060 - 12  
 Type Thread Length  
 Code Code Code  
 All dimensions are in inches

UNIFIED	Type	Body Size Sheet Code	Length 'L' ± .005 Length Code in 32nds of an inch										A	B	C	S	M	E
	Stainless Steel		.188	.250	.312	.375	.437	.500	.562	.656	.750	.875	1.00	± .003	± .003	Max.	± .003	Max.
JX-SKC	6060	6	8	10	12	14	16	18	20	24	28	32	.099	.117	.212	.068	.108	.250

All dimensions are in millimeters

METRIC	Type	Body Size Sheet Code	Length 'L' ± 0.13 Length Code in 32nds of an inch										A	B	C	S	M	E
	Stainless Steel		6	8	10	12	14	16	18	20	22	25	± 0.08	± 0.08	Max.	± 0.08	Max.	Nom
JX-SKC	61.5	6	8	10	12	14	16	18	20	22	25	2.5	4.5	5.38	1.72	2.75	6.35	



All dimensions are in inches

UNIFIED	PANEL 1			PANEL 2				Material	Thickness Range
	Type	Bottom Mounting Hole +.003	Thickness Min.	Top Mounting Hole					
JX-SKC		.213	.040	A Non.	A2 ± .003	A3 ± .003	A4 Min.	PC Board or Metal	.057-.064

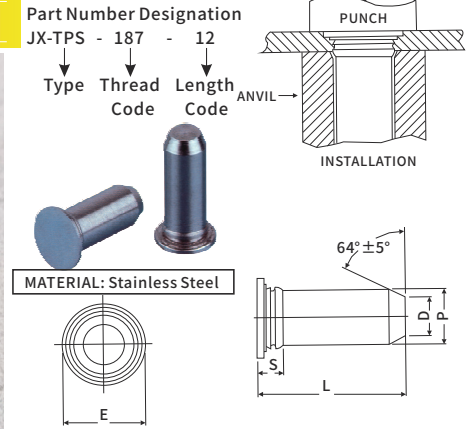
All dimensions are in millimeters

METRIC	PANEL 1			PANEL 2				Material	Thickness Range
	Type	Bottom Mounting Hole +0.08	Thickness Min.	Top Mounting Hole					
JX-SKC		5.4	1	A Non.	A2 ± 0.08	A3 ± 0.08	A4 Min.	PC Board or Metal	1.45-1.62

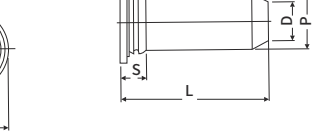
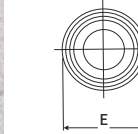
Remark: We only show part of the specifications, we can also produce various sizes according to the customer's requirements

# JX Fasteners for Metal Sheets and Panels Series

## Unthreaded Pins, Flush



MATERIAL: Stainless Steel



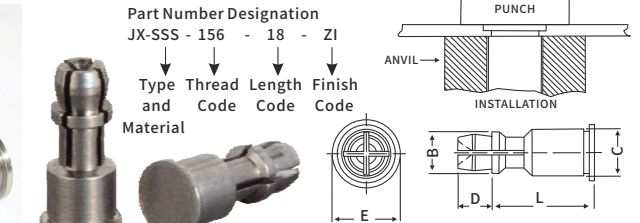
All dimensions are in inches

UNIFIED	Pin Diameter P ± .002	Type	Pin Diameter Code	Length 'L' ± .015 (Length in 16ths of an inch)				Min. Sheet Thickness	Hole Size In Sheet +.003	D ± .006	E ± .01	S Max.
	.125	JX-TPS	125	6	8	10	12	.040	.144	.090	.197	.090
.187	JX-TPS	187	6	8	10	12	16	.040	.205	.132	.276	.090
.250	JX-TPS	250	8	10	12	16	.040	.272	.177	.335	.090	

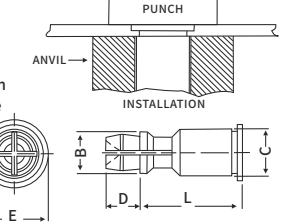
All dimensions are in millimeters

METRIC	Pin Diameter P ± 0.05	Type	Pin Diameter Code	Length Code 'L' ± 0.4 (Length Code in millimeters)				Min. Sheet Thickness	Hole Size In Sheet +0.08	D ± 0.15	E ± 0.25	S Max.
	3	JX-TPS	3mm	6	8	10	12	1	3.5	2.11	5	2.29
4	JX-TPS	4mm	8	10	12	16	1	4.5	2.82	6	2.29	
5	JX-TPS	5mm	10	12	16	20	1	5.5	3.53	7	2.29	
6	JX-TPS	6mm	12	16	20		1	6.5	4.24	8	2.29	

## SNAP-TOP STANDOFFS



Part Number Designation  
 JX-SSS - 156 - 18 - ZI  
 Type Thread Length Finish  
 Code Code Code Code  
 Material



All dimensions are in inches

UNIFIED	Type			Hole Code	Length 'L' ± .005 (Length Code in 32ths of an inch)								B	C Max.	D	E			
	Aluminum	Steel	Stainless Steel		156	8	10	12	14	16	18	20	24	28	32	.188	.212	.141	.250
JX-SSA	JX-SSS	JX-SSC																	

All dimensions are in millimeters

METRIC	Type			Hole Code	Length 'L' ± 0.13 (Length Code in millimeters)								B	C Max.	D	E			
	Aluminum	Steel	Stainless Steel		4mm	8	10	12	14	16	18	20	22	25	4.77	5.38	3.58	6.35	
JX-SSA	JX-SSS	JX-SSC																	

Remark: We only show part of the specifications, we can also produce various sizes according to the customer's requirements