

# JX Fasteners for Metal Sheets and Panels Series

## Captive Panel Screw-Tool only, Non-Flush, Spring-loaded

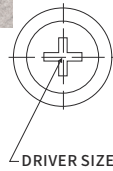
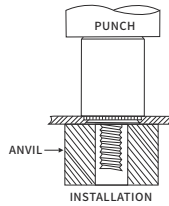


Part Number Designation

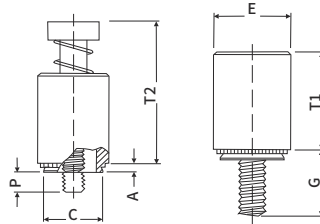
JX-PFC2P - M4 - 50 - CN

Type Thread Screw Finish  
Code Length Code Code

MATERIAL:Stainless Steel



DRIVER SIZE



All dimensions are in inches

Thread Size	Type	Thread Code	Screw Length Code	A Max.	Min. Sheet Thickness	Hole Size in Sheet +.003	C Max.	E ± 010	G			T1 Max.	T2 Nom.	Driver Size
									± 016	± 025	P			
.122-40 (#4-40)	JX-PFC2P	440	40	.060	.060	.265	.264	.315	.250	.000	.370	.540	#1	
			62						.375	.125				
			40						.250	.000				
.138-32 (#6-32)	JX-PFC2P	632	40	.060	.060	.281	.280	.354	.250	.000	.380	.540	#2	
			62						.375	.125				
			84						.500	.250				
.164-32 (#8-32)	JX-PFC2P	832	50	.060	.060	.312	.311	.375	.312	.000	.480	.705	#2	
			72						.437	.125				
			94						.562	.250				
.190-32 (#10-32)	JX-PFC2P	032	50	.060	.060	.344	.343	.394	.312	.000	.490	.705	#2	
			72						.437	.125				
			94						.562	.250				
.250-20 (1/4-20)	JX-PFC2P	0420	60	.060	.060	.413	.412	.472	.375	.000	.620	.905	#3	
			82						.500	.125				
			04						.625	.250				

All dimensions are in millimeters

Thread Size x Pitch	Type	Thread Code	Screw Length Code	A Max.	Min. Sheet Thickness	Hole Size in Sheet +.08	C Max.	E ±0.25	G			T1 Max.	T2 Nom.	Driver Size
									±0.40	±0.64	P			
M3x0.5	JX-PFC2P	M3	40	1.5	1.5	6.75	6.70	8.0	6.4	0	9.4	13.8	#1	
			62						9.5	3.2				
			50						7.9	0				
M4x0.7	JX-PFC2P	M4	72	1.5	1.5	7.95	7.90	9.5	11.1	3.2	12.2	17.8	#2	
			94						14.3	6.4				
			50						7.9	0				
M5x0.8	JX-PFC2P	M5	72	1.5	1.5	8.75	8.70	10.0	11.1	3.2	12.4	17.8	#2	
			94						14.3	6.4				
			60						9.5	0				
M6x1.0	JX-PFC2P	M6	82	1.5	1.5	10.5	10.46	12.0	12.7	3.2	15.7	23	#3	
			04						15.9	6.4				

Remark:We only show part of the specifications, we can also produce various sizes according to the customer's requirements

# JX Fasteners for Metal Sheets and Panels Series

## Screw Head, Spring-loaded Panel Fasteners Assemblies



Part Number Designation

JX-PFS2 - M4 - 20 - NC

Type Thread Screw Finish  
Code Length Code Code

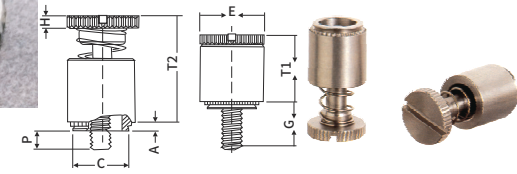
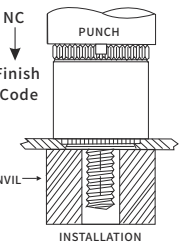
Material:Stainless Steel

Part Number Designation

JX-PFC2 - M4 - 20 - ZI

Type Thread Screw Finish  
Code Length Code Code

Material:Carbon Steel



All dimensions are in inches

Thread Size	Type		Thread Code	Screw Length Code	A Max.	Min. Sheet Thickness	Hole Size in Sheet +.003	C Max.	E ± 010	G			T1 Max.	T2 Nom.	H ± 005
	Steel	Stainless Steel								± 016	± 025	P			
.122-40 (#4-40)	JX-PFC2	JX-PFS2	440	40	.060	.060	.265	.264	.315	.250	.000	.36	.540	.072	
				62						.375	.125				
				40						.250	.000				
.138-32 (#6-32)	JX-PFC2	JX-PFS2	632	62	.060	.060	.281	.280	.354	.375	.125	.36	.540	.072	
				84						.500	.250				
				50						.312	.000				
.164-32 (#8-32)	JX-PFC2	JX-PFS2	832	72	.060	.060	.312	.311	.375	.437	.125	.45	.705	.082	
				94						.562	.250				
				50						.312	.000				
.190-32 (#10-32)	JX-PFC2	JX-PFS2	032	72	.060	.060	.344	.343	.394	.437	.125	.45	.705	.082	
				94						.562	.250				
				60						.375	.000				
.250-20 (1/4-20)	JX-PFC2	JX-PFS2	0420	82	.060	.060	.413	.412	.472	.500	.125	.58	.905	.098	
				04						.625	.250				

All dimensions are in millimeters

Thread Size x Pitch	Type		Thread Code	Screw Length Code	A Max.	Min. Sheet Thickness	Hole Size in Sheet +.08	C Max.	E ±0.25	G			T1 Max.	T2 Nom.	H ±0.13
	Steel	Stainless Steel								±0.40	±0.64	P			
M3x0.5	JX-PFC2	JX-PFS2	M3	40	1.5	1.5	6.75	6.70	8.0	6.4	0	9.1	13.8	1.83	
				62						9.5	3.2				
				50						7.9	0				
M4x0.7	JX-PFC2	JX-PFS2	M4	72	1.5	1.5	7.95	7.90	9.5	11.1	3.2	11.4	17.7	2.08	
				94						14.3	6.4				
				50						7.9	0				
M5x0.8	JX-PFC2	JX-PFS2	M5	72	1.5	1.5	8.75	8.70	10.0	11.1	3.2	11.4	17.7	2.08	
				94						14.3	6.4				
				60						9.5	0				
M6x1.0	JX-PFC2	JX-PFS2	M6	82	1.5	1.5	10.5	10.46	12.0	12.7	3.2	14.6	22.4	2.49	
				04						15.9	6.4				

Remark:We only show part of the specifications, we can also produce various sizes according to the customer's requirements