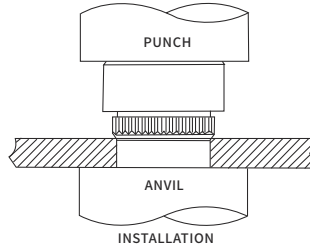
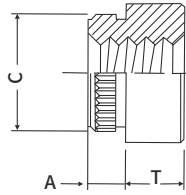


# JX Fasteners for Metal Sheets and Panels Series

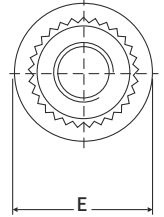
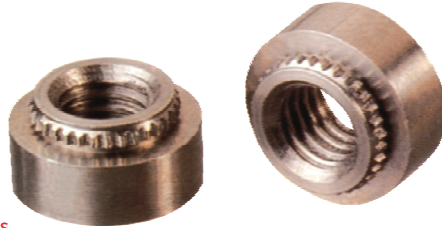
## BROACHING TYPE NUTS



Part Number Designation  
**JX-KFS2 - 832 - NC**  
 ↓ ↓ ↓  
 Type Thread Finish  
 and Code Code Code  
 Material:Stainless Steel



Part Number Designation  
**JX-KF2 - 832 - ZI**  
 ↓ ↓ ↓  
 Type Thread Finish  
 and Code Code Code  
 Material:Carbon Steel



All dimensions are in inches

	Thread Size	Type		Thread Code	A Max.	Min. Sheet Thickness	Hole Size in Sheet +.003	C ± .003	E ± .005	T ± .005
		Steel	Stainless Steel							
UNIFIED	.086-56 (#2-56)	JX-KF2	JX-KFS2	256	.060	.060	.147	.165	.217	.065
	.112-40 (#4-40)	JX-KF2	JX-KFS2	440	.060	.060	.166	.184	.217	.065
	.138-32 (#6-32)	JX-KF2	JX-KFS2	632	.060	.060	.213	.231	.215	.065
	.164-32 (#8-32)	JX-KF2	JX-KFS2	832	.060	.060	.250	.268	.354	.096
	.190-32 (#10-32)	JX-KF2	JX-KFS2	032	.060	.060	.272	.290	.375	.127

All dimensions are in millimeters

	Thread Size x Pitch	Type		Thread Code	A Max.	Min. Sheet Thickness	Hole Size in Sheet +0.08	C ±0.08	E ±0.13	T ±0.13
		Steel	Stainless Steel							
METRIC	M2x0.4	JX-KF2	JX-KFS2	M2	1.5	1.5	3.7	4.19	5.5	1.5
	M2.5x0.45	JX-KF2	JX-KFS2	M2.5	1.5	1.5	4.2	4.68	5.5	1.5
	M3x0.5	JX-KF2	JX-KFS2	M3	1.5	1.5	4.2	4.68	5.5	1.5
	M4x0.7	JX-KF2	JX-KFS2	M4	2	1.5	6.4	6.81	9	2
	M5x0.8	JX-KF2	JX-KFS2	M5	3	1.5	6.9	7.37	9.5	3

Remark: We only show part of the specifications, we can also produce various sizes according to the customer's requirements

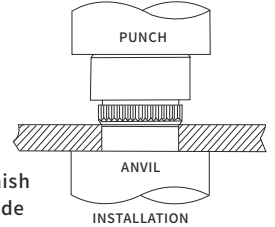
http://www.juxinfasteners.com

# JX Fasteners for Metal Sheets and Panels Series

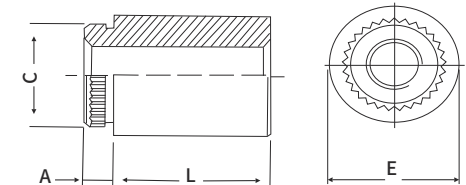
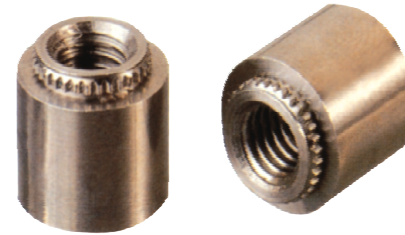
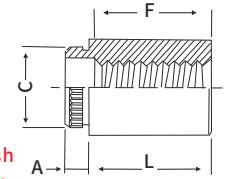
## BROACHING TYPE STANDOFFS



Part Number Designation  
**JX-KFE - 632 - 8 - ZI**  
 ↓ ↓ ↓ ↓  
 Type Thread Length Finish  
 and Code Code Code Code  
 Material:Carbon Steel



Part Number Designation  
**JX-KFES - 632 - 8 - NC**  
 ↓ ↓ ↓ ↓  
 Type Thread Length Finish  
 and Code Code Code Code  
 Material:Stainless Steel



All dimensions are in inches

	Thread Size	Thru Hole +.004 - .003	Type		Thread or Thru Hole Code	Length "L" +.002/- .005 (Length Code in 32nds of an Inch)	A Max.	Min. Sheet Thickness	Hole Size in Sheet +.003	C ± .003	E ± .005
			Steel	Stainless Steel							
UNIFIED	.112-40 (#4-40)	N/A	JX-KFE	JX-KFSE	440		.060	.060	.166	.184	.218
	.138-32 (#6-32)	N/A	JX-KFE	JX-KFSE	632	4 8 12 16 20	.060	.060	.213	.231	.275
	.166-4	.116	JX-KFE	JX-KFSE	116		.060	.060	.166	.184	.218
	.143-4	.143	JX-KFE	JX-KFSE	143		.060	.060	.213	.231	.275
	F Minimum Thread Length Full						.375 ± .15				

All dimensions are in millimeters

	Thread Size x Pitch	Thru Hole +0.10 - 0.08	Type		Thread or Thru Hole Code	Length "L" +0.05/- 0.13 (Length Code in millimeters)	A Max.	Min. Sheet Thickness	Hole Size in Sheet +0.08	C ±0.08	E ±0.13
			Steel	Stainless Steel							
METRIC	M3x0.5	N/A	JX-KFE	JX-KFSE	M3		1.5	1.5	4.2	4.68	5.5
	3.6-3ET	3.6	JX-KFE	JX-KFSE	3.6	3 4 6 8 10 12 14 16	1.5	1.5	5.4	5.87	7
	4.2-3ET	4.2	JX-KFE	JX-KFSE	4.2		1.5	1.5	6.4	6.81	9
	F Minimum Thread Length Full						9.5 ± 0.4				

Remark: We only show part of the specifications, we can also produce various sizes according to the customer's requirements

http://www.juxinfasteners.com