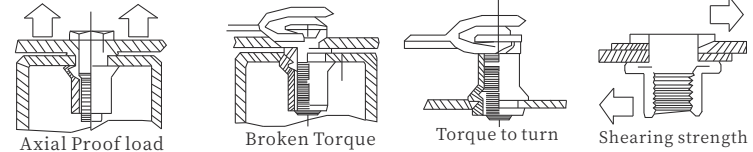


JX BLIND RIVET NUTS FASTENERS SERIES

Rivet Nut Technical Data Sheet

STANDARD BY:
GB/T17880.6-1999



Blind Rivet Nuts and Studs:
Fasteners for sheet metal and plastic, offering a simple solution even for single-sided installation. Blind rivet nuts and studs, our product portfolio. Need to install strong load-bearing threads in thin materials? A reliable rivet nut may be the answer. Available in round, hex, and square body styles, our rivet nuts feature a variety of options and locking features.

1. Axial Proof Load For Thread

Unit:N

Rivet Nut	Mechanical Char		Thread Size						
			M3	M4	M5	M6	M8	M10	M12
Flat and Countersunk and Round and HEX Head	Proof Load	Stainless steel And Steel	3900	6800	11500	16500	25000	32000	34000
		Aluminum	1900	4000	6600	7800	12300	17500	

2. Broken Torque

Unit:N.m

ThreadSize	M3	M4	M5	M6	M8	M10	M12
Steel/Inox Flat Head	2	5	8.5	15	26	50	80
Steel/Inox Countersunk Head	1	4	8	15	26	45	70
Steel/Inox Countersunk Head	1	3	6	11	20	32	50
Aluminum Flat and Countersunk Head	0.7	2.5	5	8	20	25	

3. Turning Torque For Clamping Force

Unit:N.m

ThreadSize	M3	M4	M5	M6	M8	M10	M12
Steel/Inox Flat Head	0.5	1	2.0	4.5	5.5	11	30
/Steel/Inox Countersunk Head	0.4	0.8	1.5	3.5	4.5	8.5	24
Aluminum Flat Head	0.25	0.9	1.5	3.5	5.0	6.5	21
Aluminum Countersunk Head	0.2	0.7	1.2	2.5	4.0	5	16

4. Shearing Strength

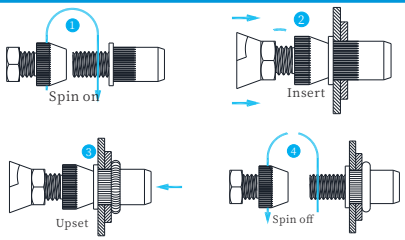
Unit:N

Rivet Nut	Mechanical Char		Thread Size						
			M3	M4	M5	M6	M8	M10	M12
Flat and Countersunk and Round and HEX Head	Shearing	Stainless Steel, Steel, Aluminum	900	1500	2000	3000	4400	5000	6500
			600	1000	1200	2000	2400	3800	

Material:1.Steel for c1008 2.Stainless steel for SUS304 3.Aluminum for almg2.5

Blind rivet studs Setting

Size	Material			
M5	Steel	8000N	6.0Nm	10.1mm
M6		11000N	10.0Nm	13.0mm
M8		21000N	24.0Nm	15.0mm

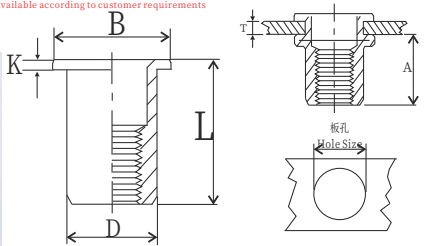
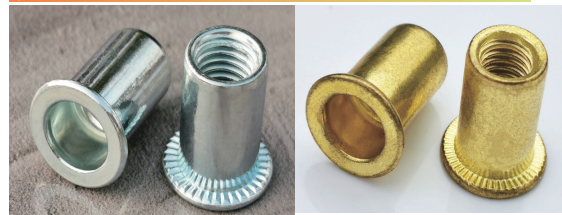


All the above technical data are for reference only, and our actual test report shall prevail.

JX BLIND RIVET NUTS FASTENERS SERIES

Falt Head Open Round body plain blind rivet nuts

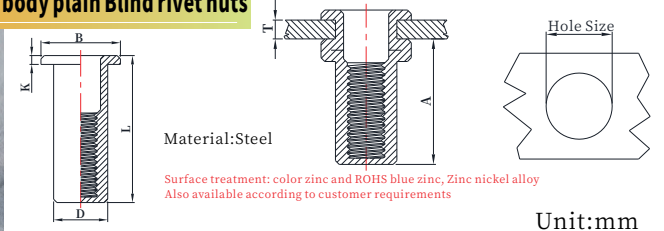
Surface treatment: color zinc and ROHS blue zinc, Zinc nickel alloy
Also available according to customer requirements



Material:Steel, Brass Unit:mm

SIZE D	Part No		(T) Grip Range	A Rer	Hole Size +0.1 0	D +0.07 -0.1	B ±0.2	k ±0.1	L
	Ste	Brass							
M3	JX-F-M3-8.5	JX-F-M3-8.5-Br	0.5-1.5	4.7	5.0	4.9	7.2	0.8	8.5
	JX-F-M3-9.5	JX-F-M3-9.5-Br	1.5-2.5	4.7	5.0	4.9	7.2	0.8	9.5
M4	JX-F-M4-10.5	JX-F-M4-10.5-Br	0.5-2.0	6.0	6.0	5.9	8.5	0.8	10.5
	JX-F-M4-12	JX-F-M4-12-Br	2.0-3.5	6.0	6.0	5.9	8.5	0.8	12.0
M5	JX-F-M5-13	JX-F-M5-13-Br	0.5-2.5	7.5	7.0	6.9	10.0	1.0	13.0
	JX-F-M5-17	JX-F-M5-17-Br	2.5-5.0	8.5	7.0	6.9	10.0	1.0	17.0
M6	JX-F-M6-15.5	JX-F-M6-15.5-Br	0.5-3.0	9.2	9.0	8.9	12.3	1.3	15.5
	JX-F-M6-18	JX-F-M6-18-Br	3.0-5.5	9.2	9.0	8.9	12.3	1.3	18.0
M8	JX-F-M8-18.5	JX-F-M8-18.5-Br	0.5-3.5	11.5	11.0	10.9	15.0	1.5	18.5
	JX-F-M8-21	JX-F-M8-21-Br	3.5-6.0	11.5	11.0	10.9	15.0	1.5	21.0
M10	JX-F-M10-17	JX-F-M10-17-Br	0.5-2.5	11.5	13.0	12.9	16.3	1.5	17.0
	JX-F-M10-21	JX-F-M10-21-Br	2.5-4.0	12.5	13.0	12.9	17.0	1.6	21.0
	JX-F-M10-24	JX-F-M10-24-Br	4.0-6.0	12.5	13.0	12.9	17.0	1.6	24.0
M12	JX-F-M12-22	JX-F-M12-22-Br	1.0-3.5	11	12.0	11.9	16.0	1.6	19.0
	JX-F-M12-25	JX-F-M12-25-Br	1.0-4.0	13.5	15.0	14.9	18.0	1.7	22.0
M14	JX-F-M14-32.3	JX-F-M14-32.3-Br	1.5-3.0	21.8	18	17.9	24	2.5	32.3
	JX-F-M14-33.9	JX-F-M14-33.9-Br	3.0-4.5	21.8	18	17.9	24	2.5	33.9

Flat Head Closed end Round body plain Blind rivet nuts



Material:Steel

Surface treatment: color zinc and ROHS blue zinc, Zinc nickel alloy
Also available according to customer requirements

Unit:mm

Size	Part No	(T) Grip Range	A Rer	Hole Size +0.1 0	D +0.1 -0.1	B ±0.2	K ±0.1	L ±0.2
M3	JX-BF-M3-13.3	0.5-1.5	10	5.0	4.9	7.2	0.8	13.3
M4	JX-BF-M4-16	0.5-2.0	11.3	6.0	5.9	9.0	0.8	16.0
	JX-BF-M4-18	2.0-4.0	11.3	6.0	5.9	9.0	0.8	18.0
M5	JX-BF-M5-17	0.5-2.5	11.5	7.0	6.9	10.0	1.0	17.0
	JX-BF-M5-19	2.5-5.0	11.5	7.0	6.9	10.0	1.0	19.0
M6	JX-BF-M6-19.2	0.5-3.0	12.7	9.0	8.9	12.3	1.3	19.2
	JX-BF-M6-21	3.0-5.5	12.7	9.0	8.9	12.3	1.3	21.0
M8	JX-BF-M8-21.5	0.5-3.0	14.8	11.0	10.9	15.0	1.5	21.5
	JX-BF-M8-24	3.0-5.5	14.8	11.0	10.9	15.0	1.5	24.0
M10	JX-BF-M10-27	1.0-4.0	19.2	13.0	12.9	17.0	1.6	27.0

http://www.jxfastener.cn

http://www.jxfastener.cn